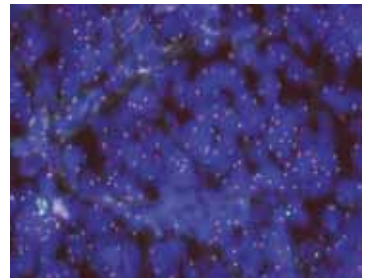
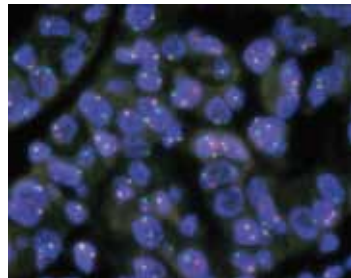
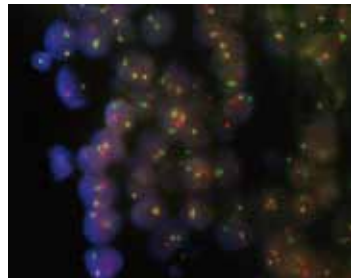
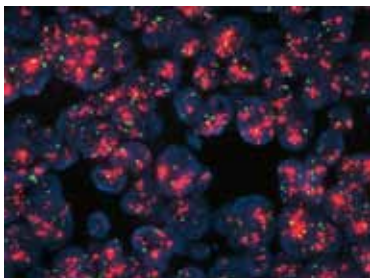
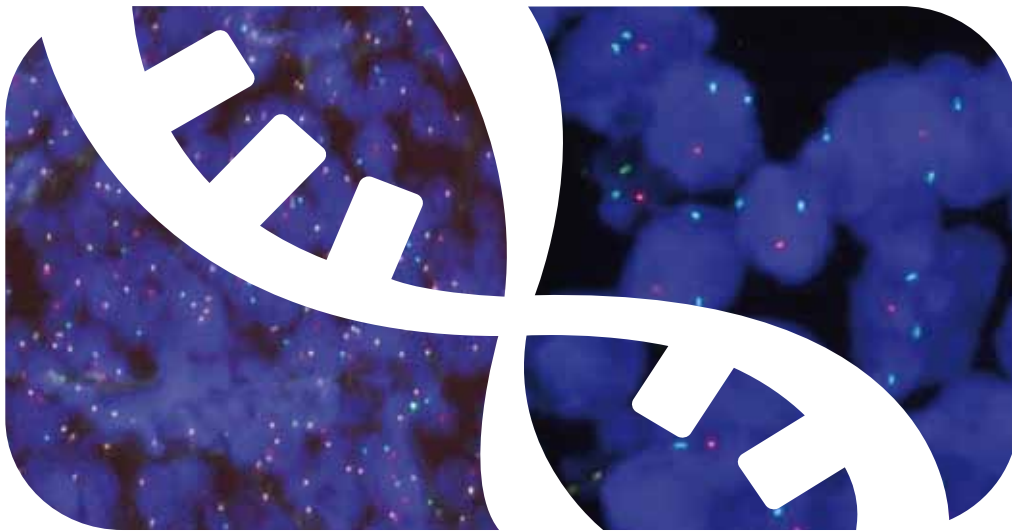




- FISH SOLUTIONS -



VITRO OFFERS



HIGH QUALITY FISH
PROBES AND AUXILIARY
REAGENTS FOR THE BEST
RESULT



WHOLE PORTFOLIO
CE-IVD LABELLED



SHIPMENT AND
STORAGE AT 4°C



READY
TO USE

MANUAL FISH PROBES FOR SOLID TUMORS

REFERENCE	DESCRIPTION	TEST
MAD-001M	HER2/CEN17 FISH Probe	10 test
MAD-002M	ALK Break Apart FISH Probe	10 test
MAD-003M	ROS1 Break Apart FISH Probe	10 test
MAD-004M	CCND1 Break Apart FISH Probe	10 test
MAD-005M	BCL2 Break Apart FISH Probe	10 test
MAD-006M	BCL6 Break Apart FISH Probe	10 test
MAD-007M	IGH Break Apart FISH Probe	10 test
MAD-008M	MYC Break Apart FISH Probe	10 test
MAD-009M	MET/CEN7 FISH Probe	10 test
MAD-010M	MDM2/CEN12 FISH Probe	10 test
MAD-011M	MALT1 Break Apart FISH Probe	10 test
MAD-012M	FUS Break Apart FISH Probe	10 test
MAD-013M	EWSR1 Break Apart FISH Probe	10 test
MAD-014M	SS18 Break Apart FISH Probe	10 test
MAD-015M	FOXO1 Break Apart FISH Probe	10 test
MAD-016M	TFE3 Break Apart FISH Probe	10 test
MAD-017M	DDIT3(CHOP) Break Apart FISH Probe	10 test
MAD-018M	1p36/1q25 FISH Probe	10 test
MAD-019M	19q13/19p13 FISH Probe	10 test

MANUAL FISH PROBES FOR ONCOHEMATOLOGY

REFERENCE	DESCRIPTION	TEST
MAD-040M	ATM/GLI1 FISH Probe	10 test
MAD-041M	BCL6 Break Apart FISH Probe	10 test
MAD-042M	BCR-ABL1 Fusion/Translocation FISH Probe	10 test
MAD-043M	CBFB Break Apart FISH Probe	10 test
MAD-044M	CDKN2A/CCP9 FISH Probe	10 test
MAD-045M	CSF1R/EGR1 FISH Probe	10 test
MAD-046M	CUX1/VIPR2/CCP7 FISH Probe	10 test
MAD-047M	DLEU1/TP53 FISH Probe	10 test
MAD-048M	DLEU1/ZBTB16 FISH Probe	10 test
MAD-049M	IGH Break Apart FISH Probe	10 test
MAD-050M	IGH-BCL2 Fusion/Translocation FISH Probe	10 test
MAD-051M	IGH-CCND1 Fusion/Translocation FISH Probe	10 test
MAD-053M	IGH-MAF Fusion/Translocation FISH probe	10 test
MAD-054M	IGH-MYC Fusion/Translocation FISH Probe	10 test
MAD-055M	IGH-MYEOV Fusion/ Translocation FISH Probe	10 test
MAD-056M	IRF4/DUSP22 Break Apart FISH Probe	10 test
MAD-057M	JAK2 Break Apart FISH Probe	10 test
MAD-058M	KMT2A Break Apart FISH Probe	10 test
MAD-059M	MALT1 Break Apart FISH Probe	10 test
MAD-060M	MECOM Break Apart FISH Probe	10 test
MAD-061M	MYC/CCP8 FISH Probe	10 test
MAD-062M	PTPRT/CCP20 FISH Probe	10 test
MAD-063M	RUNX1-RUNX1T1 Fusion/Translocation FISH Probe (AML1-ETO)	10 test
MAD-064M	S100A10/PNOC FISH Probe	10 test
MAD-065M	SEC63/CCP6 FISH Probe	10 test
MAD-066M	SEC63/SMAD6 FISH Probe	10 test
MAD-067M	TP53/ATM FISH Probe	10 test
MAD-068M	TP53/CCP17 FISH Probe	10 test
MAD-069M	TP53/CD37 FISH Probe	10 test

AUTOMATED FISH PROBES FOR MD-STAINER

REFERENCE	DESCRIPTION	TEST
MAD-001FA	HER2/CEN17 FISH Probe	24 test
MAD-002FA	ALK Break Apart FISH Probe	10 test
MAD-003FA	ROS1 Break Apart FISH Probe	10 test
MAD-004FA	CCND1 Break Apart FISH Probe	10 test
MAD-005FA	BCL2 Break Apart FISH Probe	10 test
MAD-006FA	BCL6 Break Apart FISH Probe	10 test
MAD-007FA	IGH Break Apart FISH Probe	10 test
MAD-008FA	MYC Break Apart FISH Probe	10 test
MAD-009FA	MET/CEN7 FISH Probe	10 test
MAD-010FA	MDM2/CEN12 FISH Probe	10 test
MAD-011FA	MALT1 Break Apart FISH Probe	10 test
MAD-012FA	FUS Break Apart FISH Probe	10 test
MAD-013FA	EWSR1 Break Apart FISH Probe	10 test
MAD-014FA	SS18 Break Apart FISH Probe	10 test
MAD-015FA	FOXO1 Break Apart FISH Probe	10 test
MAD-016FA	TFE3 Break Apart FISH Probe	10 test
MAD-017FA	DDIT3 (CHOP) Break Apart FISH Probe	10 test
MAD-018FA	1p36/1q25 FISH Probe	10 test
MAD-019FA	19q13/19p13 FISH Probe	10 test

AUXILIARY REAGENTS

REFERENCE	DESCRIPTION	SIZE
MAD-FISH-PKT	Manual FISH Pretreatment Kit *	40 test
MAD-FISH-MDS	MD- Stainer FISH Pretreatment Kit *	48 test
MAD-004077R1	Wash Buffer concentrated 10X **	500 ml
MAD-FS0106	Fluorescent Contrast Agent- DAPI + AntiFade	400 µl
MAD-FS0106-1	Fluorescent Contrast Agent- DAPI + AntiFade	800 µl
MAD-011530Q-50	Rubber Cement Fixogum	50 gr
MAD-011530Q-125	Rubber Cement Fixogum	125 gr

* For paraffin embedded tissue sections ** For liquid cell suspensions

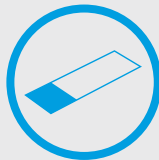
CONSUMABLES

REFERENCE	DESCRIPTION	SIZE
MAD-15-188-55/100	IHC Treated Slides	100 units

MD STAINER AUTOMATED PLATFORM



FULLY AUTOMATED
PROTOCOLS WHICH
ALLOW OVERNIGHT
PROCESSING (IHC, FISH, CISH)



36 DETERMINATIONS
IN INDEPENDENT AND
MOTORIZED INCUBATION
CHAMBERS



POSSIBILITY OF
COMBINING IHC AND FISH
IN THE SAME
WORKFLOW



SEMI-CONTINUED
LOAD



MINIMAL
RESIDUAL
GENERATION



SEPARATION OF
DANGEROUS AND
NON-DANGEROUS
REAGENTS



INCREASE
LABORATORY
PRODUCTIVITY



REDUCE HUMAN
ERRORS



www.vitro.bio



C/ Luis Fuentes Bejarano 60 Ed.
Nudo Norte (local3) 41020 Sevilla



Teléfono: +34 954 93 32 00



sales@vitro.bio



www.vitro.bio