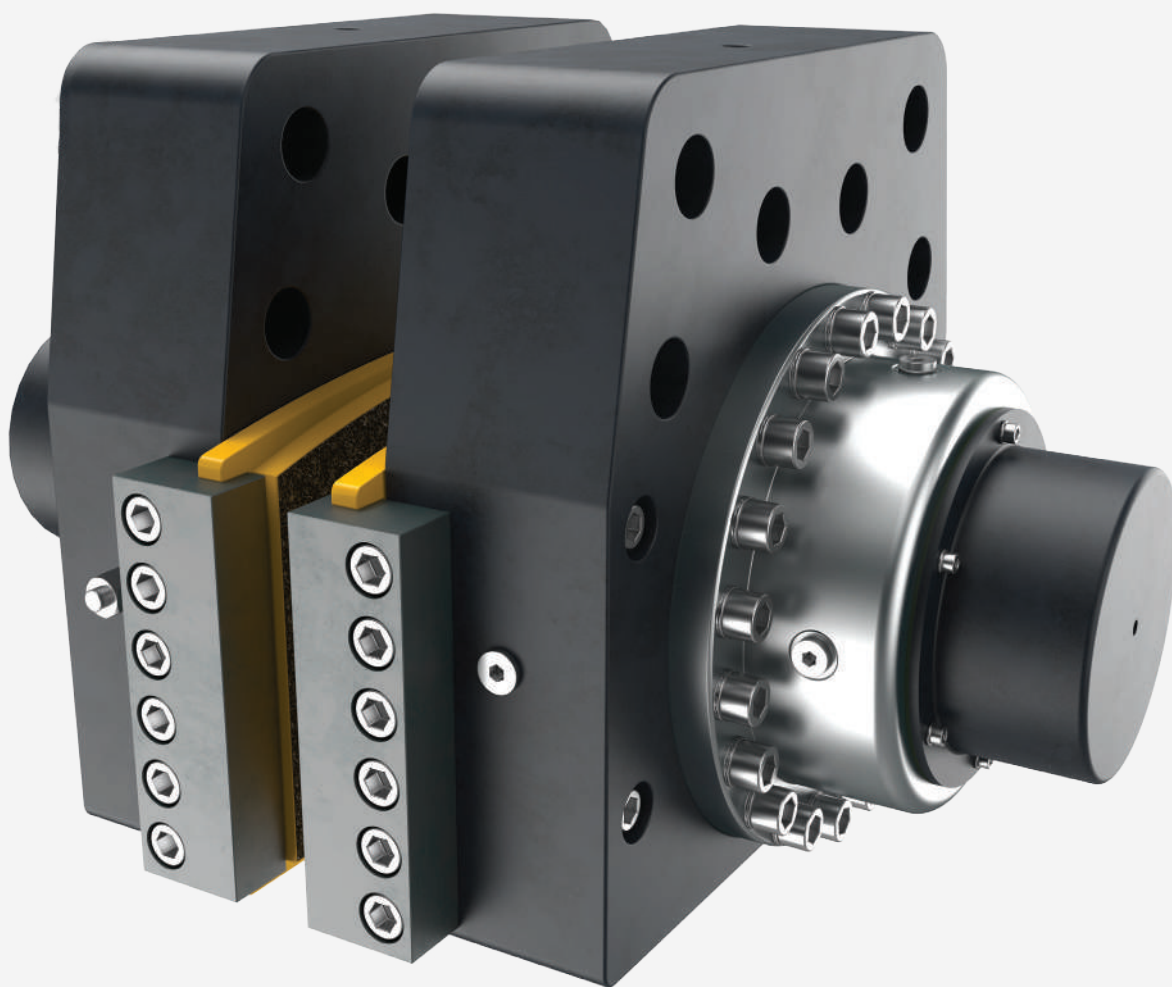


Hydraulic Caliper & Direct Brakes



Quality and Safety in Industrial Brakes

Coremo Ocmea draws on its long tradition in the manufacture of brakes and clutches for industrial applications, to look firmly to the future, to the realisation of services with a high degree of customisation: structured projects including products, technical support, maintenance and consulting.

Coremo's strong points have always lain in its precise, tailor-made design, constant product innovation and quality of components.



Our Product Range

- . **Pneumatic Caliper Brakes**
- . **Hydraulic Caliper & Direct Brakes**
- . **Manual Caliper Brakes**
- . **Small Pneumatic Brakes & Clutches**
- . **Double Ventilated Brakes**
- . **Fan Cooled Brakes**
- . **Water Cooled Brakes & Clutches**
- . **Air Tube Multidisc Brakes & Clutches**
- . **Optional Equipment:
Discs, Hydraulic Power Packs, etc.**

Coremo's products are designed to work with original Coremo replacement parts.

Support

Coremo's support is increasingly becoming a highly specialised integrated service, offering not only guidance on selection of the braking system but also consulting, maintenance, analysis and reporting. Coremo's aim is to deliver a complete service: starting from the information the customer provides to obtain a detailed picture of requirements, Coremo supplies the braking system best suited to individual needs.

Supply Chain Services

A large network of Agents and Distributors and an internal sales support allow us to reach the customer's needs. Coremo offers a flexible service worldwide, including quick reaction, safety stock, short delivery terms and customized labeling.

After Sales Support

Any help, question or special need after buying our products, are welcome and held in high consideration. Coremo provides technical support, dedicated training, spare parts availability and product reconditioning.

Design and Manufacturing

Coremo's strategy has always been based on the generation of customers loyalty, pursued through product reliability and rugged construction, ease of use and maintenance of brakes and clutches, not to mention durability, competitive pricing and prompt delivery.

Hydraulic Caliper & Direct Brakes

CALIPER BRAKES

Oil and Spring Actuated Brakes

Braking Force Range

from 6,8kN to 40kN

Working temperature

from -10°C to +100°C

Mineral based oils

SAE/ISO 46



Features & Optional Products

- . Wear Compensation
- . Inclined Mounting Kit
- . Pads Self Alignment
- . Wear Indicator
- . Double Pads
- . On-Off Indicator
- . Safety Screw
- . Multi-Springs Powered Thruster
- . Wide Range of Friction Materials
- . Wide Range of Thrusters

DIRECT BRAKES

Oil and Spring Actuated Brakes

Braking Force Range

from 8kN to 300kN

Working temperature

from -10°C to +100°C

Mineral based oils

SAE/ISO 46



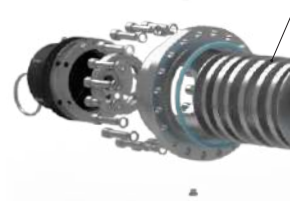
Features & Optional Products

- . Solid Steel Body
- . Wear Compensation
- . Wear Indicator
- . Inductive On-Off Sensor
- . Return Springs
- . Wide Range of Friction Materials
- . Safety Hook

FULL
Offshore
Protection

Special treatments and paintings are available in order to meet specific customer standards or any environmental condition. On off-shore applications our brakes are supplied with C5-M corrosion protection class in order to reduce maintenance and lifecycle costs.

Special attention is paid to the selection and combination of different class materials and their treatments in order to minimize the electrolytic effect, which can produce unexpected oxidation while working in salt-water environment.



Stain
guide
latera
the s

Other Products Discs



In its prod
Coremo ca
cast iron h
as well as
discs, with
hub. Such
available in
version or
in dimensi
machining

. Solid Steel Body

. Stainless Steel Thruster

. Stainless Steel Regulator

. Stainless Steel Guides
for the Lining Pads

. Stainless Steel Cover

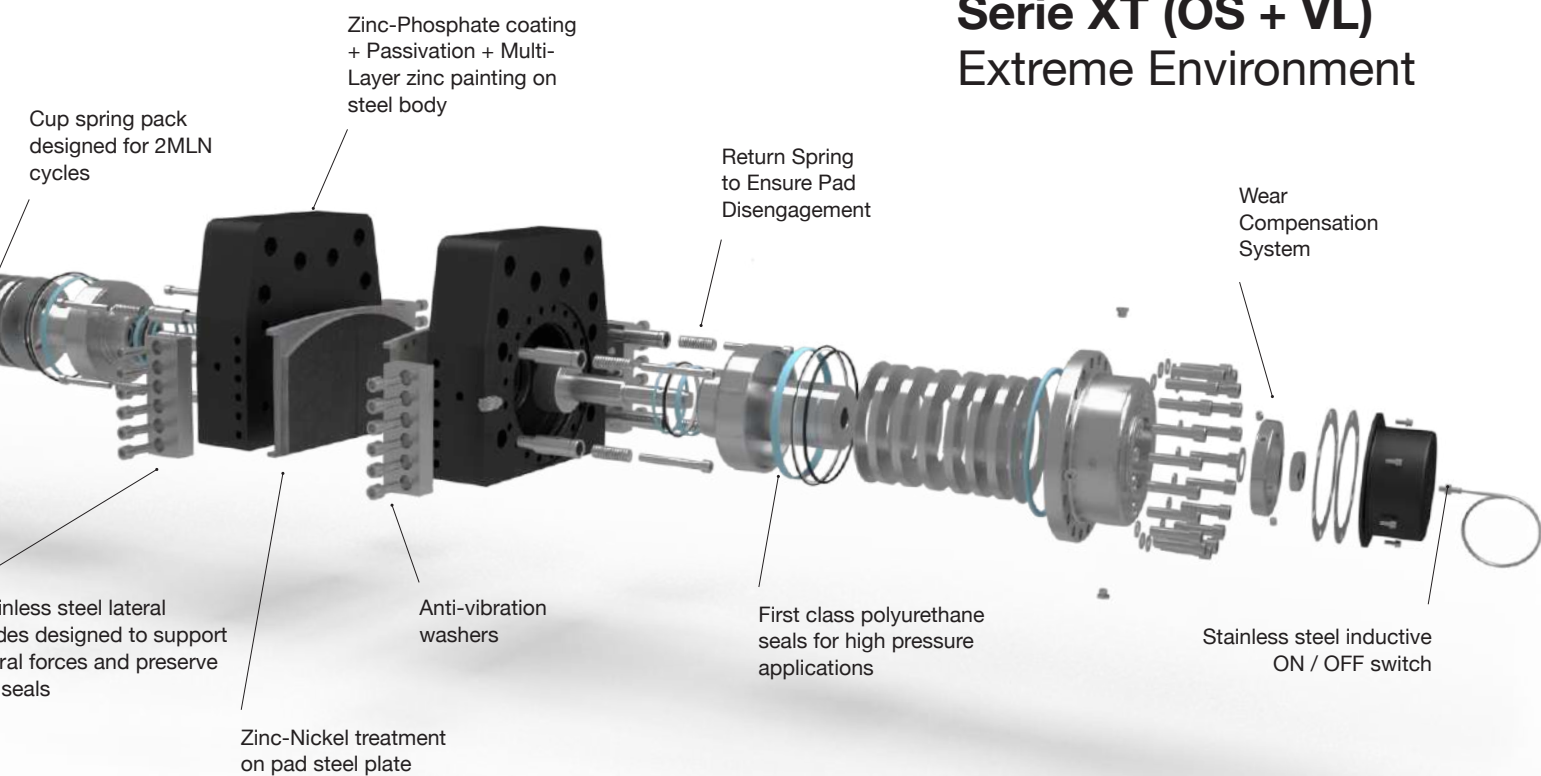
. Stainless Steel Nuts and Bolts

Braking Solutions for Extreme Environments

Serie OS
OFF-SHORE

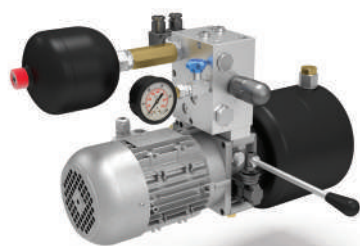
Serie VL
Very Low Temperature
(-45°C)

Serie XT (OS + VL)
Extreme Environment



Hydraulic Power Packs

duct range
can supply
that discs
steel flat
with or without
h discs are
in standard
or customized
sions and
g.



Series 2 for Oil (P)
and Spring Actuated
Brakes (N)

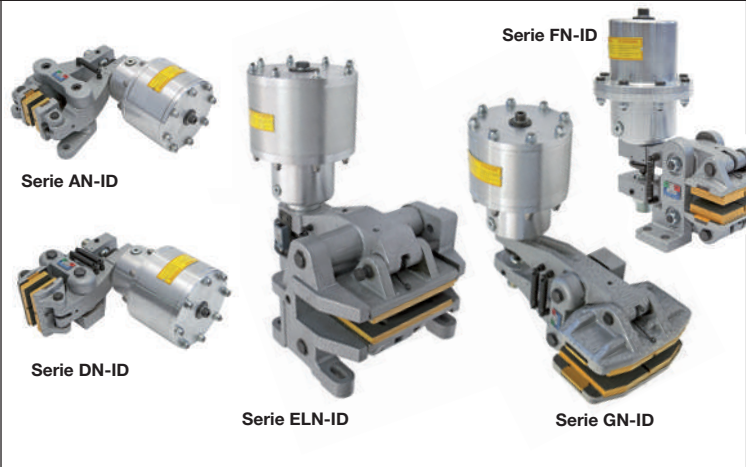
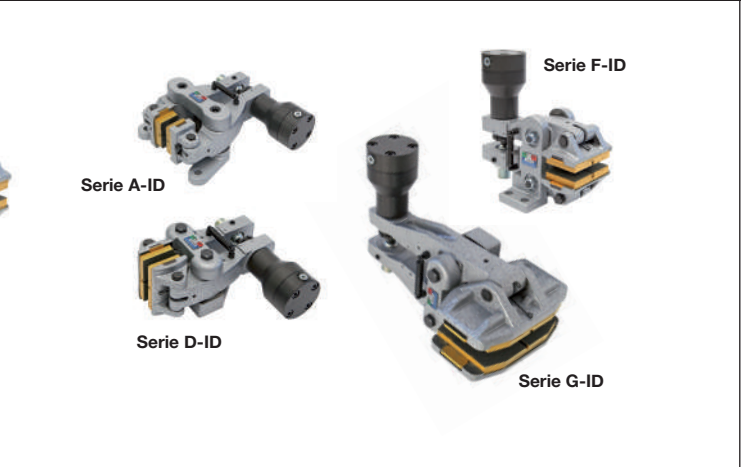
Engineered to complete the braking system and make it more efficient, safe and suitable for the specific application. All power units have redundant return valves, oil temperature control system and hand operated system to be used in case of power failure. The units are available for both oil-applied and spring-applied hydraulic brakes.





Protection Carter
for Sizes 3 and 4

Series 3 and 4
for Oil (P) and Spring
Actuated Brakes (N)

Hydraulic Caliper Brakes

NEGATIVE Spring applied / Oil released		POSITIVE Oil applied / Spring released	
THRUSTER 2N-ID,3N-ID,4N-ID		THRUSTER 3-ID	
			
Release pressure from 25 to 70 bar	Clamping force proportional to the number of springs	Maximum pressure 100 bar	Clamping force proportional to the oil pressure
Minimum braking force 6,8kN (D2N-ID/F2N-ID)	Spheroidal graphite cast iron body	Minimum braking force 14,9kN (G3-ID at 100 bar)	Spheroidal graphite cast iron body
Maximum braking force 40kN (E4N-ID)	Mineral oil based SAE/ISO 46	Maximum braking force 16kN (A3-ID at 100 bar)	Mineral oil based SAE/ISO 46

Direct Hydraulic Brakes

NEGATIVE Spring applied / Oil released		POSITIVE Oil applied / Spring released	
			
Release pressure from 65 to 180 bar	Steel body (except for ID900N and IDMS1000N)	Maximum pressure 100 bar	Steel body (ID800H2 / ID1500 / ID2000 / ID3000)
Minimum braking force 8kN (IDMS1000N)	Spheroidal graphite cast iron body (ID900N and IDMS1000N)	Minimum braking force 19,7kN (ID 800H2 at 100 bar)	Spheroidal graphite cast iron body (ID900)
Maximum braking force 270kN (ID3000N)	Mineral oil based SAE/ISO 46	Maximum braking force 300kN (ID3000 at 100bar)	Mineral oil based SAE/ISO 46

Coremo Ocmea SpA Freni e Frizioni Industriali Industrial Brakes & Clutches



Coremo Ocmea produce freni e frizioni ad azionamento meccanico, pneumatico ed idraulico per i settori del filo & cavo, lamiera, siderurgico, tessile, carta, converting, packaging ed in generale per tutte le applicazioni industriali.

Coremo Ocmea, fondata nel 1960, ha sede in Assago (MI), in uno stabilimento di 5.500 m².

Coremo Ocmea manufactures mechanical, pneumatic and hydraulic brakes and clutches for the industries of wire & cable, metalforming, steel, textile, paper, converting, packaging and for all other industrial applications.

Coremo Ocmea, established in 1960, is based in Assago - Milan (Italy) with a 5.500 m² plant.

Coremo Ocmea S.p.A. Coremo France

Via G. Galilei 12
20090 Assago (MI)
T + 39 02 488 06 97
F + 39 02 488 19 40

info@coremo.it
coremo.com

12 avenue de Prés
78180 Montigny le Bretonneux
Tel. +33/01 48 94 76 72
Fax +33/01 48 94 13 51

coremo.fr



Cert. n. 0238

ATEX
ATMOSPHÈRES EXPLOSIBLES