

Quality and Safety in Industrial Brakes

Coremo Ocmea draws on its long tradition in the manufacture of brakes and clutches for industrial applications, to look firmly to the future, to the realisation of services with a high degree of customisation: structured projects including products, technical support, maintenance and consulting.

Coremo's strong points have always lain in its precise, tailor-made design, constant product innovation and quality of components.



Our Product Range

- . **Pneumatic Caliper Brakes**
- . **Hydraulic Caliper & Direct Brakes**
- . **Manual Caliper Brakes**
- . **Small Pneumatic Brakes & Clutches**
- . **Double Ventilated Brakes**
- . **Fan Cooled Brakes**
- . **Water Cooled Brakes & Clutches**
- . **Air Tube Multidisc Brakes & Clutches**
- . **Optional Equipment:
Discs, Hydraulic Power Packs, etc.**

Coremo's products are designed to work with original Coremo replacement parts.

Support

Coremo's support is increasingly becoming a highly specialised integrated service, offering not only guidance on selection of the braking system but also consulting, maintenance, analysis and reporting. Coremo's aim is to deliver a complete service: starting from the information the customer provides to obtain a detailed picture of requirements, Coremo supplies the braking system best suited to individual needs.

Supply Chain Services

A large network of Agents and Distributors and an internal sales support allow us to reach the customer's needs. Coremo offers a flexible service worldwide, including quick reaction, safety stock, short delivery terms and customized labeling.

After Sales Support

Any help, question or special need after buying our products, are welcome and held in high consideration. Coremo provides technical support, dedicated training, spare parts availability and product reconditioning.

Design and Manufacturing

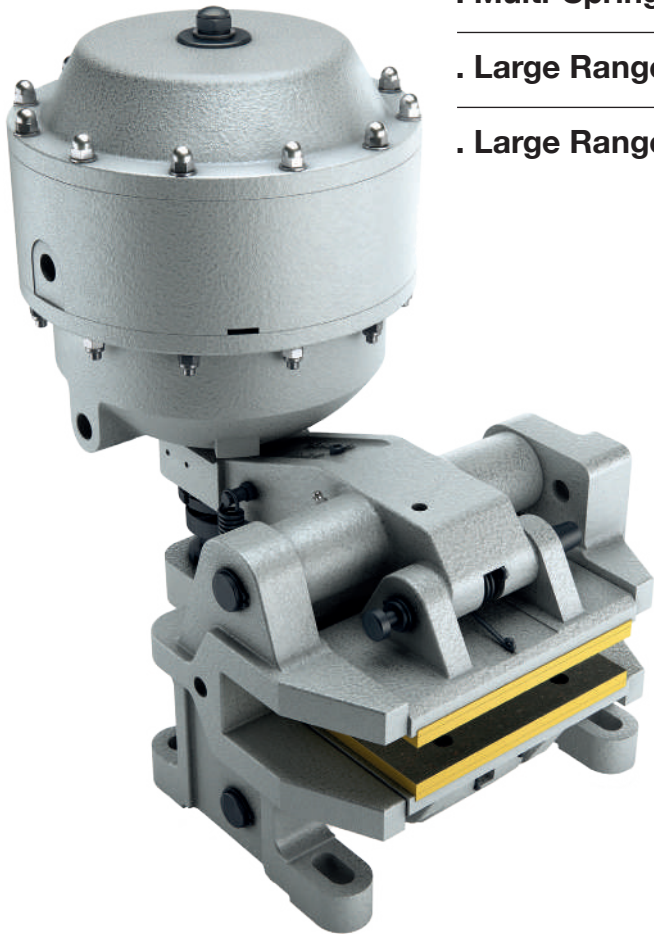
Coremo's strategy has always been based on the generation of customers loyalty, pursued through product reliability and rugged construction, ease of use and maintenance of brakes and clutches, not to mention durability, competitive pricing and prompt delivery.

Pneumatic Caliper Brakes

Air or Spring Applied Brakes

For Holding, Tensioning and Emergency

Braking Range
from **0,6 kN** to **37,5 kN**



Optional Products & Features

- . Wear Compensation
- . Inclined Mounting Kit
- . Pads Self Alignment
- . Wear Indicator
- . Double Pads
- . On-Off Indicator
- . Safety Screw
- . Multi-Springs Powered Thruster
- . Large Range of Friction Material
- . Large Range of Thrusters

Coremo Pneumatic caliper brakes are designed for those industrial applications which require air pressure to operate the braking system. The lever mechanism principle ensures simple but very effective operation. This family includes both air-actuated and failsafe brakes.

Design is particularly meticulous, while the reliability of the production process is equally impressive. Quality controls ensure a reliable, safe product and trouble-free caliper operation.

Brakes & Clutches

Manual Caliper Brakes



Braking Force
from **0,76 kN** to **39,6 kN**

- . Manual torque control by handwheel
- . Various mounting positions

Air Tube Multidisc Brakes & Clutches



High Torque Range
up to 49.500 Nm

- . Multidisc system
- . Air tube design

Fan Cooled Brakes



Torque Range
from 1,9 Nm to 1.760 Nm

- . High fan ventilation
- . High thermal capacity kevlar pads
- . Modular configuration from 1 to 8 calipers
- . 250 / 300 / 350 mm disc available

Water Cooled Brakes & Clutches



High Torque Range
up to 51.000 Nm

- . Water cooling system
- . High heat dissipation
- . Multidisc system
- . Air tube design

Double Ventilated Brakes



Braking Torque
from 0,25 Nm to 1.120 Nm

- . Two ventilated discs
- . Diaphragm technology for finest torque control

Small Pneumatic Brakes & Clutches

Mini



Torque Range
from 17 Nm to 275 Nm

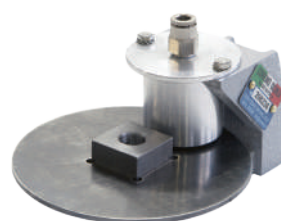
- . Compact design
- . Multidisc system
- . Low inertia aluminium rotating parts

Smart & Cab



- . Single braking thruster
- . Compact design

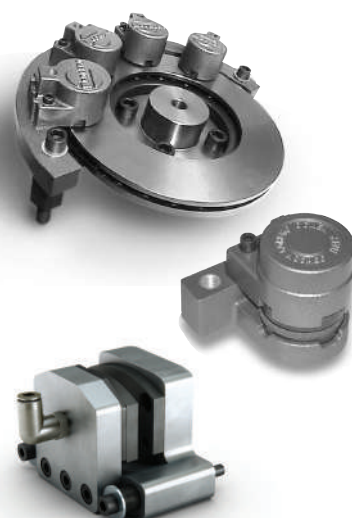
Micro



Torque Range
6 Nm at 6 bar

- . Assembled brake and disc dia. 103 mm
- . Very compact braking system

TB / TK / SB S-MAC



- . Braking unit complete with mounting bracket
- . Single or double side actuated
- . Compact design

Discs



In its product range Coremo can supply cast iron hat discs as well as steel flat discs, with or without hub. Such discs are available in standard version or customized in dimensions and machining.

Hydraulic Power Packs



Engineered to complete the braking system and make it more efficient, safe and suitable for the specific application. All power units have redundant return valves, oil temperature control system and hand operated system to be used in case of power failure. The units are available for both oil-applied and spring-applied hydraulic brakes.

Hydraulic Caliper & Direct Brakes

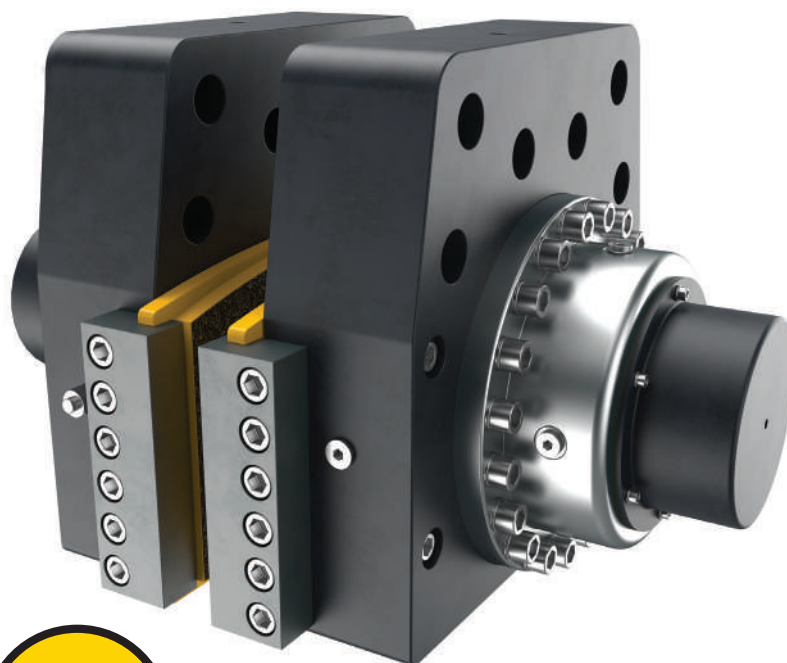
Oil or Spring Applied Brakes

Our Hydraulic brakes can cover a braking force range

from **14 kN**
to **270 kN**

Optional Products & Features

- . Solid Steel Body
- . Stainless Steel Thruster
- . Stainless Steel Regulator
- . Stainless Steel Guides for the Lining Pads
- . Stainless Steel Cover
- . Stainless Steel Nuts and Bolts



FULL
Offshore
Protection

Full Offshore Protection

Special treatments and paintings are available in order to meet specific customer standards or any environmental condition. On off-shore applications our brakes are supplied with C5-M corrosion protection class in order to reduce maintenance and lifecycle costs.

Special attention is paid to the selection and combination of different class materials and their treatments in order to minimize the electrolytic effect, which can produce unexpected oxidation while working in salt-water environment.

- . Nord-Lock Washers (anti vibration)
- . New Generations of Polyurethane Seals
- . Zinc-Phosphate Coating + Passivation + Multi Layer Zinc Painting on the Steel Body
- . Zinc-Nickel Treatment on Pad Steel Plate

Coremo Ocmea SpA Freni e Frizioni Industriali Industrial Brakes & Clutches



Coremo Ocmea produce freni e frizioni ad azionamento meccanico, pneumatico ed idraulico per i settori del filo & cavo, lamiera, siderurgico, tessile, carta, converting, packaging ed in generale per tutte le applicazioni industriali.

Coremo Ocmea, fondata nel 1960, ha sede in Assago (MI), in uno stabilimento di 5.500 m².

Coremo Ocmea manufactures mechanical, pneumatic and hydraulic brakes and clutches for the industries of wire & cable, metalforming, steel, textile, paper, converting, packaging and for all other industrial applications.

Coremo Ocmea, established in 1960, is based in Assago - Milan (Italy) with a 5.500 m² plant.

Coremo Ocmea S.p.A. Coremo France

Via G. Galilei 12
20090 Assago (MI)
T + 39 02 488 06 97
F + 39 02 488 19 40

info@coremo.it
coremo.com

12 avenue de Prés
78180 Montigny le Bretonneux
Tel. +33/01 48 94 76 72
Fax +33/01 48 94 13 51

coremo.fr



Cert. n. 0238

ATEX
ATMOSPHÈRES EXPLOSIBLES