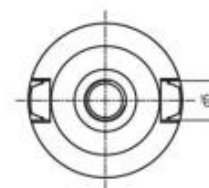
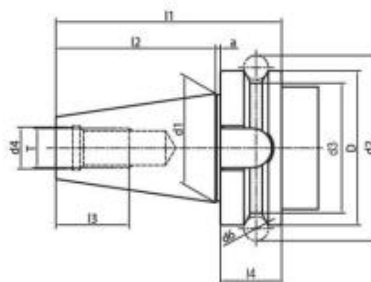


ВИННСЛА 

V I N N S L A 



JIS, MAS403, B6339

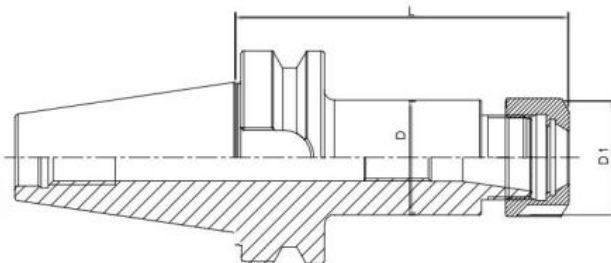


Размер	D	d1	d2	d3	d4	d5	d6	l1	l2	l3	l4	d	T
BT30	46	31.75	56.144	38	12.5	16.1	8	70.4	48.4	24	24	2	M12x1.75
BT40	63	44.45	75.679	53	17	16	10	92.4	65.4	30	25	2	M16x2.0
BT50	100	69.85	119.019	85	25	25.7	15	139.8	101.8	45	35	3	M24x3.0

JIS, MAS403, B6339

Цанговый патрон ER

G6.3

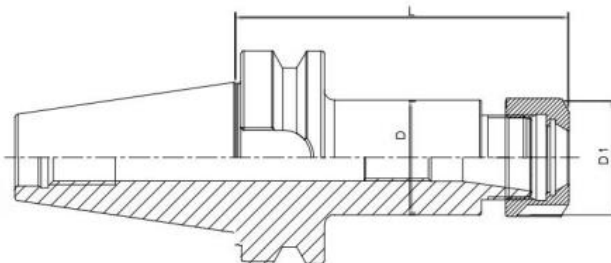


Артикул	D	D1	L	Цанга
BT30-ER16-70	28	32	70	1-10
BT30-ER20-70	34	35	70	1-13
BT30-ER25-70	42	42	70	2-16
BT30-ER32-70	40	50	70	2-20
BT30-ER40-80	50	63	80	3-26
BT30-ER16-100	28	32	100	1-10
BT30-ER20-100	34	35	100	1-13
BT30-ER25-100	42	42	100	2-16
BT30-ER32-100	50	50	100	2-20
BT40-ER16-63	28	32	63	1-10
BT40-ER20-70	34	35	70	1-13
BT40-ER25-70	42	42	70	2-16
BT40-ER32-70	50	50	70	2-20
BT40-ER40-80	50	63	80	3-26
BT40-ER16-100	28	32	100	1-10
BT40-ER20-100	34	35	100	1-13
BT40-ER25-100	42	42	100	2-16
BT40-ER32-100	50	50	100	2-20
BT40-ER40-100	50	63	100	3-26
BT40-ER16-150	28	32	150	1-10
BT40-ER20-150	34	35	150	1-13
BT40-ER25-150	42	42	150	2-16
BT40-ER32-150	50	50	150	2-20
BT40-ER40-150	50	63	150	3-26

JIS, MAS403, B6339

Цанговый патрон ER

G6.3

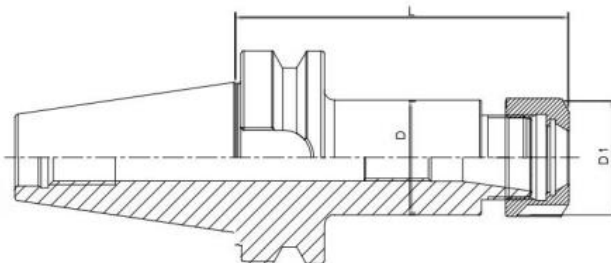


Артикул	D	D1	L	Цанга
BT50-ER16-80	28	28	80	1-10
BT50-ER20-80	34	35	80	1-13
BT50-ER32-80	50	50	80	2-20
BT50-ER40-80	63	63	80	3-26
BT50-ER16-100	28	32	100	1-10
BT50-ER20-100	34	35	100	1-13
BT50-ER25-100	42	42	100	2-16
BT50-ER32-100	50	50	100	2-20
BT50-ER40-100	63	63	100	3-32
BT50-ER16-150	28	32	150	1-10
BT50-ER20-150	34	35	150	1-13
BT50-ER25-160	42	50	160	2-16
BT50-ER32-160	50	50	160	2-20
BT50-ER40-160	63	63	160	3-32
BT50-ER32-200	50	50	200	2-20
BT50-ER40-200	63	63	200	3-26
BT50-ER32-250	50	50	250	2-20
BT50-ER40-250	63	63	250	3-26
BT50-ER32-300	50	50	300	2-20
BT50-ER40-300	63	63	300	3-26

JIS, MAS403, B6339

Цанговый патрон ER

G6.3

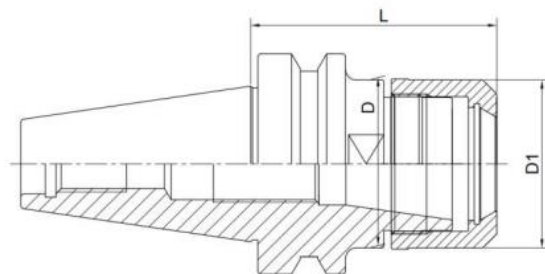


Артикул	D	D1	L	Цанга
BT40-ER8M-70	12	12	70	1-5
BT40-ER11M-70	16	16	70	1-7
BT40-ER16M-70	22	22	70	1-10
BT40-ER20M-70	28	28	70	1-13
BT40-ER25M-70	35	35	70	2-16
BT40-ER8M-100	12	12	100	1-5
BT40-ER11M-100	16	16	100	1-7
BT40-ER16M-100	22	22	100	1-10
BT40-ER20M-100	28	28	100	1-13
BT40-ER25M-100	35	35	100	2-16
BT40-ER11M-150	16	16	150	1-7
BT40-ER16M-150	22	22	150	1-10
BT40-ER20M-150	28	28	150	1-13
BT40-ER25M-150	35	35	150	2-16
BT50-ER20M-100	28	28	100	1-13
BT50-ER25M-100	35	35	100	2-16
BT50-ER16M-150	22	22	150	1-10
BT50-ER20M-150	28	28	150	1-13
BT50-ER25M-150	35	35	150	2-16

JIS, MAS403, B6339

Цанговый патрон ER

G2.5

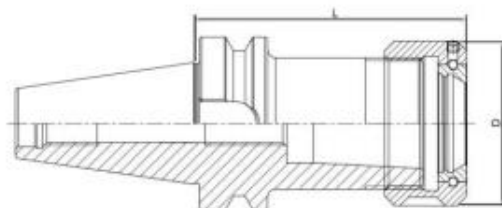


Артикул	D	D1	L	Цанга
BT30-GER16-60	30	30	60	1-10
BT30-GER20-60	35	35	60	1-13
BT30-GER25-60	40	40	60	2-16
BT30-GER32-70	48	48	70	2-20
BT40-GER16-70	30	30	70	1-10
BT40-GER20-70	35	35	70	1-13
BT40-GER25-70	40	40	70	2-16
BT40-GER32-70	48	48	70	2-20
BT40-GER16-100	30	30	100	1-10
BT40-GER20-100	35	35	100	1-13
BT40-GER25-100	40	40	100	2-16
BT40-GER32-100	48	48	100	2-20
BT50-GER16-100	30	30	100	1-10
BT50-GER20-100	35	35	100	1-13
BT50-GER25-100	40	40	100	2-16
BT50-GER32-100	48	48	100	2-20
BT50-GER25-150	40	40	150	2-16
BT50-GER32-150	48	48	150	2-20

JIS, MAS403, B6339

Цанговый патрон OZ

G6.3

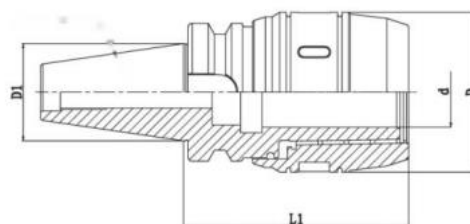


Артикул	D	L	Цанга
BT30-OZ16-70	43	70	3-16
BT30-OZ25-80	60	80	3-25
BT40-OZ16-70	43	70	3-16
BT40-OZ25-70	60	70	3-25
BT40-OZ32-90	72	90	6-32
BT50-OZ25-85	60	85	3-25
BT50-OZ32-90	72	90	6-32

JIS, MAS403, B6339

Силовой Патрон

G6.3

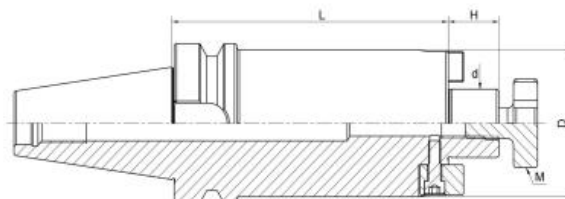


Артикул	d	D	L1	Цанга
BT30-MC20-90	20	50	90	C20
BT30-MC25-90	25	59	90	C25
BT30-MC32-105	32	68	105	C32
BT40-MC20-90	20	50	90	C20
BT40-MC25-90	25	59	90	C25
BT40-MC32-90	32	68	90	C32
BT40-MC32-105	32	70	105	C32
BT40-MC42-120	42	88	120	C42
BT50-MC20-105	20	50	105	C20
BT50-MC25-105	25	59	105	C25
BT50-MC32-110	32	73	110	C32
BT50-MC32-165	32	73	165	C32
BT50-MC32-200	32	73	200	C32
BT50-MC32-250	32	73	250	C32
BT50-MC32-300	32	73	300	C32
BT50-MC32-350	32	73	350	C32
BT50-MC32-400	32	73	400	C32
BT50-MC32-450	32	73	450	C32
BT50-MC42-110	42	88	110	C42
BT50-MC42-165	42	88	165	C42
BT50-MC42-200	42	88	200	C42
BT50-MC42-250	42	88	250	C42

JIS, MAS403, B6339

Оправка для насадных фрез

G6.3

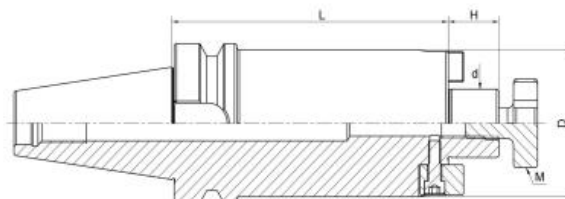


Артикул	d	L	D	H	M
BT30-FMB16-45	16	45	38	16	M8
BT30-FMB22-60	22	60	48	18	M10
BT30-FMB27-60	27	60	58	20	M12
BT30-FMB32-60	32	60	78	22	M16
BT40-FMB16-60	16	60	38	16	M8
BT40-FMB22-60	22	60	48	18	M10
BT40-FBM27-60	27	60	58	20	M12
BT40-FBM32-60	32	60	78	22	M16
BT40-FBM40-60	40	60	88	25	M20
BT40-FMB16-100	16	100	38	16	M8
BT40-FBM22-100	22	100	48	18	M10
BT40-FMB27-100	27	100	58	20	M12
BT40-FBM32-100	32	100	78	22	M16
BT40-FMB40-100	40	100	88	25	M20
BT40-FMB16-150	16	150	38	16	M8
BT40-FBM22-150	22	150	48	18	M10
BT40-FMB27-150	27	150	58	20	M12
BT40-FMB32-150	32	150	78	22	M16
BT40-FMB40-150	40	150	88	25	M20
BT40-FMB22-200	22	200	48	18	M10
BT40-FMB27-200	27	200	58	20	M12
BT40-FBM32-200	32	200	78	22	M16
BT40-FMB40-200	40	200	88	25	M20

JIS, MAS403, B6339

Оправка для насадных фрез

G6.3

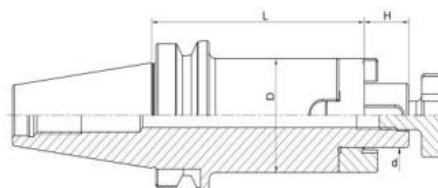


Артикул	d	L	D	H	M
BT50-FBM16-60	16	60	38	16	M8
BT50-FMB22-60	22	60	48	18	M10
BT50-FMB27-60	27	60	58	20	M12
BT50-FMB32-60	32	60	78	22	M16
BT50-FMB40-60	40	60	88	25	M20
BT50-FBM60-75	60	75	129	25	M30
BT50-FMB16-100	16	100	38	16	M8
BT50-FMB22-100	22	100	48	18	M10
BT50-FBM27-100	27	100	58	20	M12
BT50-FBM32-100	32	100	78	22	M16
BT50-FBM40-100	40	100	88	25	M20
BT50-FMB22-150	22	150	48	18	M10
BT50-FMB27-150	27	150	58	20	M12
BT50-FMB32-150	32	150	78	22	M16
BT50-FMB40-150	40	150	88	25	M20
BT50-FMB22-200	22	200	48	18	M10
BT50-FMB27-200	27	200	58	20	M12
BT50-FMB32-200	32	200	78	22	M16
BT50-FMB40-200	40	200	88	25	M20

JIS, MAS403, B6339

Комбинированная оправка для насадных фрез

G6.3

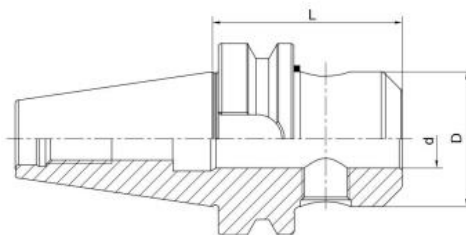


Артикул	d	D	H	L
BT30-SEMC16-45	16	32	17	45
BT30-SEMC22-50	22	40	19	50
BT30-SEMC27-50	27	48	21	50
BT40-SEMC16-55	16	32	17	55
BT40-SEMC22-55	22	40	19	55
BT40-SEMC27-55	27	48	21	55
BT40-SEMC32-60	32	58	24	60
BT40-SEMC40-60	40	70	27	60
BT40-SEMC16-100	16	32	17	100
BT40-SEMC22-100	22	40	19	100
BT40-SEMC27-100	27	48	21	100
BT50-SEMC16-70	16	32	17	70
BT50-SEMC22-70	22	40	19	70
BT50-SEMC27-70	27	48	21	70
BT50-SEMC32-70	32	58	24	70
BT50-SEMC40-70	40	70	27	70
BT50-SEMC16-100	16	32	17	70
BT50-SEMC22-100	22	40	19	100
BT50-SEMC27-100	27	48	21	100
BT50-SEMC32-100	32	58	24	100
BT50-SEMC40-100	40	70	27	100
BT50-SEMC16-160	16	32	17	160
BT50-SEMC22-160	22	40	19	160
BT50-SEMC27-160	27	48	21	160
BT50-SEMC32-160	32	58	24	160
BT50-SEMC40-160	40	70	27	160

JIS, MAS403, B6339

Патрон Weldon

側固刀柄



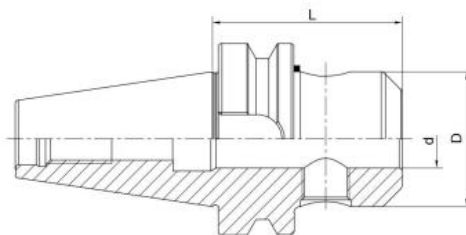
G6.3

Артикул	d	D	L
BT30-SLA6-50	6	25	50
BT30-SLA8-50	8	28	50
BT30-SLA10-50	10	35	50
BT30-SLA12-50	12	42	50
BT30-SLA14-50	14	44	50
BT30-SLA16-63	16	48	63
BT30-SLA18-63	18	50	63
BT30-SLA20-63	20	52	63
BT40-SLA6-50	6	25	50
BT40-SLA8-50	8	28	50
BT40-SLA10-63	10	35	63
BT40-SLA12-63	12	42	63
BT40-SLA14-63	14	44	63
BT40-SLA16-63	16	48	63
BT40-SLA18-63	18	50	63
BT40-SLA20-63	20	52	63
BT40-SLA6-100	6	25	100
BT40-SLA8-100	8	28	100
BT40-SLA10-100	10	35	100
BT40-SLA12-100	12	42	100
BT40-SLA14-100	14	44	100
BT40-SLA16-100	16	48	100
BT40-SLA18-100	18	50	100
BT40-SLA20-100	20	52	100
BT40-SLA25-100	25	65	100
BT40-SLA32-100	32	72	100
BT40-SLA40-120	40	80	120

JIS, MAS403, B6339

Патрон Weldon

側固刀柄



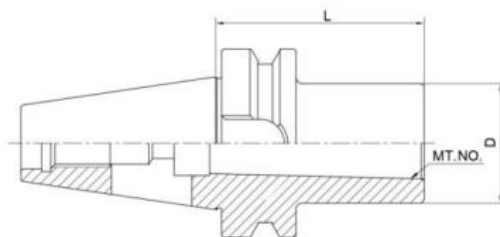
G6.3

Артикул	d	D	L
BT40-SLA6-150	6	25	150
BT40-SLA8-150	8	28	150
BT40-SLA10-150	10	35	150
BT40-SLA12-150	12	42	150
BT40-SLA14-150	14	44	150
BT40-SLA16-150	16	48	150
BT40-SLA18-150	18	50	150
BT40-SLA20-150	20	52	150
BT40-SLA25-150	25	65	150
BT40-SLA32-150	32	72	150
BT40-SLA40-150	40	80	150
BT50-SLA6-63	6	25	63
BT50-SLA8-63	8	28	63
BT50-SLA10-63	10	35	63
BT50-SLA12-80	12	42	80
BT50-SLA14-80	14	44	80
BT50-SLA16-80	16	48	80
BT50-SLA18-80	18	50	80
BT50-SLA20-100	20	52	100
BT50-SLA25-100	25	65	100
BT50-SLA32-100	32	72	100
BT50-SLA40-110	40	80	110
BT50-SLA6-150	6	25	150
BT50-SLA8-150	8	28	150
BT50-SLA10-150	10	35	150
BT50-SLA12-150	12	42	150
BT50-SLA14-150	14	44	150
BT50-SLA16-150	16	48	150
BT50-SLA18-150	18	50	150
BT50-SLA20-150	20	52	150
BT50-SLA25-150	25	65	150
BT50-SLA32-150	32	75	150
BT50-SLA40-150	40	80	150

JIS, MAS403, B6339

Оправка фрезерная для МК по DIN6383

G6.3



Артикул	MT	D	L
BT30-MTA1-45	1	25	45
BT30-MTA2-60	2	32	60
BT30-MTA3-75	3	40	75
BT40-MTA1-45	1	25	45
BT40-MTA2-60	2	32	60
BT40-MTA3-75	3	40	75
BT40-MTA4-90	4	48	90
BT50-MTA1-45	1	25	45
BT50-MTA2-60	2	32	60
BT50-MTA3-65	3	40	65
BT50-MTA4-95	4	48	95
BT50-MTA5-120	5	63	120

JIS, MAS403, B6339

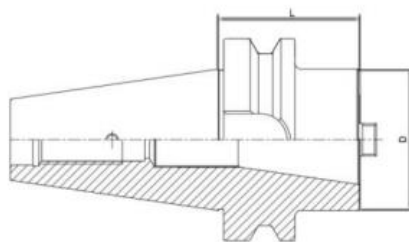
Оправка фрезерная для МК с резьбой по DIN6383

G6.3

Артикул	MT	D	L
BT40-MTB1-45	1	25	45
BT40-MTB2-60	2	32	60
BT40-MTB3-75	3	40	75
BT40-MTB4-90	4	48	90
BT50-MTB1-45	1	25	45
BT50-MTB2-60	2	32	60
BT50-MTB3-65	3	40	65
BT50-MTB4-70	4	48	70
BT50-MTB5-120	5	63	120

JIS, MAS403, B6339

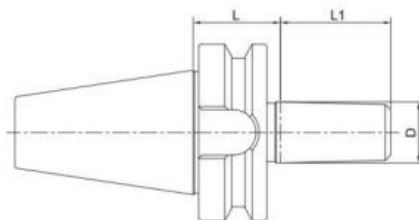
Оправка фрезерная для крепления SK-оправок (переходник)



Артикул	D	L
BT40-BT30-60	63	60
BT40-BT40-100	63	100
BT50-BT40-70	70	70
BT50-BT50-150	98	150

JIS, MAS403, B6339

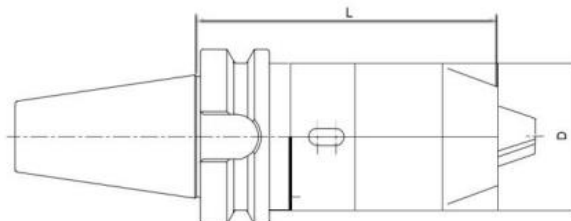
Оправка фрезерная по DIN 238, для сверлильных патронов



Артикул	D	L	L1
BT30-B12-25	B12	25	18.5
BT30-B16-25	B16	25	24
BT40-B12-32	B12	32	18.5
BT40-B16-32	B16	32	24
BT40-B18-32	B18	32	32
BT40-B22-32	B22	32	40.5
BT50-B16-45	B16	45	24
BT50-B18-45	B18	45	32
BT50-B22-45	B22	45	40.5

JIS, MAS403, B6339

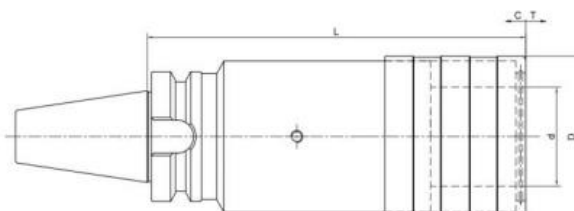
Сверлильный патрон



Артикул	D	L	Диапазон зажима
BT30-APU08-80	38	80	1-8
BT30-APU13-110	48	110	1-13
BT40-APU08-85	38	85	1-8
BT40-APU13-105	48	105	1-13
BT40-APU16-110	53	110	3-16
BT50-APU08-90	38	90	1-8
BT50-APU13-105	48	105	1-13
BT50-APU16-115	53	115	3-16

JIS, MAS403, B6339

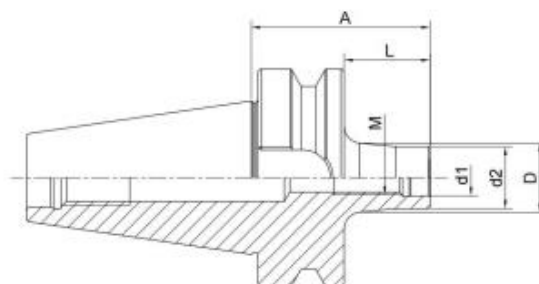
Патроны резьбонарезные под быстросменные вставки



Артикул	Модель цанги	d	D	L	T
BT30-TC312-70	1	19	38	70	7.5
BT30-TC820-95	2	31	54	95	12.5
BT40-TC312-65	1	19	38	65	7.5
BT40-TC820-93	2	31	53	93	12.5
BT40-TC1433-166	3	48	78	166	22
BT50-TC0312-100	1	19	38	100	7.5
BT50-TC820-100	2	31	53	100	12.5
BT50-TC1433-142	3	48	78	142	22

JIS, MAS403, B6339

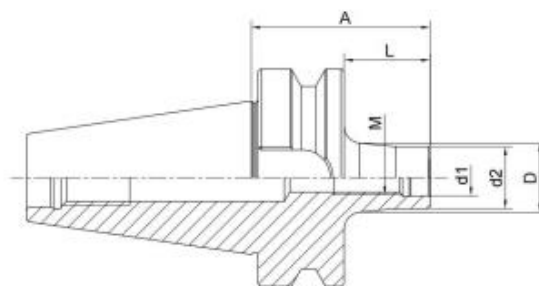
Патроны для модульных фрезерных головок



Артикул	M	d1	d2	A	L	D
BT40-BOM08-52	8	8.5	14.5	52	25	15
BT40-BOM08-77	8	8.5	14.5	77	50	23
BT40-BOM08-102	8	8.5	14.5	102	75	23
BT40-BOM08-127	8	8.5	14.5	127	100	25
BT40-BOM10-32	10	10.5	18	32	5	18
BT40-BOM10-52	10	10.5	18	52	25	20
BT40-BOM10-77	10	10.5	18	77	50	23
BT40-BOM10-102	10	10.5	18	102	75	28
BT40-BOM10-127	10	10.5	18	127	100	32
BT40-BOM10-177	10	10.5	18	177	150	36.5
BT40-BOM12-32	12	12.5	21	32	5	21
BT40-BOM12-52	12	12.5	21	52	25	24
BT40-BOM12-77	12	12.5	21	77	50	24
BT40-BOM12-102	12	12.5	21	102	75	31
BT40-BOM12-127	12	12.5	21	127	100	31
BT40-BOM12-152	12	12.5	21	152	125	36
BT40-BOM12-177	12	12.5	21	177	150	38
BT40-BOM16-32	16	17	29	32	5	29
BT40-BOM16-52	16	17	29	52	25	29
BT40-BOM16-77	16	17	29	77	50	34
BT40-BOM16-102	16	17	29	102	75	34
BT40-BOM16-127	16	17	29	127	100	36
BT40-BOM16-152	16	17	29	152	125	40
BT40-BOM16-177	16	17	29	177	150	42.5

JIS, MAS403, B6339

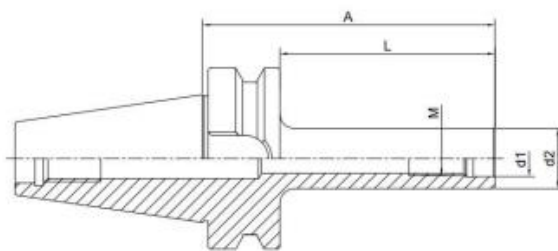
Патроны для модульных фрезерных головок



Артикул	M	d1	d2	A	L	D
BT50-BOM08-88	8	8.5	14.5	88	50	23
BT50-BOM08-138	8	8.5	14.5	138	100	25
BT50-BOM08-188	8	8.5	14.5	188	150	30
BT50-BOM10-88	10	10.5	18	88	50	23
BT50-BOM10-138	10	10.5	18	138	100	32
BT50-BOM10-188	10	10.5	18	188	150	36.5
BT50-BOM12-88	12	12.5	21	88	50	24
BT50-BOM12-138	12	12.5	21	138	100	33
BT50-BOM12-188	12	12.5	21	188	150	40
BT50-BOM16-88	16	17	29	88	50	34
BT50-BOM16-138	16	17	29	138	100	36
BT50-BOM16-188	16	17	29	188	150	42.5

JIS, MAS403, B6339

Патроны для модульных фрезерных головок (Цилиндрические)



Артикул	M	d1	d2	A	L
BT40-M10-102	10	10.5	18	102	75
BT40-M10-127	10	10.5	18	127	100
BT40-M10-177	10	10.5	18	177	150
BT40-M12-108	12	12.5	21	108	75
BT40-M12-127	12	12.5	21	127	100
BT40-M12-152	12	12.5	21	152	125
BT40-M12-177	12	12.5	21	177	150
BT40-M16-102	16	17	29	102	75
BT40-M16-127	16	17	29	127	100
BT40-M16-152	16	17	29	152	125
BT40-M16-177	16	17	29	177	150
BT50-M10-138	10	10.5	18	138	100
BT50-M10-188	10	10.5	18	188	150
BT50-M12-138	12	12.5	21	138	100
BT50-M12-188	12	12.5	21	188	150
BT50-M16-138	16	17	29	138	100
BT50-M16-188	16	17	29	188	150

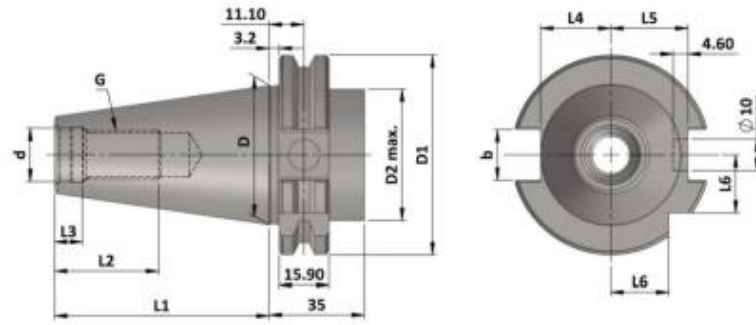
JIS, MAS403, B6339

Контрольная оправка



Артикул	D	L
BT30-32-250	32	250
BT40-40-300	40	300
BT50-50-300	50	300

DIN69871

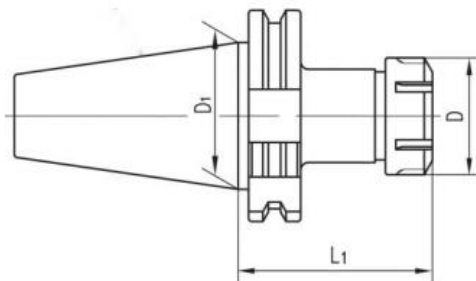


Размер	d	d1	D	D1	D2	E	b	G	L1	L2	L3	L4	L5	L6
SK30	13	4	31.75	50	45	21	16.1	M12	47.8	24	5.5	16.3	19.0	15.00
SK40	17	4	44.45	63.55	50	27	16.1	M16	68.4	32	8.2	22.7	25.0	18.50
SK50	25	6	69.85	97.50	80	42	25.7	M24	101.8	47	11.5	35.5	37.7	30.00

DIN69871

Цанговый патрон ER

G6.3

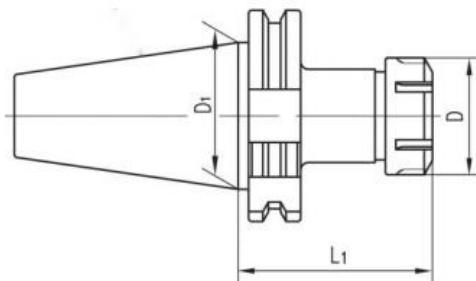


Артикул	D	D1	L	Цанга
SK30-ER16-70	32	32	70	1-10
SK30-ER20-70	35	35	70	2-13
SK30-ER25-70	42	42	70	2-16
SK30-ER32-70	50	50	70	2-20
SK30-ER40-70	63	63	70	3-26
SK30-ER16-100	32	32	100	1-10
SK30-ER20-100	35	35	100	2-13
SK30-ER25-100	42	42	100	2-16
SK30-ER32-100	50	50	100	2-20
SK40-ER16-70	32	32	70	1-10
SK40-ER20-70	35	35	70	2-13
SK40-ER25-70	42	42	70	2-16
SK40-ER32-70	50	50	80	2-20
SK40-ER40-80	63	63	100	3-26
SK40-ER16-100	32	32	100	1-10
SK40-ER20-100	35	35	100	2-13
SK40-ER25-100	42	42	100	2-16
SK40-ER32-100	50	50	100	2-20
SK40-ER40-100	63	63	100	3-26
SK40-ER16-160	32	32	160	1-10
SK40-ER20-160	32	35	160	2-13
SK40-ER25-160	42	42	160	2-16
SK40-ER32-160	50	50	160	2-20
SK40-ER40-160	63	63	160	3-26

DIN69871

Цанговый патрон ER

G6.3

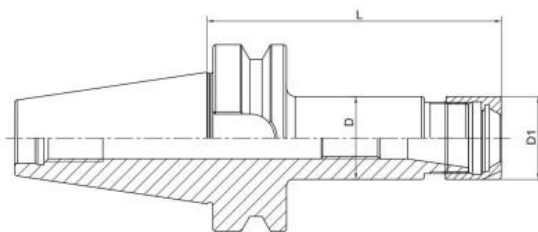


Артикул	D	D1	L	Цанга
SK50-ER16-70	32	32	70	1-10
SK50-ER20-70	35	35	70	1-13
SK50-ER25-60	42	42	60	2-16
SK50-ER32-70	50	50	70	2-20
SK50-ER40-70	63	63	70	2-26
SK50-ER16-100	32	32	100	1-10
SK50-ER20-100	35	35	100	1-13
SK50-ER25-100	42	42	100	2-16
SK50-ER32-100	50	50	100	2-20
SK50-ER40-100	63	63	100	3-26
SK50-ER16-150	32	32	150	1-10
SK50-ER20-150	35	35	150	1-13
SK50-ER25-150	42	42	150	2-16
SK50-ER32-150	50	50	150	2-20
SK50-ER40-150	63	63	150	3-26

DIN69871

Цанговый патрон ER с мини гайкой

G6.3

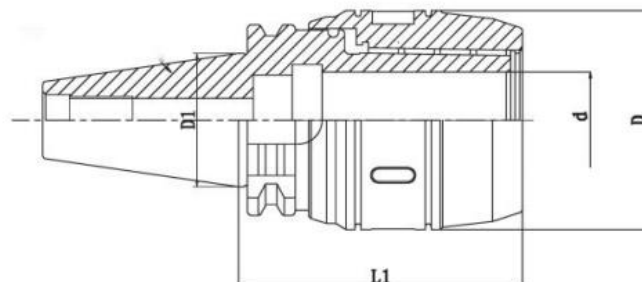


Артикул	D	D1	L	Цанга
SK40-ER11M-70	16	16	70	1-7
SK40-ER16M-70	22	22	70	1-10
SK40-ER20M-70	28	28	70	1-13
SK40-ER25M-70	35	35	70	2-16
SK40-ER11M-100	16	16	100	1-7
SK40-ER16M-100	22	22	100	1-10
SK40-ER20M-100	28	28	100	1-13
SK40-ER25M-100	35	35	100	2-16
SK40-ER11M-150	16	16	150	1-7
SK40-ER16M-150	22	22	150	1-10
SK40-ER20M-150	28	28	150	1-13
SK40-ER25M-150	35	35	150	2-16
SK50-ER16M-70	22	22	70	1-10
SK50-ER20M-70	28	28	70	1-13
SK50-ER25M-70	35	35	70	2-16
SK50-ER16M-100	22	22	100	1-10
SK50-ER20M-100	28	28	100	1-13
SK50-ER25M-100	35	35	100	2-16
SK50-ER16M-150	22	22	150	1-10
SK50-ER20M-150	28	28	150	1-13
SK50-ER25M-150	35	35	150	2-16

DIN69871

Силовой Патрон

G6.3

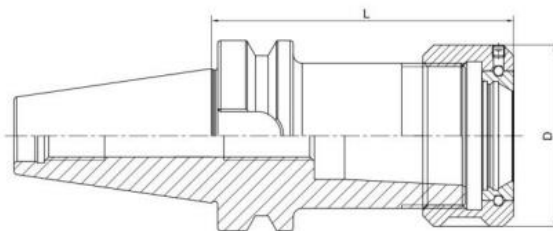


Артикул	d	D	L1	Цанга
SK30-MC20-80	20	55	80	C20
SK30-MC25-80	25	58	80	C25
SK40-MC20-90	20	55	90	C20
SK40-MC20-120	20	55	120	C20
SK40-MC25-90	25	58	90	C25
SK40-MC32-105	32	68	105	C32
SK40-MC32-135	32	68	135	C32
SK50-MC20-100	20	55	100	C20
SK50-MC20-150	20	55	150	C20
SK50-MC25-110	25	68	100	C25
SK50-MC32-110	32	68	110	C32
SK50-MC32-135	32	68	135	C32
SK50-MC32-165	32	68	165	C32
SK50-MC32-200	32	68	200	C32
SK50-MC42-120	42	88	120	C42
SK50-MC42-165	42	88	165	C42
SK50-MC42-200	42	88	200	C42

DIN69871

Цанговый патрон OZ

G6.3

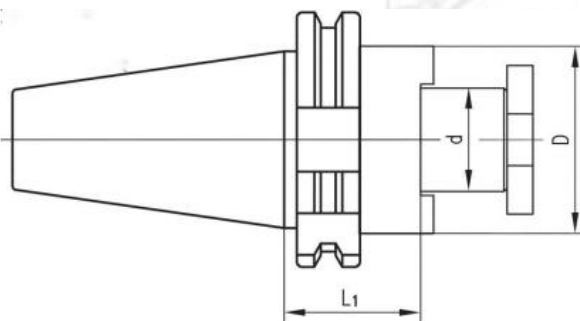


Артикул	D	L	Цанга
SK40-OZ16-70	43	70	2-16
SK40-OZ25-70	60	70	2-25
SK40-OZ32-90	72	90	4-32
SK40-OZ16-100	43	100	2-16
SK40-OZ25-100	60	100	2-25
SK50-OZ25-70	60	70	2-25
SK50-OZ32-80	72	80	4-32
SK50-OZ25-100	60	100	2-25

DIN69871

Оправка для насадных фрез

G6.3

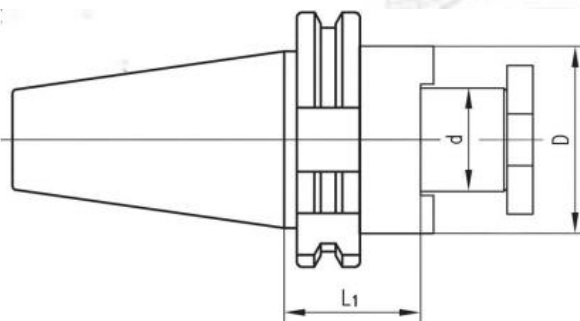


Артикул	d	D	L	H	M
SK30-FMB16-40	16	38	40	17	M8
SK30-FMB22-40	22	48	40	19	M10
SK30-FMB27-50	27	58	50	21	M12
SK30-FMB32-50	32	78	50	24	M16
SK40-FMB16-35	16	38	35	17	M8
SK40-FMB22-35	22	48	35	19	M10
SK40-FMB27-40	27	58	40	21	M12
SK40-SMB32-50	32	78	50	24	M16
SK40-FMB40-50	40	88	50	27	M20
SK40-FMB16-100	16	38	100	17	M8
SK40-FMB22-100	22	48	100	19	M10
SK40-FMB27-100	27	58	100	21	M12
SK40-FMB32-100	32	78	100	24	M16
SK40-FMB40-100	40	88	100	27	M20
SK40-FMB16-160	16	38	160	17	M8
SK40-FMB22-160	22	48	160	19	M10
SK40-FMB27-160	27	58	160	21	M12
SK40-FMB32-160	32	78	160	24	M16
SK40-FMB40-160	40	88	160	27	M20

DIN69871

Оправка для насадных фрез

G6.3

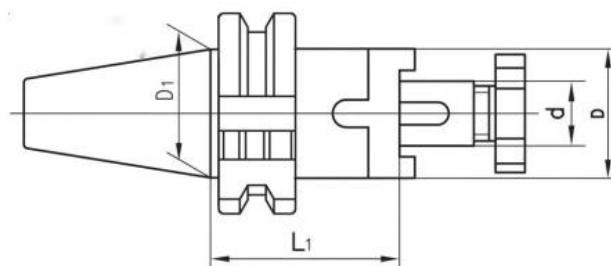


Артикул	d	D	L	H	M
SK50-FMB16-35	16	38	35	17	M8
SK50-FMB22-35	22	48	35	19	M10
SK50-FMB27-40	27	58	40	21	M12
SK50-FMB32-50	32	78	50	24	M16
SK50-FMB40-50	40	88	50	27	M20
SK50-FMB16-100	16	38	100	17	M8
SK50-FMB22-100	22	48	100	19	M10
SK50-FMB27-100	27	58	100	21	M12
SK50-FMB32-100	32	78	100	24	M16
SK50-FMB40-100	40	88	100	27	M20
SK50-FMB16-150	16	38	150	17	M8
SK50-FMB22-150	22	48	150	19	M10
SK50-FMB27-150	27	58	150	21	M12
SK50-FMB32-150	32	78	150	24	M16
SK50-FMB40-150	40	88	150	27	M20

DIN69871

Комбинированная оправка для насадных фрез

G6.3

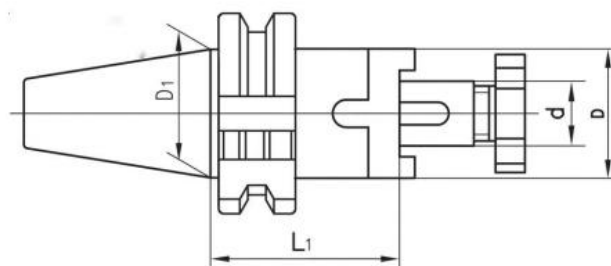


Артикул	d	D	l	L
SK30-SEMC16-50	16	32	16	50
SK30-SEMC22-50	22	40	18	50
SK30-SEMC27-55	27	48	20	55
SK30-SEMC32-60	32	58	22	60
SK40-SEMC16-55	16	32	16	55
SK40-SEMC22-55	22	40	18	55
SK40-SEMC27-55	27	48	20	55
SK40-SEMC32-60	32	58	22	60
SK40-SEMC40-60	40	70	25	60
SK40-SEMC16-100	16	32	16	100
SK40-SEMC22-100	22	40	18	100
SK40-SEMC27-100	27	48	20	100
SK40-SEMC32-100	32	58	22	100
SK40-SEMC40-100	40	70	25	100
SK40-SEMC16-160	16	32	16	160
SK40-SEMC22-160	22	40	18	160
SK40-SEMC27-160	27	48	20	160
SK40-SEMC32-160	32	58	22	160
SK40-SEMC40-160	40	70	25	160

DIN69871

Комбинированная оправка для насадных фрез

G6.3

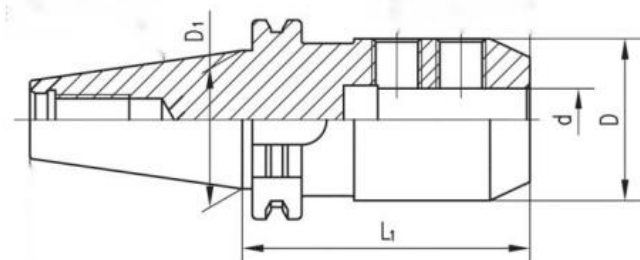


Артикул	d	D	l	L
SK50-SEMC16-55	16	32	17	55
SK50-SEMC22-55	22	40	19	55
SK50-SEMC27-55	27	48	21	55
SK50-SEMC32-55	32	58	24	55
SK50-SEMC40-55	40	70	27	55
SK50-SEMC16-100	16	32	17	100
SK50-SEMC22-100	22	40	19	100
SK50-SEMC27-100	27	48	21	100
SK50-SEMC32-100	32	58	24	100
SK50-SEMC40-100	40	70	27	100
SK50-SEMC16-160	16	32	17	160
SK50-SEMC22-160	22	40	19	160
SK50-SEMC27-160	27	48	21	160
SK50-SEMC32-160	32	58	24	160
SK50-SEMC40-160	40	70	27	160

DIN69871

Патрон Weldon

G6.3

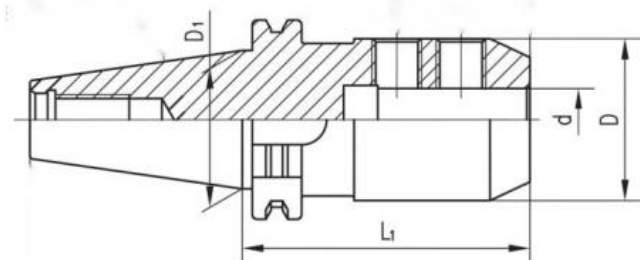


Артикул	d	D	L1
SK30-SLA6-50	6	25	50
SK30-SLA8-50	8	28	50
SK30-SLA10-50	10	35	50
SK30-SLA12-50	12	42	50
SK30-SLA14-63	14	44	63
SK30-SLA16-63	16	48	63
SK30-SLA18-63	18	50	63
SK30-SLA20-70	20	52	70
SK40-SLA6-50	6	25	50
SK40-SLA8-50	8	28	50
SK40-SLA10-50	10	35	50
SK40-SLA12-50	12	42	50
SK40-SLA14-50	14	44	50
SK40-SLA16-63	16	48	63
SK40-SLA18-63	18	50	63
SK40-SLA20-63	20	52	63
SK40-SLA6-100	6	25	100
SK40-SLA8-100	8	28	100
SK40-SLA10-100	10	35	100
SK40-SLA12-100	12	42	100
SK40-SLA14-100	14	44	100
SK40-SLA16-100	16	48	100
SK40-SLA18-100	18	50	100
SK40-SLA20-100	20	52	100
SK40-SLA25-100	25	65	100
SK40-SLA32-100	32	72	100
SK40-SLA40-120	40	80	120

DIN69871

Патрон Weldon

G6.3

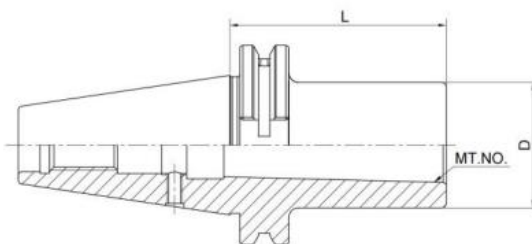


Артикул	d	D	L1
SK40-SLA6-150	6	25	150
SK40-SLA8-150	8	28	150
SK40-SLA10-150	10	35	150
SK40-SLA12-150	12	42	150
SK40-SLA14-150	14	44	150
SK40-SLA16-150	16	48	150
SK40-SLA18-150	18	50	150
SK40-SLA20-150	20	52	150
SK40-SLA25-150	25	65	150
SK40-SLA32-150	32	72	150
SK40-SLA40-150	40	80	150
SK50-SLA6-63	6	25	63
SK50-SLA8-63	8	28	63
SK50-SLA10-63	10	35	63
SK50-SLA12-63	12	42	63
SK50-SLA14-63	14	44	63
SK50-SLA16-63	16	48	63
SK50-SLA18-63	18	50	63
SK50-SLA20-63	20	52	63
SK50-SLA25-80	25	65	80
SK50-SLA32-100	32	72	100
SK50-SLA40-100	40	80	100
SK50-SLA50-125	50	100	125

DIN69871

Оправка фрезерная для МК по DIN6383

G6.3



Артикул	MT	D	L
SK30-MTA1-50	1	25	50
SK30-MTA2-65	2	32	50
SK30-MTA3-80	3	40	75
SK40-MTA1-50	1	25	50
SK40-MTA2-50	2	32	50
SK40-MTA3-70	3	40	70
SK40-MTA4-95	4	48	95
SK50-MTA1-45	1	25	45
SK50-MTA2-60	2	32	60
SK50-MTA3-65	3	40	65
SK50-MTA4-95	4	48	95
SK50-MTA5-105	5	63	105

DIN69871

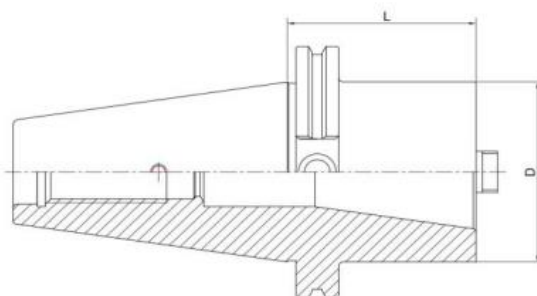
Оправка фрезерная для МК с резьбой по DIN6383

G6.3

Артикул	MT	D	L
SK40-MTB1-50	1	25	50
SK40-MTB2-60	2	32	60
SK40-MTB4-90	3	48	90
SK50-MTB1-45	1	25	45
SK50-MTB2-60	2	32	60
SK50-MTB3-65	3	40	65
SK50-MTB4-70	4	48	70
SK50-MTB5-100	5	63	100

DIN69871

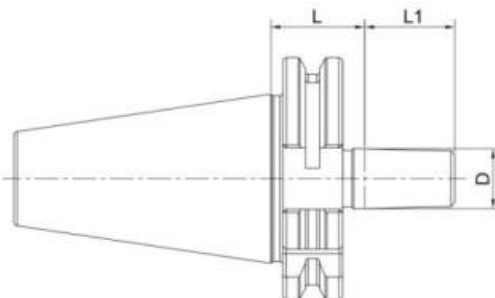
Оправка фрезерная для крепления SK-оправок (переходник)



Артикул	D	L
SK40-SK30-50	51	50
SK40-SK40-100	63	100
SK50-SK40-70	63	70
SK50-SK500-120	97	120

DIN69871

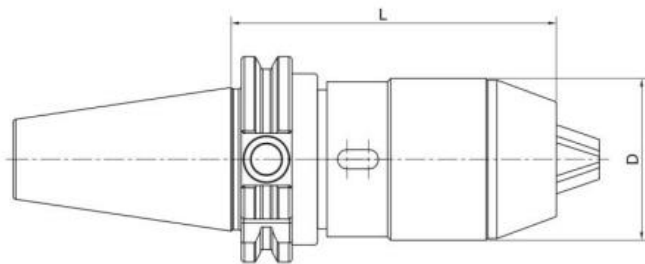
Оправка фрезерная по DIN 238, для сверлильных патронов



Артикул	D	L	L1
SK30-B12	B12	18.5	25
SK30-B16	B16	24	25
SK40-B12	B12	18.5	25
SK40-B16	B16	24	25
SK40-B18	B18	32	25
SK50-B12	B12	18.5	25
SK50-B16	B16	24	25
SK50-B18	B18	32	25

DIN69871

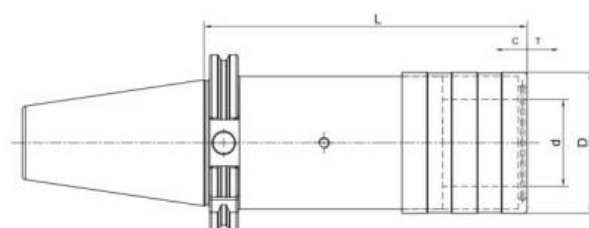
Сверлильный патрон



Артикул	D	L	Диапазон зажима
SK30-APU8-80	38	80	1-8
SK30-APU13-120	48	120	1-13
SK30-APU16-130	53	130	3-16
SK40-APU8-75	38	75	1-8
SK40-APU13-100	48	700	1-13
SK40-APU16-110	53	110	3-16
SK50-APU8-75	38	75	1-8
SK50-APU13-100	48	100	1-13
SK50-APU16-105	53	105	3-16

DIN69871

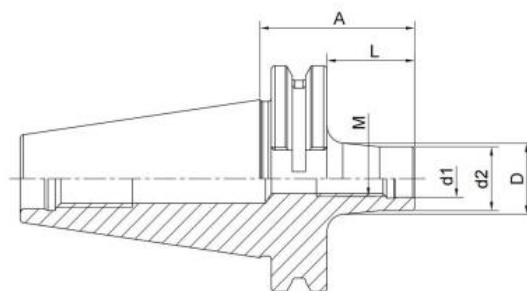
Патроны резьбонарезные под быстросменные вставки



Артикул	Модель цанги	d	D	L	T
SK30-TC312-65	1	19	36	65	7.5
SK30-TC820-88	2	31	54	88	12.5
SK40-TC312-59	1	19	36	59	7.5
SK40-TC820-97	2	31	54	97	12.5
SK40-TC1433-140	3	48	78	156	22
SK50-TC312-63	1	19	36	63	7.5
SK50-TC820-97	2	31	54	97	12.5
SK50-TC1433-140	3	48	78	140	22

DIN69871

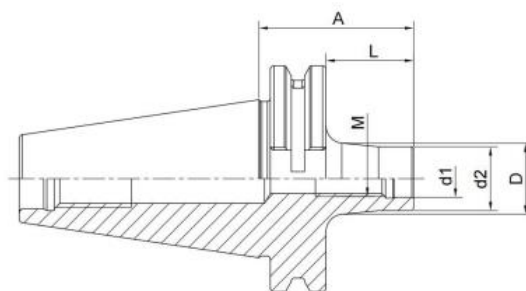
Патроны для модульных фрезерных головок



Артикул	M	d1	d2	A	L	D
SK40-BOM08-44	8	8.5	14.5	44	25	15
SK40-BOM08-69	8	8.5	14.5	69	50	23
SK40-BOM08-94	8	8.5	14.5	94	75	23
SK40-BOM08-119	8	8.5	14.5	119	100	25
SK40-BOM10-24	10	10.5	18	24	5	18
SK40-BOM10-44	10	10.5	18	44	25	20
SK40-BOM10-69	10	10.5	18	69	50	23
SK40-BOM10-94	10	10.5	18	94	75	28
SK40-BOM10-119	10	10.5	18	119	100	32
SK40-BOM10-169	10	10.5	18	169	150	36.5
SK40-BOM12-24	12	12.5	21	24	5	21
SK40-BOM12-44	12	12.5	21	44	25	24
SK40-BOM12-69	12	12.5	21	69	50	24
SK40-BOM12-94	12	12.5	21	94	75	31
SK40-BOM12-119	12	12.5	21	119	100	33
SK40-BOM12-144	12	12.5	21	144	125	36
SK40-BOM12-169	12	12.5	21	169	150	40
SK40-BOM16-24	16	17	29	24	5	29
SK40-BOM16-44	16	17	29	44	25	29
SK40-BOM16-69	16	17	29	69	50	34
SK40-BOM16-94	16	17	29	94	75	34
SK40-BOM16-119	16	17	29	119	100	36
SK40-BOM16-144	16	17	29	144	125	40
SK40-BOM16-169	16	17	29	169	150	42.5

DIN69871

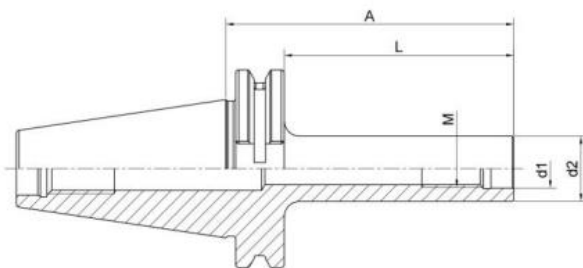
Патроны для модульных фрезерных головок



Артикул	M	d1	d2	A	L	D
SK50-BOM08-69	8	8.5	14.5	69	50	23
SK50-BOM08-119	8	8.5	14.5	119	100	25
SK50-BOM08-169	8	8.5	14.5	169	150	30
SK50-BOM10-69	10	10.5	18	69	50	23
SK50-BOM10-119	10	10.5	18	119	100	32
SK50-BOM10-169	10	10.5	18	169	150	36.5
SK50-BOM12-69	12	12.5	21	69	50	24
SK50-BOM12-119	12	12.5	21	119	100	33
SK50-BOM12-169	12	12.5	21	169	150	40
SK50-BOM16-69	16	17	29	69	50	34
SK50-BOM16-119	16	17	29	119	100	36
SK50-BOM16-169	16	17	29	169	150	42.5

DIN69871

Патроны для модульных фрезерных головок (Цилиндрические)



Артикул	M	d1	d2	A	L
SK40-M10-119	10	10.5	18	119	100
SK40-M10-169	10	10.5	18	169	150
SK40-M12-119	12	12.5	21	119	100
SK40-M12-144	12	12.5	21	144	125
SK40-M12-169	12	12.5	21	169	150
SK40-M16-119	16	17	29	119	100
SK40-M16-144	16	17	29	144	125
SK40-M16-169	16	17	29	169	150
SK50-M10-119	10	10.5	18	119	100
SK50-M10-169	10	10.5	18	169	150
SK50-M12-119	12	12.5	21	119	100
SK50-M12-169	12	12.5	21	169	150
SK50-M16-119	16	17	29	119	100
SK50-M16-169	16	17	29	169	150

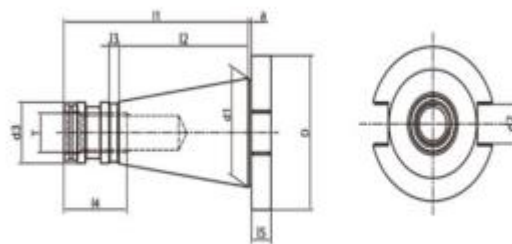
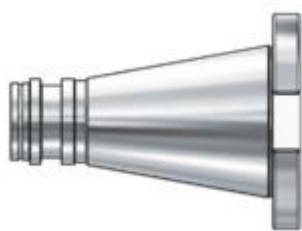
DIN69871

Контрольная оправка



Артикул	D	L
SK30-32-250	32	250
SK40-40-300	40	300
SK50-50-300	50	300

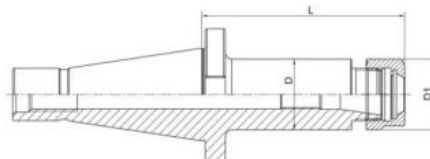
DIN2080



Размер	D	d1	d2	d3	a	l1	l2	l3	l4	l5	T
NT30	50	31.75	16.1	17.04	1.6	68.4	48.4	3	24	8	M12
NT40	63	44.45	16.1	24.92	1.6	93.4	65.4	5	32	10	M16
NT50	97.5	69.85	25.7	39.19	3.5	101.8	101.9	8	47	12	M24

DIN2080

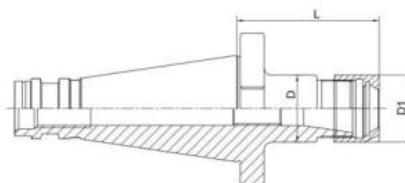
Цанговый патрон ER



Артикул	D	D1	L	Цанга
NT30-ER16A-50	28	28	50	1-10
NT30-ER20A-50	34	34	50	1-13
NT30-ER25-50	42	42	50	2-16
NT30-ER32-50	40	50	50	2-20
NT30-ER40-80	50	63	80	4-26
NT40-ER16A-50	28	28	50	1-10
NT40-ER25-50	42	42	50	1-13
NT40-ER32-60	50	50	60	3-20
NT40-ER40-80	50	63	80	4-26
NT40-ER16A-100	28	28	100	1-10
NT40-ER20A-100	34	34	100	1-13
NT40-ER25-100	42	42	100	2-16
NT40-ER32-100	50	50	100	3-20
NT50-ER32-70	50	50	70	3-20
NT50-ER40-70	63	63	70	2-26
NT50-ER50-90	70	78	90	6-34
NT50-ER16A-100	28	28	100	1-10
NT50-ER20A-100	34	34	100	1-13
NT50-ER32-100	50	50	100	3-20
NT50-ER40-100	63	63	100	4-26

DIN2080

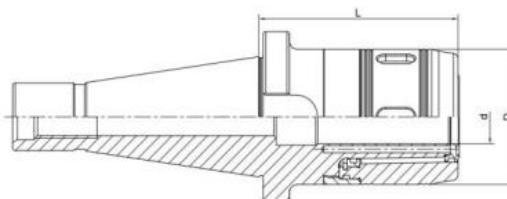
Цанговый патрон ER с мини гайкой



Артикул	D	D1	L	Цанга
NT30-ER16M-70	22	22	70	1-10
NT30-ER20M-70	28	28	70	1-13
NT30-ER25M-70	35	35	70	2-16
NT40-ER16M-60	22	22	60	1-10
NT40-ER20M-60	28	28	60	1-13
NT40-ER25M-60	35	35	60	2-16

DIN2080

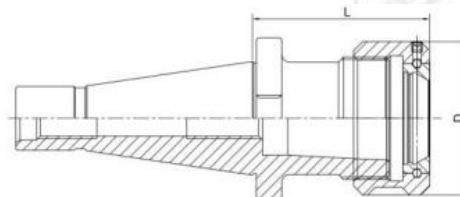
Силовой Патрон



Артикул	D	D	L	Цанга
NT40-MC25-90	25	59	90	C25
NT40-MC32-90	32	70	90	C32
NT40-MC32-105	32	70	105	C32
NT50-MC25-85	25	59	85	C25
NT50-MC32-90	32	70	90	C32
NT50-MC42-95	42	88	95	C42
NT50-MC25-150	25	59	150	C25
NT50-MC32-150	32	70	150	C32
NT50-MC42-150	42	88	150	C42

DIN2080

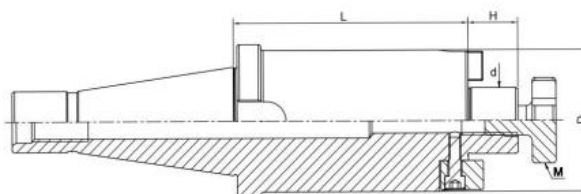
Цанговый патрон OZ



Артикул	D	L	Цанга
NT30-OZ16-50	43	50	2-16
NT30-OZ25-70	60	70	3-25
NT40-OZ16-70	43	70	2-16
NT40-OZ25-70	60	70	3-25
NT40-OZ32-80	72	80	6-32
NT50-OZ25-70	60	70	3-25
NT50-OZ32-80	72	80	6-32

DIN2080

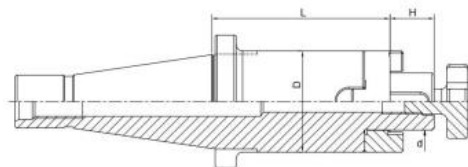
Оправка для насадных фрез



Артикул	d	D	L	122	M
NT30-FMB16-30	16	38	30	16	M8
NT30-FMB22-30	22	48	30	18	M10
NT30-FMB27-45	27	58	45	20	M12
NT30-FMB32-50	32	78	50	22	M16
NT40-FMB16-30	16	38	30	16	M8
NT40-FMB22-30	22	48	30	18	M10
NT40-FMB27-30	27	58	30	20	M12
NT40-FMB32-30	32	78	30	22	M16
NT40-FMB40-30	40	88	30	25	M16
NT50-FMB16-30	16	38	30	16	M8
NT50-FMB22-35	22	48	35	18	M10
NT50-FMB27-35	27	58	35	20	M12
NT50-FMB32-40	32	78	40	22	M16
NT50-FMB40-40	40	88	40	25	M16

DIN2080

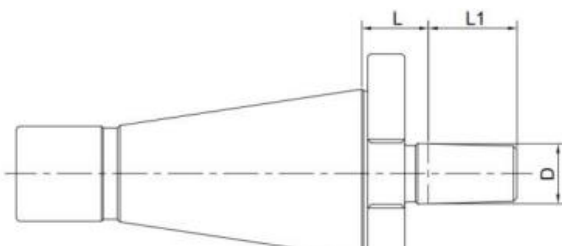
Комбинированная оправка для насадных фрез



Артикул	d	D	L	L1
NT30-SEMC16-35	16	32	35	17
NT30-SEMC22-35	22	40	35	19
NT30-SEMC27-35	27	48	35	21
NT30-SEMC32-50	32	58	50	24
NT40-SEMC16-52	16	32	52	17
NT40-SEMC22-52	22	40	52	19
NT40-SEMC27-52	27	48	52	21
NT40-SEMC32-52	32	58	52	24
NT40-SEMC40-52	40	70	52	27
NT50-SEMC16-55	16	32	55	17
NT50-SEMC22-55	22	40	55	19
NT50-SEMC27-55	27	48	55	21
NT50-SEMC32-55	32	58	55	24
NT50-SEMC40-55	40	70	55	27

DIN2080

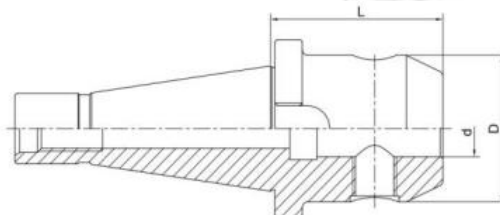
Оправка фрезерная по DIN 238, для сверлильных патронов



Артикул	D	L	L1
NT30-B12	B12	15	18.5
NT30-B16	B16	17	24
NT40-B12	B12	18	18.5
NT40-B16	B16	18	24
NT40-B18	B18	18	32
NT50-B16	B16	20	24
NT50-B18	B18	20	32

DIN2080

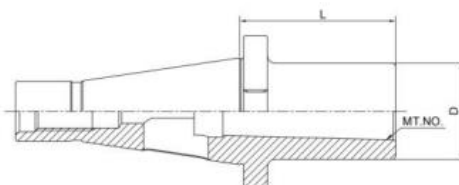
Патрон Weldon



Артикул	d	D	L1
NT30-SLA6-40	6	25	40
NT30-SLA8-40	8	28	40
NT30-SLA10-40	10	35	40
NT30-SLA12-40	12	42	40
NT30-SLA16-50	16	48	50
NT30-SLA18-50	18	50	50
NT30-SLA20-63	20	52	63
NT40-SLA6-50	6	25	50
NT40-SLA8-50	8	28	50
NT40-SLA10-50	10	35	50
NT40-SLA12-50	12	42	50
NT40-SLA14-50	14	44	50
NT40-SLA16-63	16	48	63
NT40-SLA18-63	18	50	63
NT40-SLA20-63	20	52	63
NT40-SLA25-80	25	65	80
NT40-SLA32-80	32	72	80
NT40-SLA40-90	42	80	90
NT50-SLA6-63	6	25	63
NT50-SLA8-63	8	28	63
NT50-SLA10-63	10	35	63
NT50-SLA12-63	12	42	63
NT50-SLA14-63	14	44	63
NT50-SLA16-63	16	48	63
NT50-SLA18-63	18	50	63
NT50-SLA20-63	20	52	63
NT50-SLA25-80	25	65	80
NT50-SLA32-80	32	75	80
NT50-SLA40-90	40	80	90

DIN2080

Оправка фрезерная для МК по DIN6383



Артикул	MT	D	L
NT30-MTA1-50	1	25	50
NT30-MTA2-50	2	32	50
NT30-MTA3-75	3	40	75
NT40-MTA1-50	1	25	50
NT40-MTA2-50	2	32	50
NT40-MTA3-65	3	40	65
NT40-MTA4-95	4	48	95
NT50-MTA1-45	1	25	45
NT50-MTA2-60	2	32	60
NT50-MTA3-65	3	40	65
NT50-MTA4-70	4	48	70
NT50-MTA5-105	5	63	105

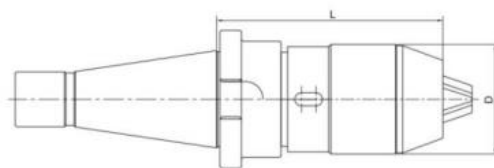
DIN2080

Оправка фрезерная для МК с резьбой по DIN6383

Артикул	MT	D	L
NT30-MTB1-45	1	25	4
NT30-MTB2-60	2	32	60
NT30-MTB3-70	3	40	70
NT40-MTB1-50	1	25	50
NT40-MTB2-60	2	32	50
NT40-MTB3-70	3	40	65
NT40-MTB4-95	4	48	95
NT50-MTB1-60	1	25	60
NT50-MTB2-60	2	32	60
NT50-MTB3-65	3	40	65
NT50-MTB4-65	4	48	65
NT50-MTB5-120	5	63	120

DIN2080

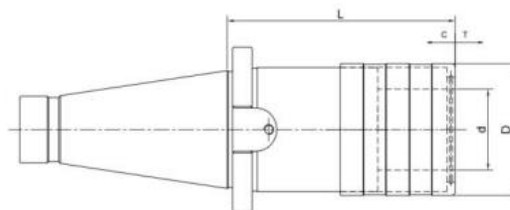
Сверлильный патрон



Артикул	D	L	Диапазон зажима
NT30-APU08-80	38	80	1-8
NT30-APU13-100	48	100	1-13
NT40-APU08-85	38	85	1-8
NT40-APU12-110	48	110	1-13
NT40-APU16-130	53	130	3-16
NT50-APU08-95	38	90	1-8
NT50-APU13-120	48	120	1-13
NT50-APU16-130	53	130	3-16

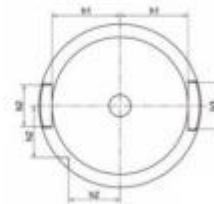
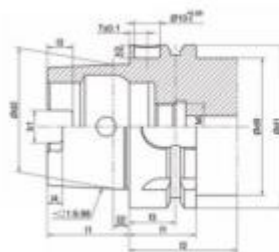
DIN2080

Патроны резьбонарезные под быстросменные вставки



Артикул	Модель цанги	d	D	L	T
NT30-TC312-55	1	19	36	55	7.5
NT30-TC820-86	2	31	53	86	12.5
NT40-TC312-55	1	19	36	55	7.5
NT40-TC820-86	2	31	53	86	12.5
NT40-TC1433-132	3	48	78	132	22
NT50-TC312-62	1	19	36	62	7.5
NT50-TC820-90	2	31	53	90	12.5
NT50-TC1433-117	3	48	78	117	22

HSK-A

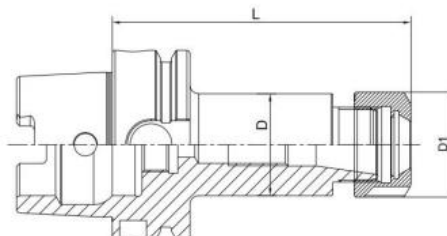


Размер	d1	d2	d9	l1	l2	l3	l4	f1	f2	f3	h1	h2	h3	b1	b2	b3
HSK25A	25	19.006	20	13	2.5	4	2	10	20	4.5	10	7.5	5.1	6.05	6	7
HSK32A	32	24.007	26	16	3.2	5	3	20	35	16	13	9.5	5.4	7.05	7	9
HSK40A	40	30.007	34	20	4	6	3.5	20	35	16	17	12	5.2	8.05	9	11
HSK50A	50	38.009	42	25	5	7.5	4.5	26	42	18	21	15.5	5.1	10.54	12	14
HSK63A	63	48.010	53	32	6.3	10	6	26	42	18	26.5	20	5.0	12.54	16	18
HSK80A	80	60.012	68	40	8	12	8	26	42	18	34	25	4.9	16.04	18	20
HSK100A	100	75.013	88	50	10	15	10	29	45	20	44	31.5	4.9	20.02	20	22

HSK-A

Цанговый патрон ER

G6.3

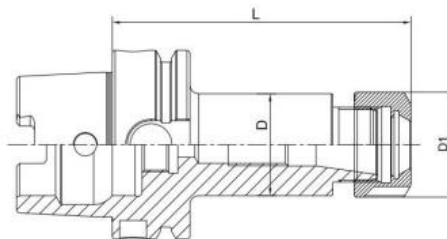


Артикул	D	D1	L	Цанга
HSK32A-ER16-60	28	28	60	1-10
HSK32A-ER20-60	35	34	60	1-13
HSK32A-ER25-70	42	42	70	2-16
HSK32A-ER32-80	50	50	80	3-20
HSK40A-ER16-70	28	28	70	1-10
HSK40A-ER20-70	35	35	70	1-13
HSK40A-ER25-80	42	42	80	2-16
HSK40A-ER32-80	50	50	80	3-20
HSK50A-ER16-80	28	28	80	1-10
HSK50A-ER20-80	35	35	80	1-13
HSK50A-ER25-80	42	42	80	2-16
HSK50A-ER32-100	50	50	100	3-20
HSK63A-ER16-80	32	32	80	1-10
HSK63A-ER20-80	35	35	80	1-13
HSK63A-ER25-80	42	42	80	2-16
HSK63A-ER32-80	50	50	80	3-20
HSK63A-ER40-80	63	63	80	4-26
HSK63A-ER16-100	32	32	100	1-10
HSK63A-ER20-100	35	34	100	1-13
HSK63A-ER25-100	42	42	100	2-16
HSK63A-ER32-100	50	50	100	3-20
HSK63A-ER40-100	63	63	100	4-26
HSK63A-ER16-160	32	32	160	1-10
HSK63A-ER20-160	35	35	160	1-13
HSK63A-ER25-160	42	42	160	2-16
HSK63A-ER32-160	50	50	160	3-20
HSK63A-ER40-160	63	63	160	4-26
HSK63A-ER16-200	32	32	200	1-10
HSK63A-ER20-200	35	35	200	1-13
HSK63A-ER25-200	42	42	200	2-16
HSK63A-ER32-200	50	50	200	3-20
HSK63A-ER40-200	63	63	200	4-26

HSK-A

Цанговый патрон ER

G6.3

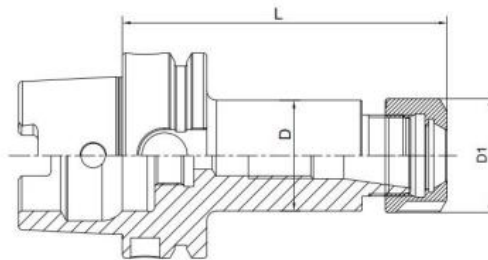


Артикул	D	D1	L	Цанга
HSK100A-ER16-100	32	32	100	1-10
HSK100A-ER20-100	35	35	100	1-13
HSK100A-ER25-100	42	42	100	2-16
HSK100A-ER32-100	50	50	100	3-20
HSK100A-ER40-120	63	63	120	4-26
HSK100A-ER16-160	32	32	160	1-10
HSK100A-ER20-160	35	35	160	1-13
HSK100A-ER25-160	42	42	160	2-16
HSK100A-ER32-160	50	50	160	3-20
HSK100A-ER40-160	63	63	160	4-26
HSK100A-ER16-200	32	32	200	1-10
HSK100A-ER20-200	35	35	200	1-13
HSK100A-ER25-200	42	42	200	2-16
HSK100A-ER32-200	50	50	200	3-20
HSK100A-ER40-200	63	63	200	4-26

HSK-A

Цанговый патрон ER с мини гайкой

G6.3

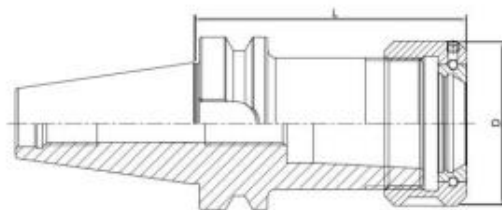


Артикул	D	D1	L	Цанга
HSK32A-ER11M-60	16	16	60	1-7
HSK32A-ER16M-60	22	22	60	1-10
HSK32A-ER20M-60	28	28	60	1-13
HSK40A-ER11M-60	16	16	60	1-7
HSK40A-ER16M-60	22	22	60	1-10
HSK40A-ER20M-60	28	28	60	1-13
HSK50A-ER11M-70	16	16	70	1-7
HSK50A-ER16M-70	22	22	70	1-10
HSK50A-ER20M-70	28	28	70	1-13
HSK63A-ER11M-100	16	16	100	1-7
HSK63A-ER16M-100	22	22	100	1-10
HSK63A-ER20M-100	28	28	100	1-13
HSK63A-ER25M-100	35	35	100	2-16
HSK63A-ER11M-160	16	16	160	1-7
HSK63A-ER16M-160	22	22	160	1-10
HSK63A-ER20M-160	38	38	160	1-13
HSK63A-ER25M-160	35	35	160	2-16
HSK100A-ER16M-100	22	22	100	1-10
HSK100A-ER20M-100	28	28	100	1-13
HSK100A-ER25M-100	35	35	100	2-16
HSK100A-ER16M-160	22	22	160	1-10
HSK100A-ER20M-160	28	28	160	1-13
HSK100A-ER25M-160	35	35	160	2-16

HSK-A

Цанговый патрон OZ

G6.3

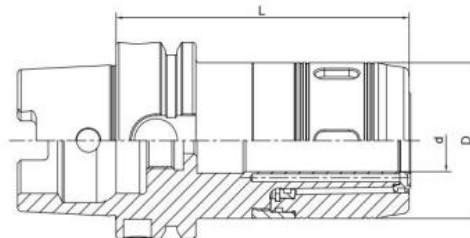


Артикул	D	L	Цанга
HSK50A-OZ16-90	43	90	2-16
HSK50A-OZ25-110	60	110	2-25
HSK63A-OZ16-100	43	100	2-16
HSK63A-OZ25-100	60	100	2-25
HSK63A-OZ32-120	72	120	3-32
HSK100A-OZ16-110	43	110	2-16
HSK100A-OZ25-120	60	120	2-25
HSK100A-OZ32-130	72	130	3-32

HSK-A

Силовой Патрон

G6.3

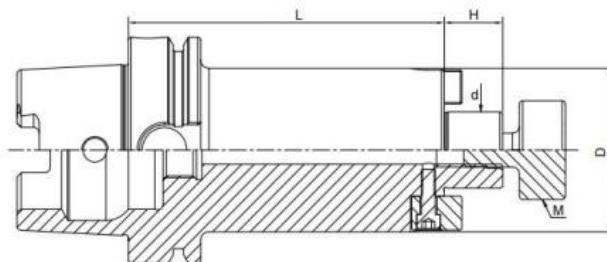


Артикул	d	D	L1	Цанга
HSK50A-MC20-100	20	55	100	C20
HSK50A-MC25-100	25	59	100	C25
HSK50A-MC32-110	32	68	100	C32
HSK63A-MC16-100	16	45	100	C16
HSK63A-MC20-100	20	55	100	C20
HSK63A-MC25-100	25	59	100	C25
HSK63A-MC32-120	32	68	120	C32
HSK63A-MC32-150	32	68	150	C32
HSK63A-MC32-200	32	68	200	C32
HSK100A-MC20-105	20	55	105	C20
HSK100A-MC25-105	25	59	105	C25
HSK100A-MC32-120	32	73	120	C32
HSK100A-MC42-120	42	88	120	C42
HSK100A-MC20-150	20	55	150	C20
HSK100A-MC25-150	25	59	150	C25
HSK100A-MC32-150	32	73	150	C32
HSK100A-MC42-150	42	88	150	C42
HSK100A-MC20-200	20	55	200	C20
HSK100A-MC25-200	25	59	200	C25
HSK100A-MC32-200	32	73	200	C32
HSK100A-MC42-200	42	88	200	C42

HSK-A

Оправка для насадных фрез

G6.3

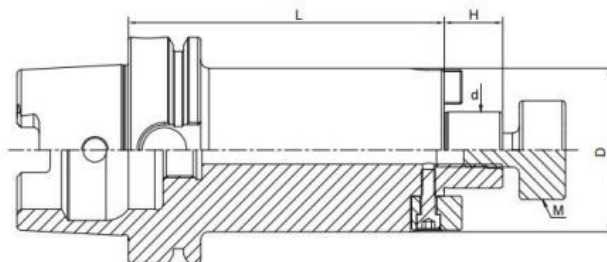


Артикул	d	D	L	H	M
HSK32A-FMB16-45	16	38	16	45	M8
HSK32A-FMB22-50	22	48	18	50	M10
HSK40A-FMB22-50	22	48	18	50	M10
HSK40A-FMB27-55	27	58	20	55	M12
HSK40A-FMB32-60	32	78	22	60	M16
HSK50A-FMB16-50	16	38	16	50	M8
HSK50A-FMB22-60	22	48	18	60	M10
HSK50A-FMB27-60	27	58	20	60	M12
HSK50A-FMB32-60	32	78	22	60	M16
HSK63A-FMB16-50	16	38	16	50	M8
HSK63A-FMB22-50	22	48	18	50	M10
HSK63A-FMB27-60	27	58	20	60	M12
HSK63A-FMB32-60	32	78	22	60	M16
HSK63A-FMB40-60	40	88	25	60	M20
HSK63A-FMB16-100	16	38	16	100	M8
HSK63A-FMB22-100	22	48	18	100	M10
HSK63A-FMB27-100	27	58	20	100	M12
HSK63A-FMB32-100	32	78	22	100	M16
HSK63A-FMB40-100	40	88	25	100	M20
HSK63A-FMB16-160	16	38	16	160	M8
HSK63A-FMB22-160	22	48	18	160	M10
HSK63A-FMB27-160	27	58	20	160	M12
HSK63A-FMB32-160	32	78	22	160	M16
HSK63A-FMB40-160	40	88	25	160	M20

HSK-A

Оправка для насадных фрез

G6.3

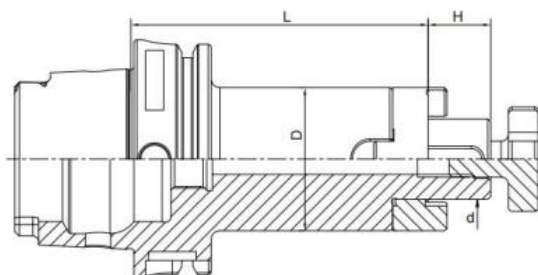


Артикул	D	D	L	H	M
HSK100A-FMB22-70	22	48	18	70	M10
HSK100A-FMB27-70	27	58	22	70	M12
HSK100A-FMB32-60	32	78	22	60	M16
HSK100A-FMB40-60	40	88	25	60	M20
HSK100A-FMB60-70	60	129	25	70	M30
HSK100A-FMB22-100	22	48	18	100	M10
HSK100A-FMB27-100	27	58	20	100	M12
HSK100A-FMB32-100	32	78	22	100	M16
HSK100A-FMB40-100	40	88	25	100	M20
HSK100A-FMB60-100	60	138	25	100	M30
HSK100A-FMB22-160	22	48	18	160	M10
HSK100A-FMB27-160	27	58	20	160	M12
HSK100A-FMB32-160	32	78	22	160	M16
HSK100A-FMB40-160	40	88	25	160	M20
HSK100A-FMB60-160	60	138	25	160	M30

HSK-A

Комбинированная оправка для насадных фрез

G6.3

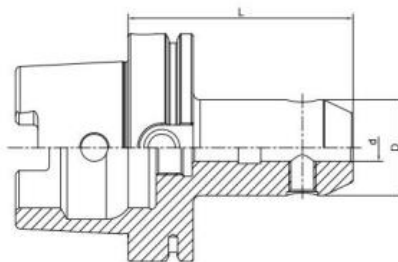


Артикул	d	D	L	H
HSK32A-SEMC16-55	16	32	55	17
HSK32A-SEMC22-55	22	40	55	19
HSK32A-SEMC27-65	27	48	65	21
HSK32A-SEMC32-65	32	58	65	24
HSK40A-SEMC16-50	16	32	50	17
HSK40A-SEMC22-50	22	40	50	19
HSK40A-SEMC27-65	27	48	65	21
HSK40A-SEMC32-65	32	58	65	24
HSK50A-SEMC16-50	16	32	50	17
HSK50A-SEMC22-50	22	40	50	19
HSK50A-SEMC27-65	27	48	65	21
HSK50A-SEMC32-65	32	58	65	24
HSK63A-SEMC16-60	16	32	60	17
HSK63A-SEMC22-60	22	40	60	19
HSK63A-SEMC27-60	27	48	60	21
HSK63A-SEMC32-60	32	58	60	24
HSK63A-SEMC40-70	40	70	70	27
HSK63A-SEMC16-100	16	32	100	17
HSK63A-SEMC22-100	22	40	100	19
HSK63A-SEMC27-100	27	48	100	21
HSK63A-SEMC32-100	32	58	100	24
HSK63A-SEMC40-100	40	70	100	27
HSK100A-SEMC16-60	16	32	60	17
HSK100A-SEMC22-60	22	40	60	19
HSK100A-SEMC27-60	27	48	60	21
HSK100A-SEMC32-60	32	58	60	24
HSK100A-SEMC40-70	40	70	70	27

HSK-A

Патрон Weldon

G6.3

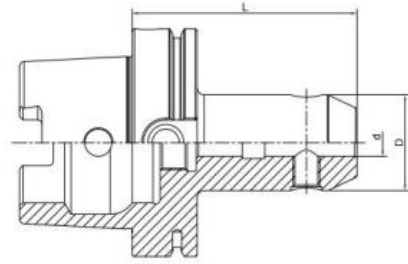


Артикул	d	D	L
HSK32A-SLA08-60	8	28	60
HSK32A-SLA10-65	10	35	65
HSK32A-SLA12-70	12	42	70
HSK32A-SLA14-75	14	44	75
HSK32A-SLA16-75	16	48	75
HSK32A-SLA20-90	20	52	90
HSK40A-SLA06-60	6	25	60
HSK40A-SLA08-60	8	38	60
HSK40A-SLA10-60	10	35	60
HSK40A-SLA12-70	12	42	7
HSK40A-SLA14-75	14	44	75
HSK40A-SLA16-75	16	48	75
HSK40A-SLA18-85	18	50	85
HSK40A-SLA20-85	20	52	85
HSK40A-SLA25-95	25	60	95
HSK40A-SLA32-105	32	60	105
HSK50A-SLA06-65	6	25	65
HSK50A-SLA08-65	8	28	65
HSK50A-SLA10-65	10	35	65
HSK50A-SLA12-80	12	42	80
HSK50A-SLA14-80	14	44	80
HSK50A-SLA16-80	16	48	80
HSK50A-SLA18-80	18	50	80
HSK50A-SLA20-80	20	52	80
HSK50A-SLA25-110	25	60	110
HSK50A-SLA32-110	32	60	110

HSK-A

Патрон Weldon

G6.3

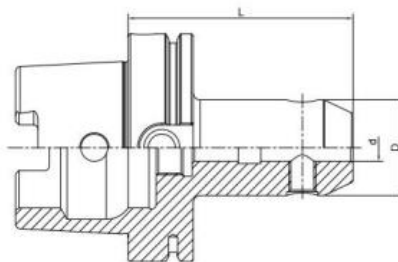


Артикул	d	D	L
HSK63A-SLA06-65	6	25	65
HSK63A-SLA08-65	8	28	65
HSK63A-SLA10-65	10	35	65
HSK63A-SLA12-80	12	42	80
HSK63A-SLA14-80	14	44	80
HSK63A-SLA16-80	16	48	80
HSK63A-SLA20-80	20	52	80
HSK63A-SLA25-110	25	65	110
HSK63A-SLA32-110	32	72	100
HSK63A-SLA40-125	40	80	125
HSK63A-SLA06-100	06	25	100
HSK63A-SLA08-100	08	28	100
HSK63A-SLA10-100	10	35	100
HSK63A-SLA14-100	14	44	100
HSK63A-SLA16-100	16	48	100
HSK63A-SLA18-100	18	50	100
HSK63A-SLA20-100	20	52	100
HSK63A-SLA06-150	6	25	150
HSK63A-SLA08-150	8	28	150
HSK63A-SLA10-150	10	35	150
HSK63A-SLA12-150	12	42	150
HSK63A-SLA14-150	14	44	150
HSK63A-SLA16-150	16	48	150
HSK63A-SLA18-150	18	50	150
HSK63A-SLA20-150	20	52	150
HSK63A-SLA25-150	25	72	150
HSK63A-SLA32-150	32	80	150

HSK-A

Патрон Weldon

G6.3

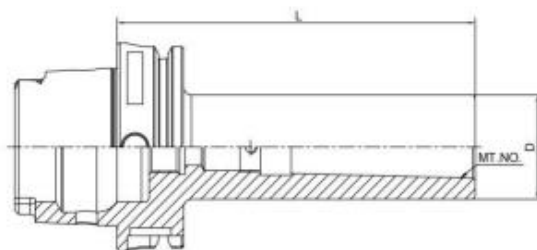


Артикул	d	D	L
HSK100A-SLA08-80	8	28	80
HSK100A-SLA10-80	10	35	80
HSK100A-SLA12-80	12	42	80
HSK100A-SLA14-80	14	44	80
HSK100A-SLA16-100	16	48	100
HSK100A-SLA18-100	18	50	100
HSK100A-SLA20-100	20	52	100
HSK100A-SLA25-100	25	65	100
HSK100A-SLA32-100	32	72	100
HSK100A-SLA40-120	40	80	120
HSK100A-SLA08-150	8	28	150
HSK100A-SLA10-150	10	35	150
HSK100A-SLA12-150	12	42	150
HSK100A-SLA14-150	14	44	150
HSK100A-SLA16-150	16	44	150
HSK100A-SLA18-150	18	48	150
HSK100A-SLA20-150	20	52	150
HSK100A-SLA25-150	25	65	150
HSK100A-SLA32-150	32	72	150
HSK100A-SLA40-150	40	80	150

HSK-A

Оправка фрезерная для МК по DIN6383

G6.3



Артикул	MT	D	L
HSK50A-MTB1-100	1	25	100
HSK50A-MTB2-120	2	32	120
HSK50A-MTB3-140	3	40	140
HSK63A-MTB1-100	1	25	100
HSK63A-MTB2-120	2	32	120
HSK63A-MTB3-140	3	40	140
HSK63A-MTB4-160	4	48	160
HSK100A-MTB1-110	1	25	110
HSK100A-MTB2-120	2	32	120
HSK100A-MTB3-150	3	40	150
HSK100A-MTB4-170	4	48	170
HSK100A-MTB5-200	5	63	200

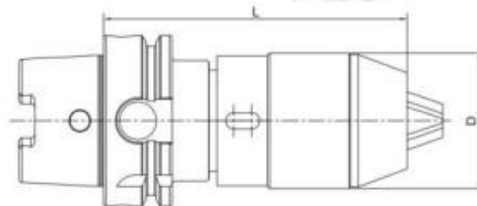
HSK-A

Оправка фрезерная для МК с резьбой по DIN6383

Артикул	MT	D	L
HSK50A-MTA1-100	1	25	100
HSK50A-MTA2-120	2	32	120
HSK50A-MTA3-140	3	40	140
HSK63A-MTA1-100	1	25	100
HSK63A-MTA2-120	2	32	120
HSK63A-MTA3-140	3	40	140
HSK63A-MTA4-160	4	48	160
HSK100A-MTA1-110	1	25	110
HSK100A-MTA2-120	2	32	120
HSK100A-MTA3-150	3	40	150
HSK100A-MTA4-170	4	48	170
HSK100A-MTA5-200	5	63	200

HSK-A

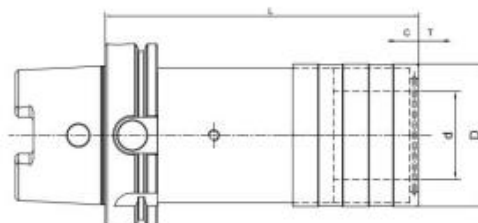
Сверлильный патрон



Артикул	D	L	Диапазон зажима
HSK50A-APU08-120	38	120	1-8
HSK50A-APU12-135	48	135	1-13
HSK50A-APU16-140	53	140	3-16
HSK63A-APU08-120	38	120	1-8
HSK63A-APU13-150	48	150	1-13
HSK63A-APU16-155	53	155	3-16
HSK100A-APU13-155	48	155	1-13
HSK100A-APU16-160	53	160	3-16

HSK-A

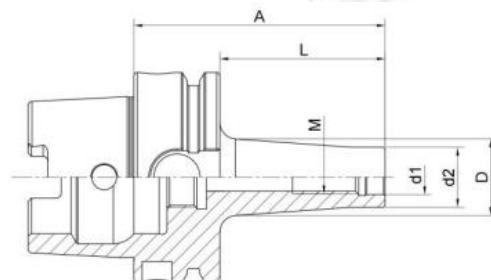
Патроны резьбонарезные под быстросменные вставки



Артикул	Модель цанги	d	D	L	T
HSK50A-TC312-72	1	19	36	72	7.5
HSK50A-TC820-110	2	31	53	110	12.5
HSK63A-TC312-102	1	19	36	102	7.5
HSK63A-TC820-140	2	31	53	140	12.5
HSK63A-TC1433-141	3	48	78	141	22
HSK100A-TC312-112	1	19	36	112	7.5
HSK100A-TC820-148	2	31	53	148	12.5
HSK100A-TC1433-144	3	48	78	144	22

HSK-A

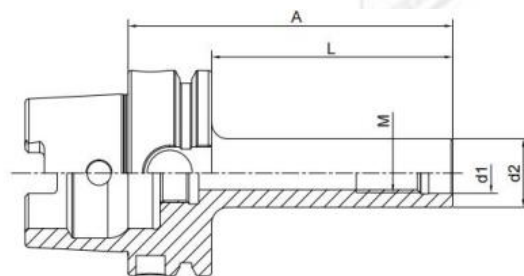
Патроны для модульных фрезерных головок



Артикул	M	d1	d2	A	L	D
HSK63A-BOM08-51	8	8.5	14.5	51	25	15
HSK63A-BOM08-76	8	8.5	14.5	76	50	23
HSK63A-BOM08-101	8	8.5	14.5	101	75	23
HSK63A-BOM10-51	10	10.5	18	51	25	20
HSK63A-BOM10-76	10	10.5	18	76	50	23
HSK63A-BOM10-126	10	10.5	18	126	100	32
HSK63A-BOM10-176	10	10.5	18	176	150	36.5
HSK63A-BOM12-51	12	12.5	21	51	25	24
HSK63A-BOM12-76	12	12.5	21	76	50	34
HSK63A-BOM12-101	12	12.5	21	101	75	31
HSK63A-BOM12-126	12	12.5	21	126	100	33
HSK63A-BOM12-176	12	12.5	21	176	150	40
HSK63A-BOM16-51	16	17	29	51	25	29
HSK63A-BOM16-76	16	17	29	76	50	34
HSK63A-BOM16-101	16	17	29	101	75	34
HSK63A-BOM16-126	16	17	29	126	100	36
HSK63A-BOM16-176	16	17	29	176	150	42.5
HSK100A-BOM08-79	8	8.5	14.5	79	50	23
HSK100A-BOM10-79	10	10.5	18	79	50	23
HSK100A-BOM10-129	10	10.5	18	129	100	32
HSK100A-BOM10-179	10	10.5	18	179	150	36.5
HSK100A-BOM12-79	12	12.5	21	79	50	24
HSK100A-BOM12-129	12	12.5	21	129	100	33
HSK100A-BOM12-179	12	12.5	21	179	150	40
HSK100A-BOM16-79	16	17	29	79	50	34
HSK100A-BOM16-129	16	17	29	129	100	36
HSK100A-BOM16-179	16	17	29	179	150	42.5

HSK-A

Патроны для модульных фрезерных головок (Цилиндрические)



Артикул	M	d1	d2	A	L
HSK63A-M10-126	10	10.5	18	126	100
HSK63A-M10-176	10	10.5	18	176	150
HSK63A-M12-101	12	12.5	21	101	75
HSK63A-M12-126	12	12.5	21	126	100
HSK63A-M12-176	12	12.5	21	176	150
HSK63A-M16-101	16	17	29	101	75
HSK63A-M16-126	16	17	29	126	100
HSK63A-M16-176	16	17	29	176	150
HSK100A-M10-129	10	10.5	18	129	100
HSK100A-M10-179	10	10.5	18	179	150
HSK100A-M12-126	12	12.5	21	126	100
HSK100A-M12-179	12	12.5	21	179	150
HSK100A-M16-129	16	17	29	129	100
HSK100A-M16-179	16	17	29	179	150

HSK-A

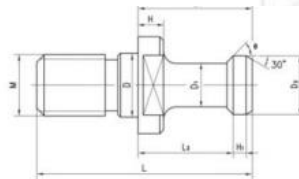
Контрольная оправка



Артикул	D	L
HSK32A-25-180	25	180
HSK40A-25-180	25	180
HSK50A-32-200	32	200
HSK63A-40-300	40	300
HSK80A-50-300	50	300
HSK100A-50-300	50	300

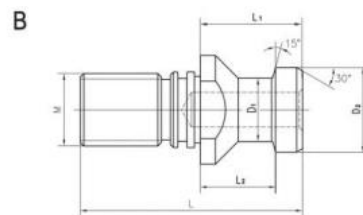
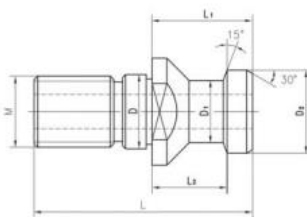
Аксессуары

Штрель MAS403



Артикул	D	D1	D2	M	L	L1	L2	H	е
LDB-P30T-45	12.5	7	11	M12	43	23	18	5	45
LDB-P30T-60	12.5	7	11	M12	43	23	18	5	60
LDB-P30T-90	12.5	7	11	M12	43	23	18	5	90
LDB-P40T-45	17	10	15	M16	60	35	28	6	45
LDB-P40T-60	17	10	15	M16	60	35	28	6	60
LDB-P40T-90	17	10	15	M16	60	35	28	6	90
LDB-P50T-45	25	17	23	M24	85	45	35	10	45
LDB-P50T-60	25	17	23	M24	85	45	35	10	60
LDB-P50T-90	25	17	23	M24	85	45	35	10	90

Штрель DIN69872



Артикул	D	D1	D2	M	L	L1	L2
SK-30A	13	9	13	M12	44	24	19
SK-40A	17	14	19	M16	54	26	20
SK-50A	25	21	28	M24	74	34	25
SK-30B	13	9	13	M12	44	24	19
SK-40B	17	14	19	M16	54	26	20
SK-50B	25	21	28	M24	74	34	25

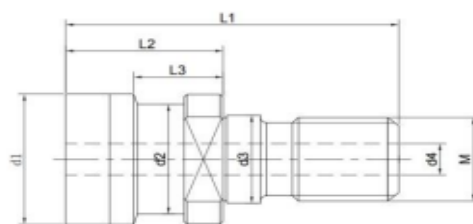
Тип А-со сквозным отверстием для подвода СОЖ

Тип В-без сквозного отверстия

Аксессуары

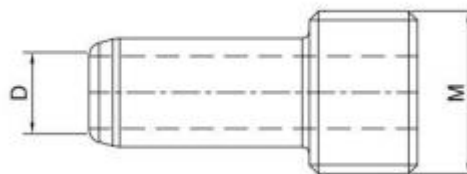
Штрель DIN2080

Stud



Артикул	M	d1	d2	d3	d4	l3	l2	l1
NT40	M16	25	21.1	17	7	13.6	25	53
NT50	M24	39.29	32	25	7	13.3	25.1	63

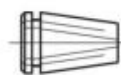
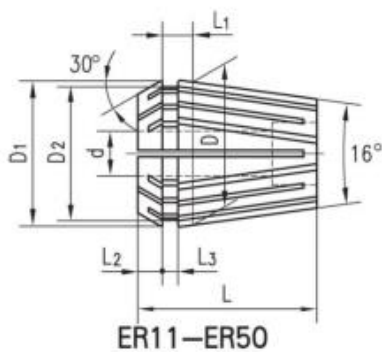
Трубка для подачи СОЖ HSK



Артикул	d	D	L
HSK32	6	M10X1	26
HSK40	8	M12X1	29.5
HSK50	10	M16X1	33
HSK63	12	M18X1	34.5
HSK80	14	M20X1.5	40
HSK100	16	M24X1.5	44.5

Аксессуары

Цанги ER

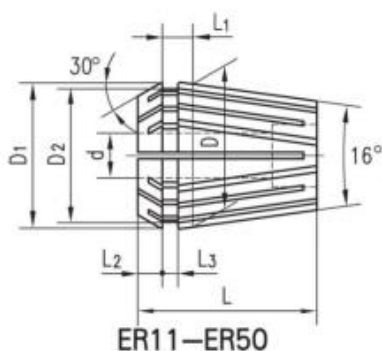


ER8

Артикул	d	D	D1	D2	L	L1	L2	L3	Точность
ER11-1.0	1.0	11.5	11.5	9.5	18	3.8	2.5	2	0.01
ER11-1.5	1.5	11.5	11.5	9.5	18	3.8	2.5	2	0.01
ER11-2.0	2.0	11.5	11.5	9.5	18	3.8	2.5	2	0.01
ER11-2.5	2.5	11.5	11.5	9.5	18	3.8	2.5	2	0.01
ER11-3.0	3.0	11.5	11.5	9.5	18	3.8	2.5	2	0.01
ER11-3.5	3.5	11.5	11.5	9.5	18	3.8	2.5	2	0.01
ER11-4.5	4.5	11.5	11.5	9.5	18	3.8	2.5	2	0.01
ER11-5.0	5.0	11.5	11.5	9.5	18	3.8	2.5	2	0.01
ER11-5.5	5.5	11.5	11.5	9.5	18	3.8	2.5	2	0.01
ER11-6.0	6.0	11.5	11.5	9.5	18	3.8	2.5	2	0.01
ER11-6.5	6.5	11.5	11.5	9.5	18	3.8	2.5	2	0.01
ER11-7.0	7.0	11.5	11.5	9.5	18	3.8	2.5	2	0.01
ER16-1.0	1.0	16	17	13.8	27.5	6.26	4.0	2.7	0.01
ER16-2.0	2.0	16	17	13.8	27.5	6.26	4.0	2.7	0.01
ER16-3.0	3.3	16	17	13.8	27.5	6.26	4.0	2.7	0.01
ER16-4.0	4.0	16	17	13.8	27.5	6.26	4.0	2.7	0.01
ER16-5.0	5.0	16	17	13.8	27.5	6.26	4.0	2.7	0.01
ER16-6.0	6.0	16	17	13.8	27.5	6.26	4.0	2.7	0.01
ER16-7.0	7.0	16	17	13.8	27.5	6.26	4.0	2.7	0.01
ER16-8.0	8.0	16	17	13.8	27.5	6.26	4.0	2.7	0.01
ER16-9.0	9.0	16	17	13.8	27.5	6.26	4.0	2.7	0.01
ER16-10.0	10.0	16	17	13.8	27.5	6.26	4.0	2.7	0.01
ER20-1.0	1.0	20	21	17.4	31.5	6.36	4.8	2.8	0.01
ER20-2.0	2.0	20	21	17.4	31.5	6.36	4.8	2.8	0.01
ER20-3.0	3.3	20	21	17.4	31.5	6.36	4.8	2.8	0.01
ER20-4.0	4.0	20	21	17.4	31.5	6.36	4.8	2.8	0.01
ER20-5.0	5.0	20	21	17.4	31.5	6.36	4.8	2.8	0.01
ER20-6.0	6.0	20	21	17.4	31.5	6.36	4.8	2.8	0.01
ER20-7.0	7.0	20	21	17.4	31.5	6.36	4.8	2.8	0.01
ER20-8.0	8.0	20	21	17.4	31.5	6.36	4.8	2.8	0.01
ER20-9.0	9.0	20	21	17.4	31.5	6.36	4.8	2.8	0.01
ER20-10.0	10.0	20	21	17.4	31.5	6.36	4.8	2.8	0.01
ER20-11.0	11.0	20	21	17.4	31.5	6.36	4.8	2.8	0.01
ER20-12.0	12.0	20	21	17.4	31.5	6.36	4.8	2.8	0.01
ER20-13.0	13.0	20	21	17.4	31.5	6.36	4.8	2.8	0.01

Аксессуары

Цанги ER

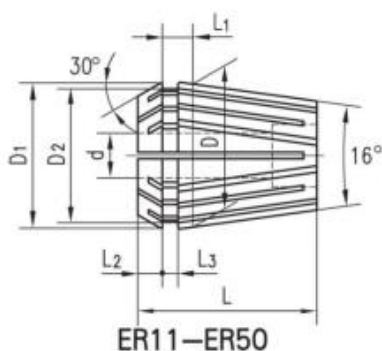


ER8

Артикул	d	D	D1	D2	L	L1	L2	L3	Точность
ER25-1.0	1.0	25	36	22	34	6.66	5	3.1	0.01
ER25-2.0	2.0	25	36	22	34	6.66	5	3.1	0.01
ER25-3.0	3.0	25	36	22	34	6.66	5	3.1	0.01
ER25-4.0	4.0	25	36	22	34	6.66	5	3.1	0.01
ER25-5.0	5.0	25	36	22	34	6.66	5	3.1	0.01
ER25-6.0	6.0	25	36	22	34	6.66	5	3.1	0.01
ER25-7.0	7.0	25	36	22	34	6.66	5	3.1	0.01
ER25-8.0	8.0	25	36	22	34	6.66	5	3.1	0.01
ER25-9.0	9.0	25	36	22	34	6.66	5	3.1	0.01
ER25-10.0	10.0	25	36	22	34	6.66	5	3.1	0.01
ER25-11.0	11.0	25	36	22	34	6.66	5	3.1	0.01
ER25-12.0	12.0	25	36	22	34	6.66	5	3.1	0.01
ER25-13.0	13.0	25	36	22	34	6.66	5	3.1	0.01
ER25-14.0	14.0	25	36	22	34	6.66	5	3.1	0.01
ER25-15.0	15.0	25	36	22	34	6.66	5	3.1	0.01
ER25-16.0	16.0	25	36	22	34	6.66	5	3.1	0.01
ER32-2.0	2.0	32	33	29.2	40	7.16	5.5	3.6	0.01
ER32-3.0	3.0	32	33	29.2	40	7.16	5.5	3.6	0.01
ER32-4.0	4.0	32	33	29.2	40	7.16	5.5	3.6	0.01
ER32-5.0	5.0	32	33	29.2	40	7.16	5.5	3.6	0.01
ER32-6.0	6.0	32	33	29.2	40	7.16	5.5	3.6	0.01
ER32-7.0	7.0	32	33	29.2	40	7.16	5.5	3.6	0.01
ER32-8.0	8.0	32	33	29.2	40	7.16	5.5	3.6	0.01
ER32-9.0	9.0	32	33	29.2	40	7.16	5.5	3.6	0.01
ER32-10.0	10.0	32	33	29.2	40	7.16	5.5	3.6	0.01
ER32-11.0	11.0	32	33	29.2	40	7.16	5.5	3.6	0.01
ER32-12.0	12.0	32	33	29.2	40	7.16	5.5	3.6	0.01
ER32-13.0	13.0	32	33	29.2	40	7.16	5.5	3.6	0.01
ER32-14.0	14.0	32	33	29.2	40	7.16	5.5	3.6	0.01
ER32-15.0	15.0	32	33	29.2	40	7.16	5.5	3.6	0.01
ER32-16.0	16.0	32	33	29.2	40	7.16	5.5	3.6	0.01
ER32-17.0	17.0	32	33	29.2	40	7.16	5.5	3.6	0.01
ER32-18.0	18.0	32	33	29.2	40	7.16	5.5	3.6	0.01
ER32-19.0	19.0	32	33	29.2	40	7.16	5.5	3.6	0.01
ER32-20.0	20.0	32	33	29.2	40	7.16	5.5	3.6	0.01

Аксессуары

Цанги ER



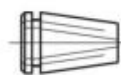
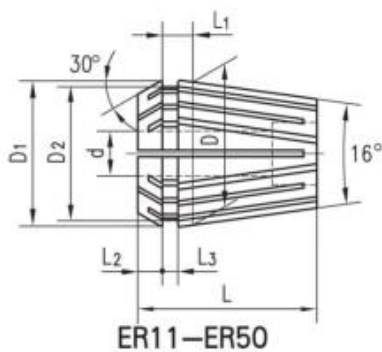
ER8

ER11-ER50

Артикул	d	D	D1	D2	L	L1	L2	L3	Точность
ER40-3.0	3.0	40	41	36.5	46.0	7.66	7.0	4.1	0.01
ER40-4.0	4.0	40	41	36.5	46.0	7.66	7.0	4.1	0.01
ER40-5.0	5.0	40	41	36.5	46.0	7.66	7.0	4.1	0.01
ER40-6.0	6.0	40	41	36.5	46.0	7.66	7.0	4.1	0.01
ER40-7.0	7.0	40	41	36.5	46.0	7.66	7.0	4.1	0.01
ER40-8.0	8.0	40	41	36.5	46.0	7.66	7.0	4.1	0.01
ER40-9.0	9.0	40	41	36.5	46.0	7.66	7.0	4.1	0.01
ER40-10.0	10.0	40	41	36.5	46.0	7.66	7.0	4.1	0.01
ER40-11.0	11.0	40	41	36.5	46.0	7.66	7.0	4.1	0.01
ER40-12.0	12.0	40	41	36.5	46.0	7.66	7.0	4.1	0.01
ER40-13.0	13.0	40	41	36.5	46.0	7.66	7.0	4.1	0.01
ER40-14.0	14.0	40	41	36.5	46.0	7.66	7.0	4.1	0.01
ER40-15.0	15.0	40	41	36.5	46.0	7.66	7.0	4.1	0.01
ER40-16.0	16.0	40	41	36.5	46.0	7.66	7.0	4.1	0.01
ER40-17.0	17.0	40	41	36.5	46.0	7.66	7.0	4.1	0.01
ER40-18.0	18.0	40	41	36.5	46.0	7.66	7.0	4.1	0.01
ER40-19.0	19.0	40	41	36.5	46.0	7.66	7.0	4.1	0.01
ER40-20.0	20.0	40	41	36.5	46.0	7.66	7.0	4.1	0.01
ER40-21.0	21.0	40	41	36.5	46.0	7.66	7.0	4.1	0.01
ER40-22.0	22.0	40	41	36.5	46.0	7.66	7.0	4.1	0.01
ER40-23.0	23.0	40	41	36.5	46.0	7.66	7.0	4.1	0.01
ER40-24.0	24.0	40	41	36.5	46.0	7.66	7.0	4.1	0.01
ER40-25.0	25.0	40	41	36.5	46.0	7.66	7.0	4.1	0.01
ER40-26.0	26.0	40	41	36.5	46.0	7.66	7.0	4.1	0.01

Аксессуары

Цанги ER

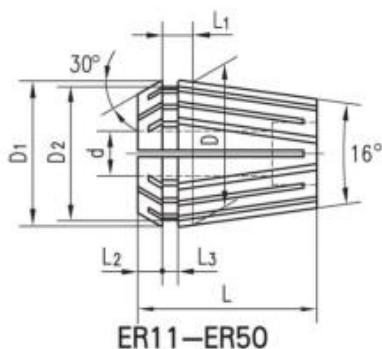


ER8

Артикул	d	D	D1	D2	L	L1	L2	L3	Точность
ER50-6.0	6.0	50	52	46	60	12.6	8.5	5.5	
ER50-7.0	7.0	50	52	46	60	12.6	8.5	5.5	
ER50-8.0	8.0	50	52	46	60	12.6	8.5	5.5	
ER50-9.0	9.0	50	52	46	60	12.6	8.5	5.5	
ER50-10.0	10.0	50	52	46	60	12.6	8.5	5.5	
ER50-11.0	11.0	50	52	46	60	12.6	8.5	5.5	
ER50-12.0	12.0	50	52	46	60	12.6	8.5	5.5	
ER50-13.0	13.0	50	52	46	60	12.6	8.5	5.5	
ER50-14.0	14.0	50	52	46	60	12.6	8.5	5.5	
ER50-15.0	15.0	50	52	46	60	12.6	8.5	5.5	
ER50-16.0	16.0	50	52	46	60	12.6	8.5	5.5	
ER50-17.0	17.0	50	52	46	60	12.6	8.5	5.5	
ER50-18.0	18.0	50	52	46	60	12.6	8.5	5.5	
ER50-19.0	19.0	50	52	46	60	12.6	8.5	5.5	
ER50-20.0	20.0	50	52	46	60	12.6	8.5	5.5	
ER50-21.0	21.0	50	52	46	60	12.6	8.5	5.5	
ER50-22.0	22.0	50	52	46	60	12.6	8.5	5.5	
ER50-23.0	23.0	50	52	46	60	12.6	8.5	5.5	
ER50-24.0	24.0	50	52	46	60	12.6	8.5	5.5	
ER50-25.0	25.0	50	52	46	60	12.6	8.5	5.5	
ER50-26.0	26.0	50	52	46	60	12.6	8.5	5.5	
ER50-27.0	27.0	50	52	46	60	12.6	8.5	5.5	
ER50-28.0	28.0	50	52	46	60	12.6	8.5	5.5	
ER50-29.0	29.0	50	52	46	60	12.6	8.5	5.5	
ER50-30.0	30.0	50	52	46	60	12.6	8.5	5.5	
ER50-31.0	31.0	50	52	46	60	12.6	8.5	5.5	
ER50-32.0	32.0	50	52	46	60	12.6	8.5	5.5	
ER50-33.0	33.0	50	52	46	60	12.6	8.5	5.5	
ER50-34.0	34.0	50	52	46	60	12.6	8.5	5.5	

Аксессуары

Цанги ER -AA (0,008)

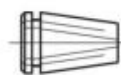
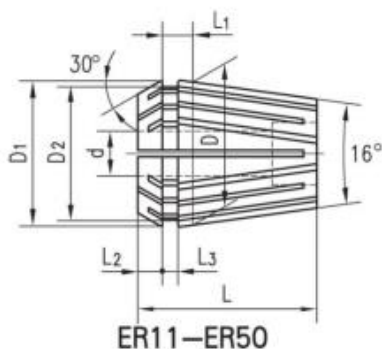


ER8

Артикул	d	D	D1	D2	L	L1	L2	L3	Точность
ER11-1.0AA	1.0	11.5	11.5	9.5	18	3.8	2.5	2	0,008
ER11-1.5AA	1.5	11.5	11.5	9.5	18	3.8	2.5	2	0,008
ER11-2.0AA	2.0	11.5	11.5	9.5	18	3.8	2.5	2	0,008
ER11-2.5AA	2.5	11.5	11.5	9.5	18	3.8	2.5	2	0,008
ER11-3.0AA	3.0	11.5	11.5	9.5	18	3.8	2.5	2	0,008
ER11-3.5AA	3.5	11.5	11.5	9.5	18	3.8	2.5	2	0,008
ER11-4.5AA	4.5	11.5	11.5	9.5	18	3.8	2.5	2	0,008
ER11-5.0AA	5.0	11.5	11.5	9.5	18	3.8	2.5	2	0,008
ER11-5.5AA	5.5	11.5	11.5	9.5	18	3.8	2.5	2	0,008
ER11-6.0AA	6.0	11.5	11.5	9.5	18	3.8	2.5	2	0,008
ER11-6.5AA	6.5	11.5	11.5	9.5	18	3.8	2.5	2	0,008
ER11-7.0AA	7.0	11.5	11.5	9.5	18	3.8	2.5	2	0,008
ER16-1.0AA	1.0	16	17	13.8	27.5	6.26	4.0	2.7	0,008
ER16-2.0AA	2.0	16	17	13.8	27.5	6.26	4.0	2.7	0,008
ER16-3.0AA	3.3	16	17	13.8	27.5	6.26	4.0	2.7	0,008
ER16-4.0AA	4.0	16	17	13.8	27.5	6.26	4.0	2.7	0,008
ER16-5.0AA	5.0	16	17	13.8	27.5	6.26	4.0	2.7	0,008
ER16-6.0AA	6.0	16	17	13.8	27.5	6.26	4.0	2.7	0,008
ER16-7.0AA	7.0	16	17	13.8	27.5	6.26	4.0	2.7	0,008
ER16-8.0AA	8.0	16	17	13.8	27.5	6.26	4.0	2.7	0,008
ER16-9.0AA	9.0	16	17	13.8	27.5	6.26	4.0	2.7	0,008
ER16-10.0AA	10.0	16	17	13.8	27.5	6.26	4.0	2.7	0,008
ER20-1.0AA	1.0	20	21	17.4	31.5	6.36	4.8	2.8	0,008
ER20-2.0AA	2.0	20	21	17.4	31.5	6.36	4.8	2.8	0,008
ER20-3.0AA	3.3	20	21	17.4	31.5	6.36	4.8	2.8	0,008
ER20-4.0AA	4.0	20	21	17.4	31.5	6.36	4.8	2.8	0,008
ER20-5.0AA	5.0	20	21	17.4	31.5	6.36	4.8	2.8	0,008
ER20-6.0AA	6.0	20	21	17.4	31.5	6.36	4.8	2.8	0,008
ER20-7.0AA	7.0	20	21	17.4	31.5	6.36	4.8	2.8	0,008
ER20-8.0AA	8.0	20	21	17.4	31.5	6.36	4.8	2.8	0,008
ER20-9.0AA	9.0	20	21	17.4	31.5	6.36	4.8	2.8	0,008
ER20-10.0AA	10.0	20	21	17.4	31.5	6.36	4.8	2.8	0,008
ER20-11.0AA	11.0	20	21	17.4	31.5	6.36	4.8	2.8	0,008
ER20-12.0AA	12.0	20	21	17.4	31.5	6.36	4.8	2.8	0,008
ER20-13.0AA	13.0	20	21	17.4	31.5	6.36	4.8	2.8	0,008

Аксессуары

Цанги ER -AA (0,008)

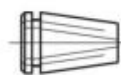
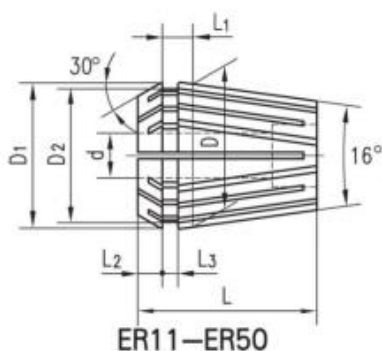


ER8

Артикул	d	D	D1	D2	L	L1	L2	L3	Точность
ER25-1.0AA	1.0	25	36	22	34	6.66	5	3.1	0,008
ER25-2.0AA	2.0	25	36	22	34	6.66	5	3.1	0,008
ER25-3.0AA	3.0	25	36	22	34	6.66	5	3.1	0,008
ER25-4.0AA	4.0	25	36	22	34	6.66	5	3.1	0,008
ER25-5.0AA	5.0	25	36	22	34	6.66	5	3.1	0,008
ER25-6.0AA	6.0	25	36	22	34	6.66	5	3.1	0,008
ER25-7.0AA	7.0	25	36	22	34	6.66	5	3.1	0,008
ER25-8.0AA	8.0	25	36	22	34	6.66	5	3.1	0,008
ER25-9.0AA	9.0	25	36	22	34	6.66	5	3.1	0,008
ER25-10.0AA	10.0	25	36	22	34	6.66	5	3.1	0,008
ER25-11.0AA	11.0	25	36	22	34	6.66	5	3.1	0,008
ER25-12.0AA	12.0	25	36	22	34	6.66	5	3.1	0,008
ER25-13.0AA	13.0	25	36	22	34	6.66	5	3.1	0,008
ER25-14.0AA	14.0	25	36	22	34	6.66	5	3.1	0,008
ER25-15.0AA	15.0	25	36	22	34	6.66	5	3.1	0,008
ER25-16.0AA	16.0	25	36	22	34	6.66	5	3.1	0,008
ER32-2.0AA	2.0	32	33	29.2	40	7.16	5.5	3.6	0,008
ER32-3.0AA	3.0	32	33	29.2	40	7.16	5.5	3.6	0,008
ER32-4.0AA	4.0	32	33	29.2	40	7.16	5.5	3.6	0,008
ER32-5.0AA	5.0	32	33	29.2	40	7.16	5.5	3.6	0,008
ER32-6.0AA	6.0	32	33	29.2	40	7.16	5.5	3.6	0,008
ER32-7.0AA	7.0	32	33	29.2	40	7.16	5.5	3.6	0,008
ER32-8.0AA	8.0	32	33	29.2	40	7.16	5.5	3.6	0,008
ER32-9.0AA	9.0	32	33	29.2	40	7.16	5.5	3.6	0,008
ER32-10.0AA	10.0	32	33	29.2	40	7.16	5.5	3.6	0,008
ER32-11.0AA	11.0	32	33	29.2	40	7.16	5.5	3.6	0,008
ER32-12.0AA	12.0	32	33	29.2	40	7.16	5.5	3.6	0,008
ER32-13.0AA	13.0	32	33	29.2	40	7.16	5.5	3.6	0,008
ER32-14.0AA	14.0	32	33	29.2	40	7.16	5.5	3.6	0,008
ER32-15.0AA	15.0	32	33	29.2	40	7.16	5.5	3.6	0,008
ER32-16.0AA	16.0	32	33	29.2	40	7.16	5.5	3.6	0,008
ER32-17.0AA	17.0	32	33	29.2	40	7.16	5.5	3.6	0,008
ER32-18.0AA	18.0	32	33	29.2	40	7.16	5.5	3.6	0,008
ER32-19.0AA	19.0	32	33	29.2	40	7.16	5.5	3.6	0,008
ER32-20.0AA	20.0	32	33	29.2	40	7.16	5.5	3.6	0,008

Аксессуары

Цанги ER -AA (0,008)

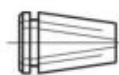
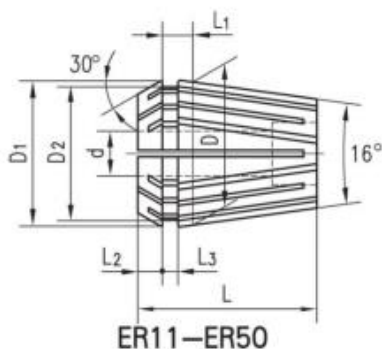


ER8

Артикул	d	D	D1	D2	L	L1	L2	L3	Точность
ER40-3.0AA	3.0	40	41	36.5	46.0	7.66	7.0	4.1	0,008
ER40-4.0AA	4.0	40	41	36.5	46.0	7.66	7.0	4.1	0,008
ER40-5.0AA	5.0	40	41	36.5	46.0	7.66	7.0	4.1	0,008
ER40-6.0AA	6.0	40	41	36.5	46.0	7.66	7.0	4.1	0,008
ER40-7.0AA	7.0	40	41	36.5	46.0	7.66	7.0	4.1	0,008
ER40-8.0AA	8.0	40	41	36.5	46.0	7.66	7.0	4.1	0,008
ER40-9.0AA	9.0	40	41	36.5	46.0	7.66	7.0	4.1	0,008
ER40-10.0AA	10.0	40	41	36.5	46.0	7.66	7.0	4.1	0,008
ER40-11.0AA	11.0	40	41	36.5	46.0	7.66	7.0	4.1	0,008
ER40-12.0AA	12.0	40	41	36.5	46.0	7.66	7.0	4.1	0,008
ER40-13.0AA	13.0	40	41	36.5	46.0	7.66	7.0	4.1	0,008
ER40-14.0AA	14.0	40	41	36.5	46.0	7.66	7.0	4.1	0,008
ER40-15.0AA	15.0	40	41	36.5	46.0	7.66	7.0	4.1	0,008
ER40-16.0AA	16.0	40	41	36.5	46.0	7.66	7.0	4.1	0,008
ER40-17.0AA	17.0	40	41	36.5	46.0	7.66	7.0	4.1	0,008
ER40-18.0AA	18.0	40	41	36.5	46.0	7.66	7.0	4.1	0,008
ER40-19.0AA	19.0	40	41	36.5	46.0	7.66	7.0	4.1	0,008
ER40-20.0AA	20.0	40	41	36.5	46.0	7.66	7.0	4.1	0,008
ER40-21.0AA	21.0	40	41	36.5	46.0	7.66	7.0	4.1	0,008
ER40-22.0AA	22.0	40	41	36.5	46.0	7.66	7.0	4.1	0,008
ER40-23.0AA	23.0	40	41	36.5	46.0	7.66	7.0	4.1	0,008
ER40-24.0AA	24.0	40	41	36.5	46.0	7.66	7.0	4.1	0,008
ER40-25.0AA	25.0	40	41	36.5	46.0	7.66	7.0	4.1	0,008
ER40-26.0AA	26.0	40	41	36.5	46.0	7.66	7.0	4.1	0,008

Аксессуары

Цанги ER -AAA (0,005)

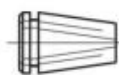
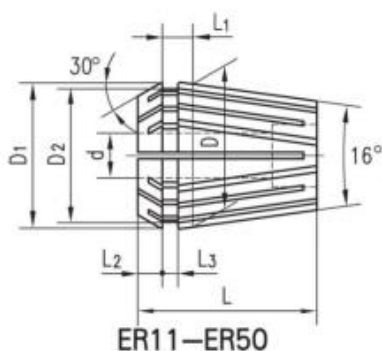


ER8

Артикул	d	D	D1	D2	L	L1	L2	L3	Точность
ER11-1.0AAA	1.0	11.5	11.5	9.5	18	3.8	2.5	2	0,005
ER11-1.5AAA	1.5	11.5	11.5	9.5	18	3.8	2.5	2	0,005
ER11-2.0AAA	2.0	11.5	11.5	9.5	18	3.8	2.5	2	0,005
ER11-2.5AAA	2.5	11.5	11.5	9.5	18	3.8	2.5	2	0,005
ER11-3.0AAA	3.0	11.5	11.5	9.5	18	3.8	2.5	2	0,005
ER11-3.5AAA	3.5	11.5	11.5	9.5	18	3.8	2.5	2	0,005
ER11-4.5AAA	4.5	11.5	11.5	9.5	18	3.8	2.5	2	0,005
ER11-5.0AAA	5.0	11.5	11.5	9.5	18	3.8	2.5	2	0,005
ER11-5.5AAA	5.5	11.5	11.5	9.5	18	3.8	2.5	2	0,005
ER11-6.0AAA	6.0	11.5	11.5	9.5	18	3.8	2.5	2	0,005
ER11-6.5AAA	6.5	11.5	11.5	9.5	18	3.8	2.5	2	0,005
ER11-7.0AAA	7.0	11.5	11.5	9.5	18	3.8	2.5	2	0,005
ER16-1.0AAA	1.0	16	17	13.8	27.5	6.26	4.0	2.7	0,005
ER16-2.0AAA	2.0	16	17	13.8	27.5	6.26	4.0	2.7	0,005
ER16-3.0AAA	3.3	16	17	13.8	27.5	6.26	4.0	2.7	0,005
ER16-4.0AAA	4.0	16	17	13.8	27.5	6.26	4.0	2.7	0,005
ER16-5.0AAA	5.0	16	17	13.8	27.5	6.26	4.0	2.7	0,005
ER16-6.0AAA	6.0	16	17	13.8	27.5	6.26	4.0	2.7	0,005
ER16-7.0AAA	7.0	16	17	13.8	27.5	6.26	4.0	2.7	0,005
ER16-8.0AAA	8.0	16	17	13.8	27.5	6.26	4.0	2.7	0,005
ER16-9.0AAA	9.0	16	17	13.8	27.5	6.26	4.0	2.7	0,005
ER16-10.0AAA	10.0	16	17	13.8	27.5	6.26	4.0	2.7	0,005
ER20-1.0AAA	1.0	20	21	17.4	31.5	6.36	4.8	2.8	0,005
ER20-2.0AAA	2.0	20	21	17.4	31.5	6.36	4.8	2.8	0,005
ER20-3.0AAA	3.3	20	21	17.4	31.5	6.36	4.8	2.8	0,005
ER20-4.0AAA	4.0	20	21	17.4	31.5	6.36	4.8	2.8	0,005
ER20-5.0AAA	5.0	20	21	17.4	31.5	6.36	4.8	2.8	0,005
ER20-6.0AAA	6.0	20	21	17.4	31.5	6.36	4.8	2.8	0,005
ER20-7.0AAA	7.0	20	21	17.4	31.5	6.36	4.8	2.8	0,005
ER20-8.0AAA	8.0	20	21	17.4	31.5	6.36	4.8	2.8	0,005
ER20-9.0AAA	9.0	20	21	17.4	31.5	6.36	4.8	2.8	0,005
ER20-10.0AAA	10.0	20	21	17.4	31.5	6.36	4.8	2.8	0,005
ER20-11.0AAA	11.0	20	21	17.4	31.5	6.36	4.8	2.8	0,005
ER20-12.0AAA	12.0	20	21	17.4	31.5	6.36	4.8	2.8	0,005
ER20-13.0AAA	13.0	20	21	17.4	31.5	6.36	4.8	2.8	0,005

Аксессуары

Цанги ER -AAA (0,005)

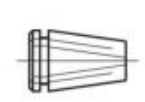
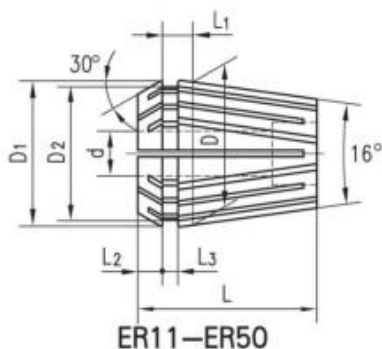


ER8

Артикул	d	D	D1	D2	L	L1	L2	L3	Точность
ER25-1.0AAA	1.0	25	36	22	34	6.66	5	3.1	0,005
ER25-2.0AAA	2.0	25	36	22	34	6.66	5	3.1	0,005
ER25-3.0AAA	3.3	25	36	22	34	6.66	5	3.1	0,005
ER25-4.0AAA	4.0	25	36	22	34	6.66	5	3.1	0,005
ER25-5.0AAA	5.0	25	36	22	34	6.66	5	3.1	0,005
ER25-6.0AAA	6.0	25	36	22	34	6.66	5	3.1	0,005
ER25-7.0AAA	7.0	25	36	22	34	6.66	5	3.1	0,005
ER25-8.0AAA	8.0	25	36	22	34	6.66	5	3.1	0,005
ER25-9.0AAA	9.0	25	36	22	34	6.66	5	3.1	0,005
ER25-10.0AAA	10.0	25	36	22	34	6.66	5	3.1	0,005
ER25-11.0AAA	11.0	25	36	22	34	6.66	5	3.1	0,005
ER25-12.0AAA	12.0	25	36	22	34	6.66	5	3.1	0,005
ER25-13.0AAA	13.0	25	36	22	34	6.66	5	3.1	0,005
ER25-14.0AAA	14.0	25	36	22	34	6.66	5	3.1	0,005
ER25-15.0AAA	15.0	25	36	22	34	6.66	5	3.1	0,005
ER25-16.0AAA	16.0	25	36	22	34	6.66	5	3.1	0,005
ER32-2.0AAA	2.0	32	33	29.2	40	7.16	5.5	3.6	0,005
ER32-3.0AAA	3.3	32	33	29.2	40	7.16	5.5	3.6	0,005
ER32-4.0AAA	4.0	32	33	29.2	40	7.16	5.5	3.6	0,005
ER32-5.0AAA	5.0	32	33	29.2	40	7.16	5.5	3.6	0,005
ER32-6.0AAA	6.0	32	33	29.2	40	7.16	5.5	3.6	0,005
ER32-7.0AAA	7.0	32	33	29.2	40	7.16	5.5	3.6	0,005
ER32-8.0AAA	8.0	32	33	29.2	40	7.16	5.5	3.6	0,005
ER32-9.0AAA	9.0	32	33	29.2	40	7.16	5.5	3.6	0,005
ER32-10.0AAA	10.0	32	33	29.2	40	7.16	5.5	3.6	0,005
ER32-11.0AAA	11.0	32	33	29.2	40	7.16	5.5	3.6	0,005
ER32-12.0AAA	12.0	32	33	29.2	40	7.16	5.5	3.6	0,005
ER32-13.0AAA	13.0	32	33	29.2	40	7.16	5.5	3.6	0,005
ER32-14.0AAA	14.0	32	33	29.2	40	7.16	5.5	3.6	0,005
ER32-15.0AAA	15.0	32	33	29.2	40	7.16	5.5	3.6	0,005
ER32-16.0AAA	16.0	32	33	29.2	40	7.16	5.5	3.6	0,005
ER32-17.0AAA	17.0	32	33	29.2	40	7.16	5.5	3.6	0,005
ER32-18.0AAA	18.0	32	33	29.2	40	7.16	5.5	3.6	0,005
ER32-19.0AAA	19.0	32	33	29.2	40	7.16	5.5	3.6	0,005
ER32-20.0AAA	20.0	32	33	29.2	40	7.16	5.5	3.6	0,005

Аксессуары

Цанги ER -AAA (0,005)

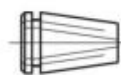
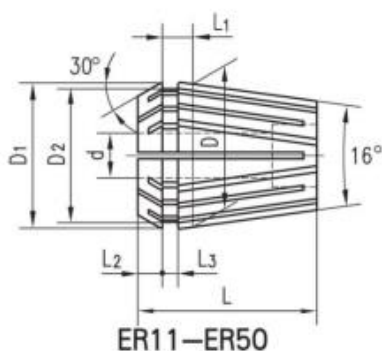


ER8

Артикул	d	D	D1	D2	L	L1	L2	L3	Точность
ER40-3.0AAA	3.0	40	41	36.5	46.0	7.66	7.0	4.1	0,005
ER40-4.0AAA	4.0	40	41	36.5	46.0	7.66	7.0	4.1	0,005
ER40-5.0AAA	5.0	40	41	36.5	46.0	7.66	7.0	4.1	0,005
ER40-6.0AAA	6.0	40	41	36.5	46.0	7.66	7.0	4.1	0,005
ER40-7.0AAA	7.0	40	41	36.5	46.0	7.66	7.0	4.1	0,005
ER40-8.0AAA	8.0	40	41	36.5	46.0	7.66	7.0	4.1	0,005
ER40-9.0AAA	9.0	40	41	36.5	46.0	7.66	7.0	4.1	0,005
ER40-10.0AAA	10.0	40	41	36.5	46.0	7.66	7.0	4.1	0,005
ER40-11.0AAA	11.0	40	41	36.5	46.0	7.66	7.0	4.1	0,005
ER40-12.0AAA	12.0	40	41	36.5	46.0	7.66	7.0	4.1	0,005
ER40-13.0AAA	13.0	40	41	36.5	46.0	7.66	7.0	4.1	0,005
ER40-14.0AAA	14.0	40	41	36.5	46.0	7.66	7.0	4.1	0,005
ER40-15.0AAA	15.0	40	41	36.5	46.0	7.66	7.0	4.1	0,005
ER40-16.0AAA	16.0	40	41	36.5	46.0	7.66	7.0	4.1	0,005
ER40-17.0AAA	17.0	40	41	36.5	46.0	7.66	7.0	4.1	0,005
ER40-18.0AAA	18.0	40	41	36.5	46.0	7.66	7.0	4.1	0,005
ER40-19.0AAA	19.0	40	41	36.5	46.0	7.66	7.0	4.1	0,005
ER40-20.0AAA	20.0	40	41	36.5	46.0	7.66	7.0	4.1	0,005
ER40-21.0AAA	21.0	40	41	36.5	46.0	7.66	7.0	4.1	0,005
ER40-22.0AAA	22.0	40	41	36.5	46.0	7.66	7.0	4.1	0,005
ER40-23.0AAA	23.0	40	41	36.5	46.0	7.66	7.0	4.1	0,005
ER40-24.0AAA	24.0	40	41	36.5	46.0	7.66	7.0	4.1	0,005
ER40-25.0AAA	25.0	40	41	36.5	46.0	7.66	7.0	4.1	0,005
ER40-26.0AAA	26.0	40	41	36.5	46.0	7.66	7.0	4.1	0,005

Аксессуары

Цанги ERS (Герметичные с резиновым уплотнителем)



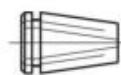
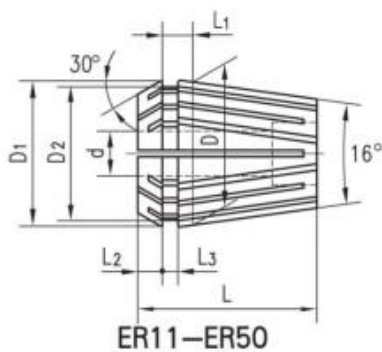
ER11-ER50

ER8

Артикул	d	D	D1	D2	L	L1	L2	L3	Точность
ERS16-1.0	1.0	16	17	13.8	27.5	6.26	4.0	2.7	0.01
ERS16-2.0	2.0	16	17	13.8	27.5	6.26	4.0	2.7	0.01
ERS16-3.0	3.3	16	17	13.8	27.5	6.26	4.0	2.7	0.01
ERS16-4.0	4.0	16	17	13.8	27.5	6.26	4.0	2.7	0.01
ERS16-5.0	5.0	16	17	13.8	27.5	6.26	4.0	2.7	0.01
ERS16-6.0	6.0	16	17	13.8	27.5	6.26	4.0	2.7	0.01
ERS16-7.0	7.0	16	17	13.8	27.5	6.26	4.0	2.7	0.01
ERS16-8.0	8.0	16	17	13.8	27.5	6.26	4.0	2.7	0.01
ERS16-9.0	9.0	16	17	13.8	27.5	6.26	4.0	2.7	0.01
ERS16-10.0	10.0	16	17	13.8	27.5	6.26	4.0	2.7	0.01
ERS20-1.0	1.0	20	21	17.4	31.5	6.36	4.8	2.8	0.01
ERS20-2.0	2.0	20	21	17.4	31.5	6.36	4.8	2.8	0.01
ERS20-3.0	3.3	20	21	17.4	31.5	6.36	4.8	2.8	0.01
ERS20-4.0	4.0	20	21	17.4	31.5	6.36	4.8	2.8	0.01
ERS20-5.0	5.0	20	21	17.4	31.5	6.36	4.8	2.8	0.01
ERS20-6.0	6.0	20	21	17.4	31.5	6.36	4.8	2.8	0.01
ERS20-7.0	7.0	20	21	17.4	31.5	6.36	4.8	2.8	0.01
ERS20-8.0	8.0	20	21	17.4	31.5	6.36	4.8	2.8	0.01
ERS20-9.0	9.0	20	21	17.4	31.5	6.36	4.8	2.8	0.01
ERS20-10.0	10.0	20	21	17.4	31.5	6.36	4.8	2.8	0.01
ERS20-11.0	11.0	20	21	17.4	31.5	6.36	4.8	2.8	0.01
ERS20-12.0	12.0	20	21	17.4	31.5	6.36	4.8	2.8	0.01
ERS20-13.0	13.0	20	21	17.4	31.5	6.36	4.8	2.8	0.01

Аксессуары

Цанги ERS (Герметичные с резиновым уплотнителем)



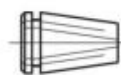
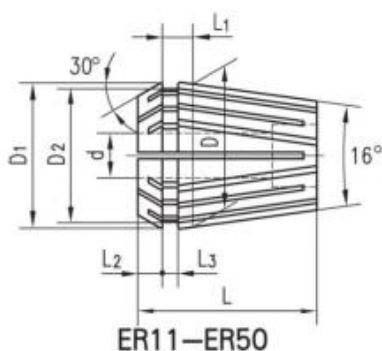
ER11-ER50

ER8

Артикул	d	D	D1	D2	L	L1	L2	L3	Точность
ERS25-1.0	1.0	25	36	22	34	6.66	5	3.1	0.01
ERS25-2.0	2.0	25	36	22	34	6.66	5	3.1	0.01
ERS25-3.0	3.0	25	36	22	34	6.66	5	3.1	0.01
ERS25-4.0	4.0	25	36	22	34	6.66	5	3.1	0.01
ERS25-5.0	5.0	25	36	22	34	6.66	5	3.1	0.01
ERS25-6.0	6.0	25	36	22	34	6.66	5	3.1	0.01
ERS25-7.0	7.0	25	36	22	34	6.66	5	3.1	0.01
ERS25-8.0	8.0	25	36	22	34	6.66	5	3.1	0.01
ERS25-9.0	9.0	25	36	22	34	6.66	5	3.1	0.01
ERS25-10.0	10.0	25	36	22	34	6.66	5	3.1	0.01
ERS25-11.0	11.0	25	36	22	34	6.66	5	3.1	0.01
ERS25-12.0	12.0	25	36	22	34	6.66	5	3.1	0.01
ERS25-13.0	13.0	25	36	22	34	6.66	5	3.1	0.01
ERS25-14.0	14.0	25	36	22	34	6.66	5	3.1	0.01
ERS25-15.0	15.0	25	36	22	34	6.66	5	3.1	0.01
ERS25-16.0	16.0	25	36	22	34	6.66	5	3.1	0.01
ERS32-2.0	2.0	32	33	29.2	40	7.16	5.5	3.6	0.01
ERS32-3.0	3.0	32	33	29.2	40	7.16	5.5	3.6	0.01
ERS32-4.0	4.0	32	33	29.2	40	7.16	5.5	3.6	0.01
ERS32-5.0	5.0	32	33	29.2	40	7.16	5.5	3.6	0.01
ERS32-6.0	6.0	32	33	29.2	40	7.16	5.5	3.6	0.01
ERS32-7.0	7.0	32	33	29.2	40	7.16	5.5	3.6	0.01
ERS32-8.0	8.0	32	33	29.2	40	7.16	5.5	3.6	0.01
ERS32-9.0	9.0	32	33	29.2	40	7.16	5.5	3.6	0.01
ERS32-10.0	10.0	32	33	29.2	40	7.16	5.5	3.6	0.01
ERS32-11.0	11.0	32	33	29.2	40	7.16	5.5	3.6	0.01
ERS32-12.0	12.0	32	33	29.2	40	7.16	5.5	3.6	0.01
ERS32-13.0	13.0	32	33	29.2	40	7.16	5.5	3.6	0.01
ERS32-14.0	14.0	32	33	29.2	40	7.16	5.5	3.6	0.01
ERS32-15.0	15.0	32	33	29.2	40	7.16	5.5	3.6	0.01
ERS32-16.0	16.0	32	33	29.2	40	7.16	5.5	3.6	0.01
ERS32-17.0	17.0	32	33	29.2	40	7.16	5.5	3.6	0.01
ERS32-18.0	18.0	32	33	29.2	40	7.16	5.5	3.6	0.01
ERS32-19.0	19.0	32	33	29.2	40	7.16	5.5	3.6	0.01
ERS32-20.0	20.0	32	33	29.2	40	7.16	5.5	3.6	0.01

Аксессуары

Цанги ERS (Герметичные с резиновым уплотнителем)



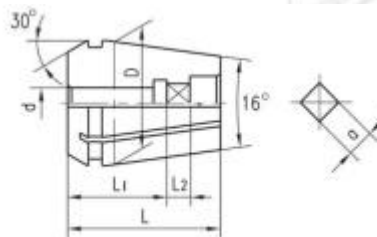
ER8

ER11-ER50

Артикул	d	D	D1	D2	L	L1	L2	L3	Точность
ERS40-3.0	3.0	40	41	36.5	46.0	7.66	7.0	4.1	0.01
ERS40-4.0	4.0	40	41	36.5	46.0	7.66	7.0	4.1	0.01
ERS40-5.0	5.0	40	41	36.5	46.0	7.66	7.0	4.1	0.01
ERS40-6.0	6.0	40	41	36.5	46.0	7.66	7.0	4.1	0.01
ERS40-7.0	7.0	40	41	36.5	46.0	7.66	7.0	4.1	0.01
ERS40-8.0	8.0	40	41	36.5	46.0	7.66	7.0	4.1	0.01
ERS40-9.0	9.0	40	41	36.5	46.0	7.66	7.0	4.1	0.01
ERS40-10.0	10.0	40	41	36.5	46.0	7.66	7.0	4.1	0.01
ERS40-11.0	11.0	40	41	36.5	46.0	7.66	7.0	4.1	0.01
ERS40-12.0	12.0	40	41	36.5	46.0	7.66	7.0	4.1	0.01
ERS40-13.0	13.0	40	41	36.5	46.0	7.66	7.0	4.1	0.01
ERS40-14.0	14.0	40	41	36.5	46.0	7.66	7.0	4.1	0.01
ERS40-15.0	15.0	40	41	36.5	46.0	7.66	7.0	4.1	0.01
ERS40-16.0	16.0	40	41	36.5	46.0	7.66	7.0	4.1	0.01
ERS40-17.0	17.0	40	41	36.5	46.0	7.66	7.0	4.1	0.01
ERS40-18.0	18.0	40	41	36.5	46.0	7.66	7.0	4.1	0.01
ERS40-19.0	19.0	40	41	36.5	46.0	7.66	7.0	4.1	0.01
ERS40-20.0	20.0	40	41	36.5	46.0	7.66	7.0	4.1	0.01
ERS40-21.0	21.0	40	41	36.5	46.0	7.66	7.0	4.1	0.01
ERS40-22.0	22.0	40	41	36.5	46.0	7.66	7.0	4.1	0.01
ERS40-23.0	23.0	40	41	36.5	46.0	7.66	7.0	4.1	0.01
ERS40-24.0	24.0	40	41	36.5	46.0	7.66	7.0	4.1	0.01
ERS40-25.0	25.0	40	41	36.5	46.0	7.66	7.0	4.1	0.01
ERS40-26.0	26.0	40	41	36.5	46.0	7.66	7.0	4.1	0.01

Аксессуары

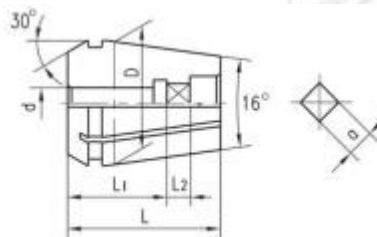
Цанги ER для метчиков



Артикул	d	a	ER
ER16G-3.5x2.7	3.5	2.7	16
ER16G-4.0x3.0	4	3.0	16
ER16G-4.5x3.4	4.5	3.4	16
ER16G-5.5x4.3	5.5	4.3	16
ER16G-6.0x4.9	6	4.9	16
ER16G-7.0x5.5	7	7.0	16
ER16G-8.0x6.2	8	5.5	16
ER20G-3.5x2.7	3.5	2.7	20
ER20G-4.0x3.0	4	3.0	20
ER20G-4.5x3.4	4.5	3.4	20
ER20G-5.5x4.3	5.5	4.3	20
ER20G-6.0x4.9	6	4.9	20
ER20G-7.0x5.5	7	7.0	20
ER20G-8.0x6.2	8	5.5	20
ER20G-9.0x7.0	9	7.0	20
ER20G-10x8.0	10	8.0	20
ER25G-3.5x2.7	3.5	2.7	25
ER25G-4.0x3.0	4	3.0	25
ER25G-4.5x3.4	4.5	3.4	25
ER25G-5.5x4.3	5.5	4.3	25
ER25G-6.0x4.9	6	4.9	25
ER25G-7.0x5.5	7	7.0	25
ER25G-8.0x6.2	8	5.5	25
ER25G-9.0x7.0	9	7.0	25
ER25G-10x8.0	10	8.0	25
ER25G-11x9.0	11	9.0	25
ER25G-12x8.0	12	10.0	25
ER25G-14x11.0	14	11.0	25
ER25G-16x12.0	16	12.0	25

Аксессуары

Цанги ER для метчиков



Артикул	d	a	ER
ER32G-3.5x2.7	3.5	2.7	32
ER32G-4.0x3.0	4	3.0	32
ER32G-4.5x3.4	4.5	3.4	32
ER32G-5.5x4.3	5.5	4.3	32
ER32G-6.0x4.9	6	4.9	32
ER32G-7.0x5.5	7	7.0	32
ER32G-8.0x6.2	8	5.5	32
ER32G-9.0x7.0	9	7.0	32
ER32G-10x8.0	10	8.0	32
ER32G-11x9.0	11	9.0	32
ER32G-12x8.0	12	10.0	32
ER32G-14x11.0	14	11.0	32
ER32G-16x12.0	16	12.0	32
ER32G-18x14.5	18	14.5	32
ER32G-20x16.0	20	16.0	32
ER40G-6.0x4.9	6	4.9	40
ER40G-7.0x5.5	7	7.0	40
ER40G-8.0x6.2	8	5.5	40
ER40G-9.0x7.0	9	7.0	40
ER40G-10x8.0	10	8.0	40
ER40G-11x9.0	11	9.0	40
ER40G-12x8.0	12	10.0	40
ER40G-14x11.0	14	11.0	40
ER40G-16x12.0	16	12.0	40
ER40G-18x14.5	18	14.5	40
ER40G-20x16.0	20	16.0	40
ER40G-22x18.0	22	18.0	40
ER40G-25x20.0	25	20.0	40

Аксессуары

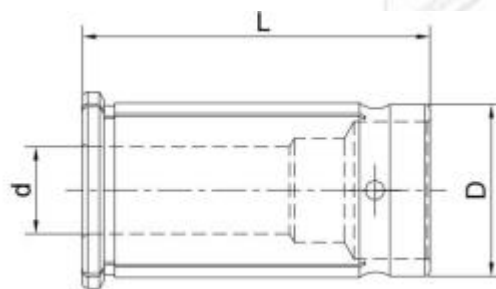
Наборы Цанг ER



Артикул	Диапазон зажима	Кол-во в наборе	Точность
ER11-7 PCS	1-7	7	0,01
ER11-7 PCS AA	1-7	7	0,008
ER11-13 PCS	1-7	13	0,01
ER11-13 PCS AA	1-7	13	0,008
ER16-10 PCS	1-10	10	0,01
ER16-10 PCS AA	1-10	10	0,008
ER20-13 PCS	1-13	13	0,01
ER20-13 PCS AA	1-13	13	0,008
ER25-15 PCS	2-16	15	0,01
ER25-15 PCS AA	2-16	15	0,008
ER32-18 PCS	3-20	18	0,01
ER32-18 PCS AA	3-20	18	0,008
ER40-23 PCS	4-26	23	0,01
ER40-23 PCS AA	4-26	23	0,008

Аксессуары

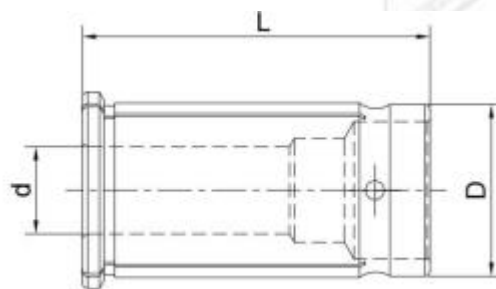
Цанги для силового патрона



Артикул	D	d	L
C16-4	16	4	45
C16-6	16	6	45
C16-8	16	8	45
C16-10	16	10	45
C16-12	16	12	45
C20-4	20	4	50
C20-6	20	6	50
C20-8	20	8	50
C20-10	20	10	50
C20-12	20	12	50
C20-16	20	16	50
C25-4	25	4	60
C25-6	25	6	60
C25-8	25	8	60
C25-10	25	10	60
C25-12	25	12	60
C25-16	25	16	60
C25-20	25	20	60
C32-4	32	4	65
C32-6	32	6	65
C32-8	32	8	65
C32-10	32	10	65
C32-12	32	12	65
C32-16	32	16	65
C32-20	32	20	65
C32-25	32	25	65
C40-4	40	4	80
C40-6	40	6	80
C40-8	40	8	80
C40-10	40	10	80
C40-12	40	12	80
C40-16	40	16	80
C40-20	40	20	80
C40-25	40	25	80
C40-32	40	32	80

Аксессуары

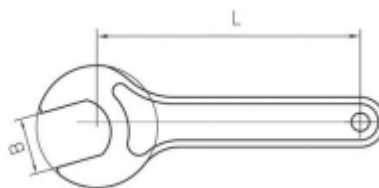
Цанги для силового патрона



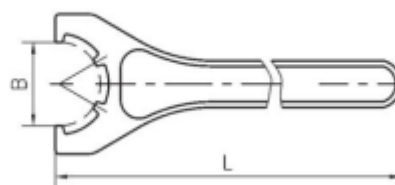
Артикул	D	d	L
C42-4	42	4	80
C42-6	42	6	80
C42-8	42	8	80
C42-10	42	10	80
C42-12	42	12	80
C42-16	42	16	80
C42-20	42	20	80
C42-25	42	25	80
C42-32	42	32	80

Аксессуары

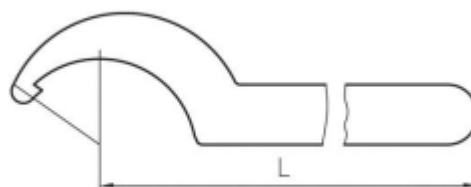
Ключи



Артикул	В	L	Для патронов
S\ER11	17	110	ER11-A
S\ER16	25	120	ER16-A
S\ER20	30	130	ER20-A



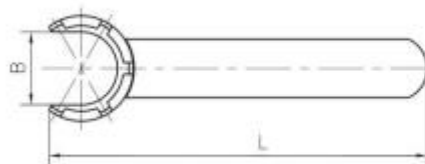
Артикул	В	L	Для патронов
S\ER25-S	37	210	ER25-B
S\ER32-S	45	250	ER32-B
S\ER40-S	58	290	ER40-B
S\ER50-S	72	350	ER50-B



Артикул	L	Диапазонов	Для патронов
S\ER25	168	38-42	ER25-B
S\ER32	190	45-52	ER32-B
S\ER40	210	55-63	ER40-B
S\ER50	240	78-85	ER50-B

Аксессуары

Ключи



Артикул	B	L	Для патронов
S\ER8M	7.5	70	ER8-M
S\ER11M	11	90	ER11-M
S\ER16M	15	110	ER16-M
S\ER20M	19.5	120	ER20-M
S\ER25M	25	130	ER25-M

ВИННСЛА 

V I N N S L 