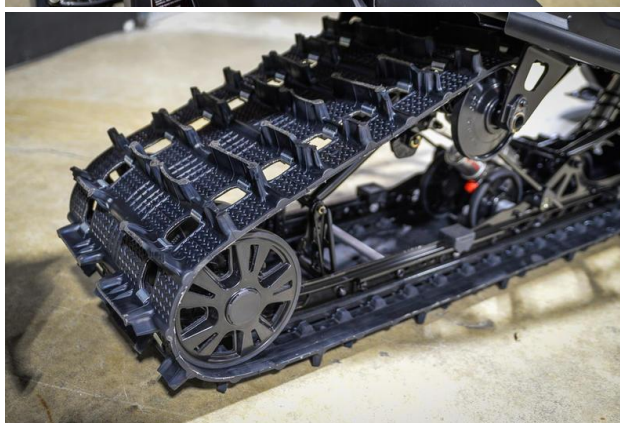
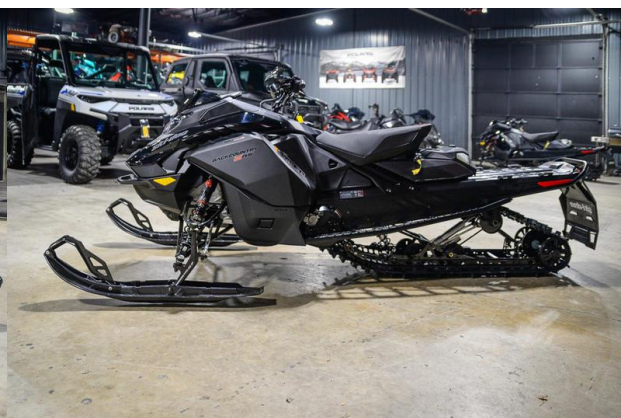


**2025 Ski-Doo Backcountry X-RS 850 E-TEC T.R 146 SS St.150 1.5\_43in  
Ski\_10.25in\_B Price in Kaliningrad is 2 000 000P**



- Condition New
- Year 2025
- Make Ski-Doo
- Model Backcountry X-RS 850 E-TEC T.R 146 SS St.150 1.5\_43in Ski\_10.25in\_B
- Category Crossover
- VIN 2BPSUZS42SV000079
- Color Black

#### Manufacturer Info

- **Engine**
- Engine Type Two-stroke, turbocharged, Water Injection System, eRAVE
- Cooling System Liquid-cooled
- Cylinder Liners 2
- Displacement 849 cc
- Bore 82 mm
- Stroke 80.4 mm
- Engine Power 180 up to 8,000 ft.
- Fuel System E-TEC direct injection with additional booster injectors
- Fuel Type Premium unleaded – 91
- Starter SHOT
- **Drivetrain**
- Drive/Driven Clutch pDrive with clickers QRS Vent Plus
- Sprocket Chain 73 mm / 2.86 in
- **Suspension**
- Front Suspension RAS RX
- Front Shocks KYB Pro 36 EA-3
- Front Travel (in./cm.) 279 mm / 11.0 in
- Rear Suspension cMotion X
- Rear Shocks KYB Pro 40 EA-3
- Rear Travel (in./cm.) 264 mm / 10.4 in
- Center Shocks KYB Pro 40 EA-3
- **Brakes**
- Brake System Type Brembo with adjustable lever
- **Dimensions**
- Overall Length Vehicle: 3,174 mm / 125 in
- Overall Width Vehicle: 1,211 mm / 47.8 in (adjustable)
- Overall Height Vehicle: 1,283 mm / 50.5 in
- Ski Center Distance (in./cm.) 1,090/43 (adjustable)
- Track (WxLxH in.) 146 x 15 x 1.5
- Height Riser block: 120 mm / 4.7 in
- **Capacities**
- Fuel Capacity Tank: 36 L / 9.5 gal
- Oil capacity Tank: 3.4 L / 3.6 gal
- **Weights**

- Dry Weight 500 lb
- **Lights and Safety**
- Headlight Type Premium high-performance LED
- **Features**
- Features Platform: REV Gen5 | Runner - 3/8 square – 4 | Front Bumper: Std | Rear Bumper: Std
- Ski Type Pilot RX
- Seat Type Trail narrow
- Handlebars Standard with J-hooks/ Transparent handguards
- Reverse RER
- Throttle Heated lever / grips: Standard
- Gauges 10.25 in. touchscreen