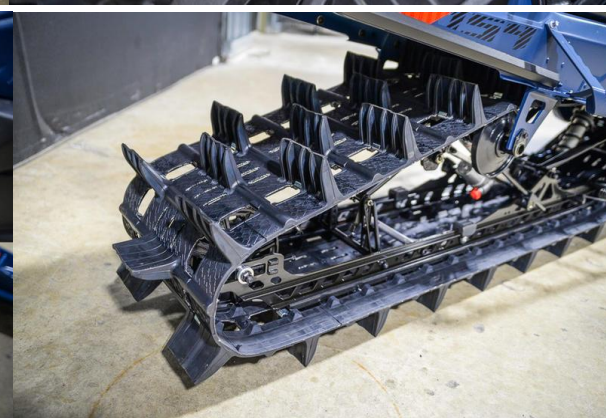
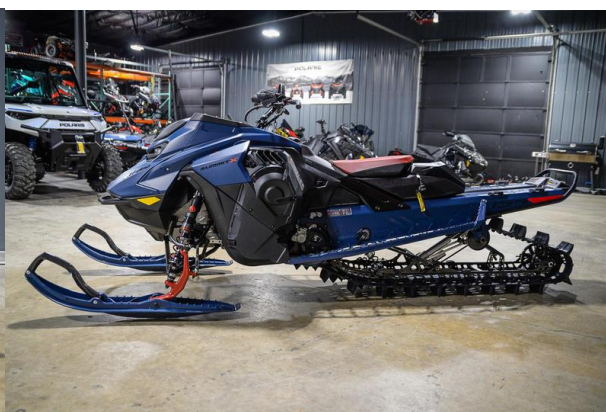


**2025 Ski-Doo Summit X w/ Expert Package 154 850 E-TEC Turbo R SHOT
PowderMax X-Light 3.0 HAC Price in Kaliningrad is 2 100 000P**



Condition	New
Model Year	2025
Manufacturer	Ski-Doo
Model	Summit X w/ Expert Package 154 850 E-TEC Turbo R SHOT PowderMax X-Light 3.0 HAC
Category	Deep Snow
Color	Dusty Navy and Black
VIN	2BPSTSSG0SV000232
Dimensions	
Length	Overall - 125.5 in. (3,188 mm)
Height	Overall - 51.4 in. (1,306 mm)
Width	Overall - 40.3 in. (1,024 mm) (adjustable)
Weight	Dry - 457 lb.
Engine & Drivetrain	
Engine	Rotax 850 E-TEC Turbo R, two-stroke, turbocharged, eRAVE
Cylinders	2
Cooling	Liquid
Horsepower	180 hp up to 8,000 ft.
Displacement	849 cc
Bore x Stroke	3.2 x 3.2 in. (82 x 80.4 mm)
Fuel System	E-TEC direct injection with additional booster injectors
Starting	SHOT
Drive Clutch	pDrive with clickers
Driven Clutch	QRS Vent Plus
Drive Sprocket	Pitch - 3.5 in. (89 mm)
Clutch Calibration	High-altitude
Reverse	RER
Brakes	Brembo with adjustable lever
Fuel Type	Premium unleaded
	Octane - 91
Fuel Capacity	9.5 US gal. (36 l)
Oil Capacity	3.6 qt. (3.4 l)
Operational	
Platform/Frame	REV Gen5
Handlebar	Tapered with J-hooks / Grab handle / Flexible handguards
	Riser block height - 4.7 in. (120 mm)
Instrumentation	Gauge - 4.5 in. digital
Seating or Rider capacity	Deep snow ultra compact
Skis	Pilot DS 4
Ski Stance	34 in. (864 mm) (adjustable)
Carbide	4 in.
	Runner - Square 3/8 in.
Track Type	PowderMax† X-Light
Track LxWxH	154 x 16 x 3.0 in.

Other**Includes**

Heated throttle lever grips

Safety Features

Bumpers (Front / Rear)

Headlights - Premium high-performance LED

Suspension**Shocks**

Front - KYB Pro 36 EA-3 with lightweight springs

Center - KYB 36 Plus with lightweight spring

Rear - KYB† Pro 36 EA-3

Front Suspension

RAS 3

Travel - 8.2 in. (207 mm)

Rear Suspension

tMotion XT with Adjustable limiter strap

Travel - 10.4 in. (264 mm)