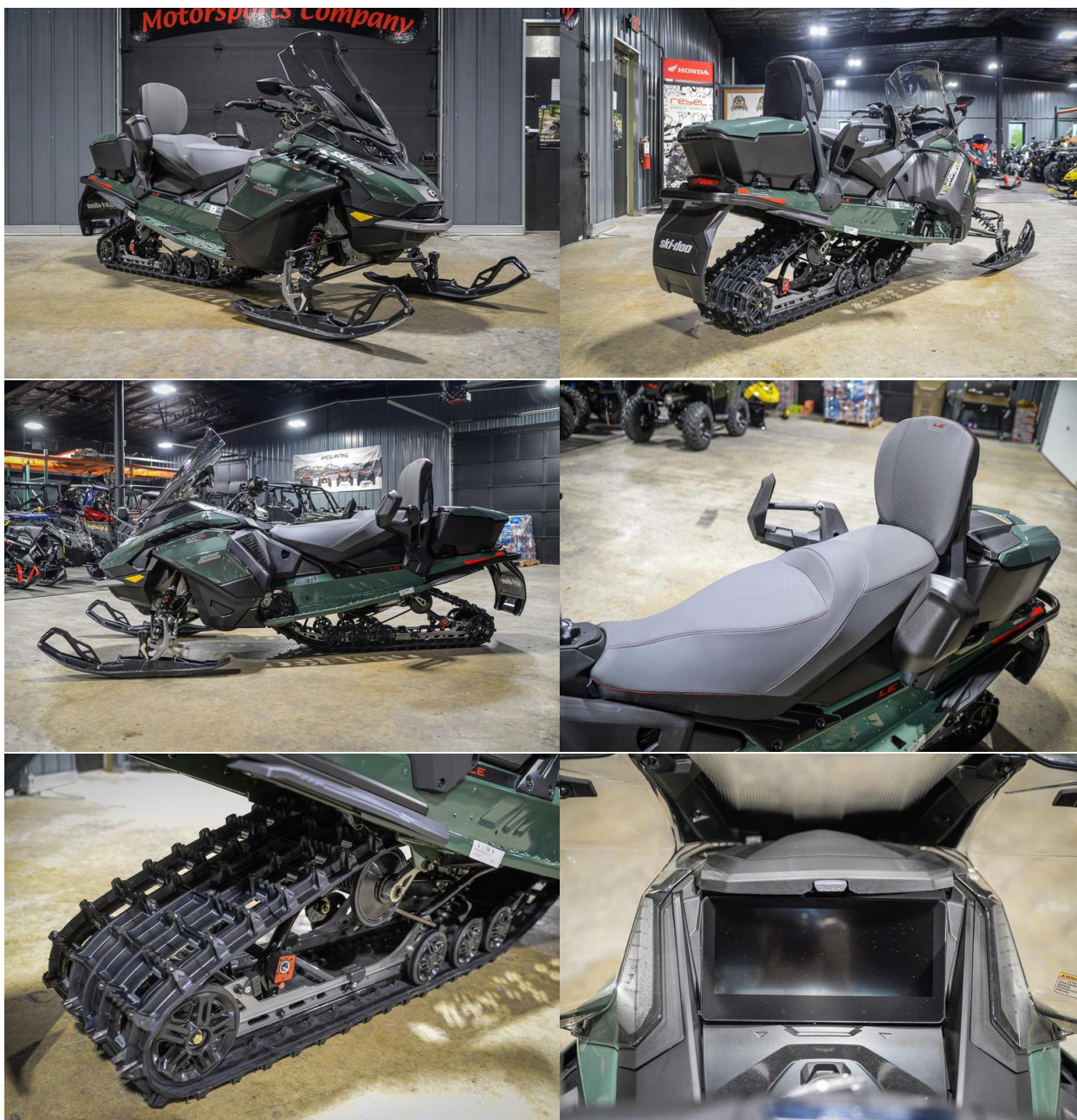


## 2024 Ski-Doo Grand Touring LE With Luxury Package 900 ACE Turbo R Price in Kaliningrad is 2 400 000P



- Condition New
- Year 2024
- Make Ski-Doo
- Model Grand Touring LE With Luxury Package 900 ACE Turbo R
- VIN 2BPSEPRB0RV000243
- Colors Terra Green

### MANUFACTURER INFO

- **Engine**
- Engine Type Details: Four-stroke D.O.H.C., dry sump, turbocharged
- Cooling System Liquid-cooled
- Cylinder Liners 3

• Displacement	899 cc
• Bore	73 mm
• Stroke	69.7 mm
• Engine Power	180
• Carburetion	EFI
• Fuel Type	Regular unleaded – 87
• Starter	Electric
• <b>Drivetrain</b>	
• Drive/Driven Clutchp	Drive QSR Vent
• Sprocket Chain	Drive pitch:36 mm / 1.43 in
• <b>Suspension</b>	
• Front Suspension	RAS X
• Front Shocks	KYB 36
• Front Travel (in./cm.)	225 mm / 8.9 in
• Rear Suspensionr	Motion X
• Rear Shocks	ACS (Air Control Suspension)
• Rear Travel (in./cm.)	276 mm / 10.9 in
• Center Shocks	KYB 36
• <b>Brakes</b>	
• Brake System Type	Brembo
• <b>Dimensions</b>	
• Overall Length	Vehicle: 3,127 mm / 123.1 in
• Overall Width	Vehicle: 1,211 mm / 47.8 in (adjustable)
• Overall Height	Vehicle: 1,513 mm / 59.6 in
• Ski Center Distance (in./cm.)	1,090 mm / 43 in (adjustable)
• Track (WxLxH in.)	Studded Silent Track II: 137 x 15 x 1.25 in
• Height	Riser block: 120 mm / 4.7 in
• <b>Capacities</b>	
• Fuel Capacity	Tank: 36 L / 9.5 gal
• Oil capacity	Tank: 3.3 L / 3.5 gal
• <b>Weights</b>	
• Dry Weight	611 lb
• <b>Lights and Safety</b>	
• Headlight Type	Premium high-performance LED
• <b>Features</b>	
• Features	Platform: REV® Gen5   Runner - Carbide: 1/2 round – 4
• Front	Bumper: Std   Rear Bumper: Heavy-duty
• Ski Type	Pilot TX
• Seat Type	Trail wide 2-up heated
• Handlebars	Standard
• Reverse	Electro-mechanic
• Air Filter	Radiator: Fan
• Throttle	Heated lever / grips: Standard (driver and passenger)
• Gauges	10.25 in. touchscreen
• Windshield	Ultra-high with mirrors