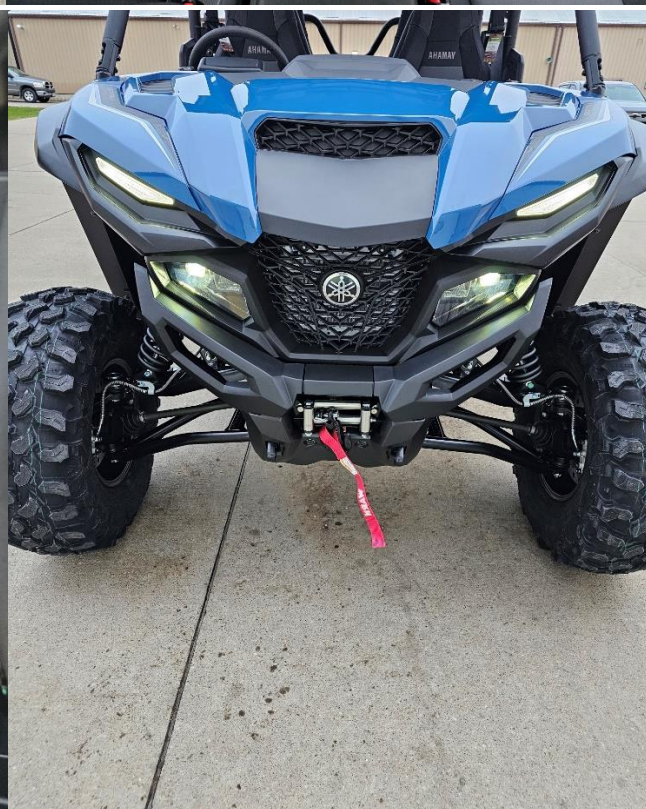


**2025 Yamaha Wolverine RMAX4 1000 Limited**  
**Price in Kaliningrad is 2 550 000P**



|                            |  |
|----------------------------|--|
| Condition                  | New  |
| Model Year                 | 2025   |
| Manufacturer               | Yamaha   |
| Model                      | Wolverine RMAX4 1000 Limited   |
| Category                   | Utility Vehicles   |
| VIN                        | 5Y4AN62Y4SA100845  |
| Color                      | Dusty Blue   |
| <b>Brakes/Wheels/Tires</b> |  |
| Brakes                     | Front / Rear - Dual hydraulic disc   |
| Tires                      | Front / Rear - 30 x 10.00R-14 Maxxis® Carnivore  |
| <b>Dimensions</b>          |  |
| Length                     | 150.8 in.  |
| Height                     | 82.7 in.   |
| Width                      | 66.7 in.   |
|                            | Stance - 64 in.  |
| Weight                     | Wet - 2,304 lb. (Wet weight includes the vehicle with all standard equipment and all fluids, including oil, coolant (as applicable) and a full tank of fuel. It does not include the weight of options or accessories. Wet weight is useful in making real-world comparisons with other models.) |
| Ground Clearance           | Max. - 13.8 in.  |
| Wheelbase                  | 118.1 in.  |
| <b>Drivetrain</b>          |  |
| Transmission               | Ultramatic V-belt with all-wheel engine braking; L, H, N, R  |
| Final Drive                | On-Command 4-way locking differential; Turf Mode, 2WD, 4WD, full diff-lock 4WD   |
| <b>Engine</b>              |  |
| Engine                     | 4-stroke, DOHC, 4-valve  |
| Power                      | 125hp  |
| Cooling                    | Liquid   |
| Displacement               | 999 cc   |
| Bore x Stroke              | 3.7 x 2.9 in. (93.0 x 73.5 mm)   |
| Compression Ratio          | 11.2:1   |
| Fuel System                | Yamaha Fuel Injection (YFI); dual 48 mm throttle bodies  |
| Fuel Capacity              | 9.2 gal.   |
| <b>Operational</b>         |  |
| Front Suspension           | Independent double wishbone with anti-sway bar, FOX® iQS piggyback shocks; 14.2 in. travel   |
| Rear Suspension            | Independent double wishbone with anti-sway bar, FOX® iQS piggyback shocks; 16.9 in. travel   |