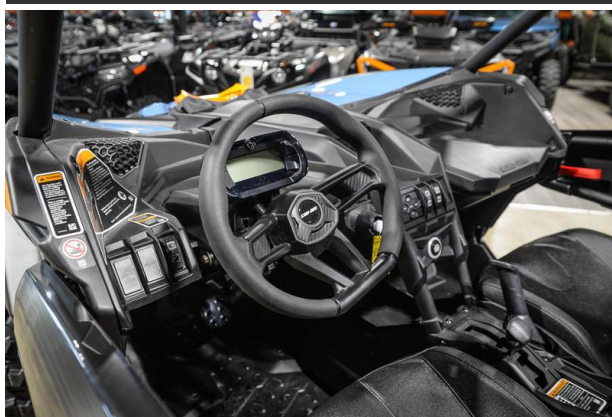
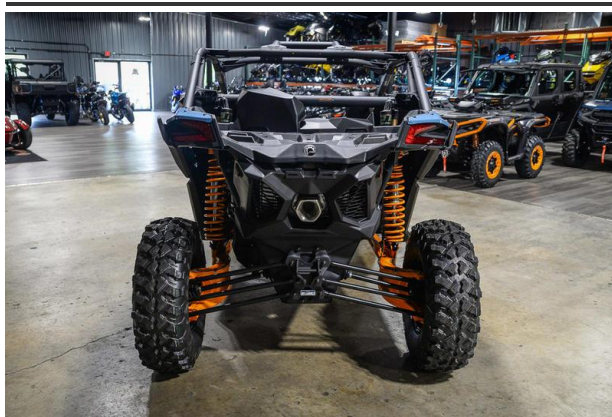


2025 Can-Am Maverick X3 DS Turbo Scandi Blue & Orange Crush
Price in Kaliningrad is 2 000 000P



• Condition	New
• Year	2025
• Make	Can-Am
• Model	Maverick X3 DS Turbo Scandi Blue & Orange Crush
• Category	Utility Vehicle
• VIN	3JBVGAY42SE001839
• Color	Blue/Orange
Manufacturer Info	
• Engine	
• Engine Type	TURBO Rotax ACE (Advanced Combustion Efficiency) 900 cc Turbocharged Triple-cylinder engine
• Engine Power	135 hp
• Cooling System	liquid cooled and high-performance air filter
• Displacement	900 cc
• Fuel System	Intelligent Throttle Control (iTCTM) with Electronic Fuel Injection (EFI)
• Drivetrain	
• Drivetrain	Lockable front differential with exclusive Smart-Lok* True 2WD/4WD with front diff. lock / 4WD TRAIL ACTIV / 4WD TRAIL
• Transmission	Drive primary and Quick Response System X (QRS-X) CVT with high airflow, L / H / N / R / P
• Steering	Power: High torque Tri-Mode Dynamic Power Steering (DPS™)
• Suspension	
• Front Suspension	Double A-arm with sway bar
• Front Travel (in./cm.)	20 in. (50.8 cm)
• Front Shocks	SHOWA HPG piggyback 2.5 (dual-speed Compression, Dual-rate spring)
• Rear Suspension	4-link Torsional Trailing-arm X (TTX) with sway bar
• Rear Travel (in./cm.)	20 in. (50.8 cm)
• Rear Shocks	SHOWA HPG piggyback 2.5 (dual-speed Compression, Dual-rate spring)
• Brakes	
• Front braking system	Dual 262 mm disc brakes with hydraulic twin-piston calipers
• Rear braking system	Dual 248 mm disc brakes with hydraulic twin-piston calipers
• Wheels & Tires	
• Wheels	14 in. cast-aluminum
• Front Tire	XPS Trac Force 30 x 10 x 14 in.
• Rear Tire	XPS Trac Force 30 x 10 x 14 in.
• Dimensions	
• Overall Vehicle Size	132 x 64 x 65.4 in. (335.3 x 162.5 x 166.1 cm)
• Wheelbase	102 in. (259.1 cm)

- Ground Clearance 14 in. (35.6 cm)
- **Capacities**
- Storage Capacity Total: 2.5 gal (9.4 L)
- Rack capacity, total 200 lb (91 kg) with LinQ™ quick-attach
- Fuel Capacity 10.5 gal (40 L)
- **Weights**
- Estimated Dry Weight 1,546 lb (701.3 kg)
- **Features**
- Instrumentation DC outlet (10-A)
- Features Anti-Theft System: RF Digitally Encoded Security System (D.E.S.S.™) with Start/Stop button
- Cage Type Dual-phase 980 steel
- Protection Plan Integrated front bumper, Quarter-doors, HMWPE full skid plate, Rear tow hook
- Magneto 650-W
- Gauges 4.5 in. digital display with keypad
- **Lights and Safety**
- Lighting LED headlight, LED tail lights